

# ANPR LUMO

---

## Update guide

2020-05-29 | v1.03

# Contents

1	Update info.....	3
1.1	System password.....	3
1.2	Update with discovery tool.....	4

# 1 Update info

This document will describe the update procedure to update an ANPR Lumo camera to the latest version.

A typical update takes around 10 to 15 minutes, during this time the ANPR Lumo will not read number plates, and all features including the web interface will not work.

## Important note

Currently an update will overwrite all settings made in the camera, and the “old” settings can be restored from an backup.

Make sure you have documented all settings, like the configured actions, regions of interest and other settings. After the update you will need to reconfigure the camera, only the IP settings are not overwritten.

## 1.1 System password

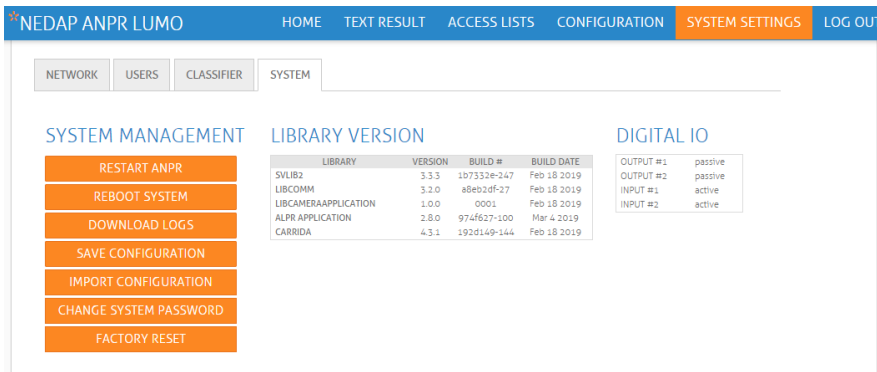
To update an ANPR Lumo camera, you will need the system password, this is the password for the “root” user, which is required to update the camera. The default “root” password is “#vc\_root”

To setup the “root” password you need to login into the web application of the camera with the “admin” user. In the menu “SYSTEM SETTINGS” -> “SYSTEM” -> “CHANGE SYSTEM PASSWORD” you can change the “root” password.

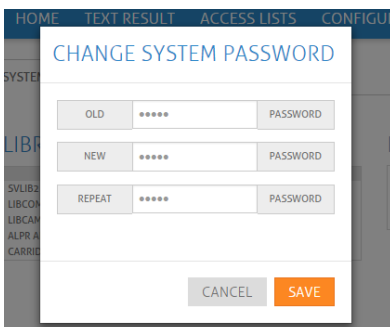
## Important note

Store the new root password in a safe location! If the password is lost it cannot be reset and will have to be returned for repairs.

In the figure below the orange button “CHANGE SYSTEM PASSWORD” is presented, when pressing this button a new screen will appear.



In the figure below the “change system password” is shown, here you just need to type in the new password you want to use. Make sure you store this password in a save location, when the password is lost it cannot be recovered.



## 1.2 Update with discovery tool

Make sure the camera is accessible through the network. The update will use port 22.

Start the ANPR Discovery tool and search for camera's. If you cannot find the camera, you can add this manually with use of the + button.

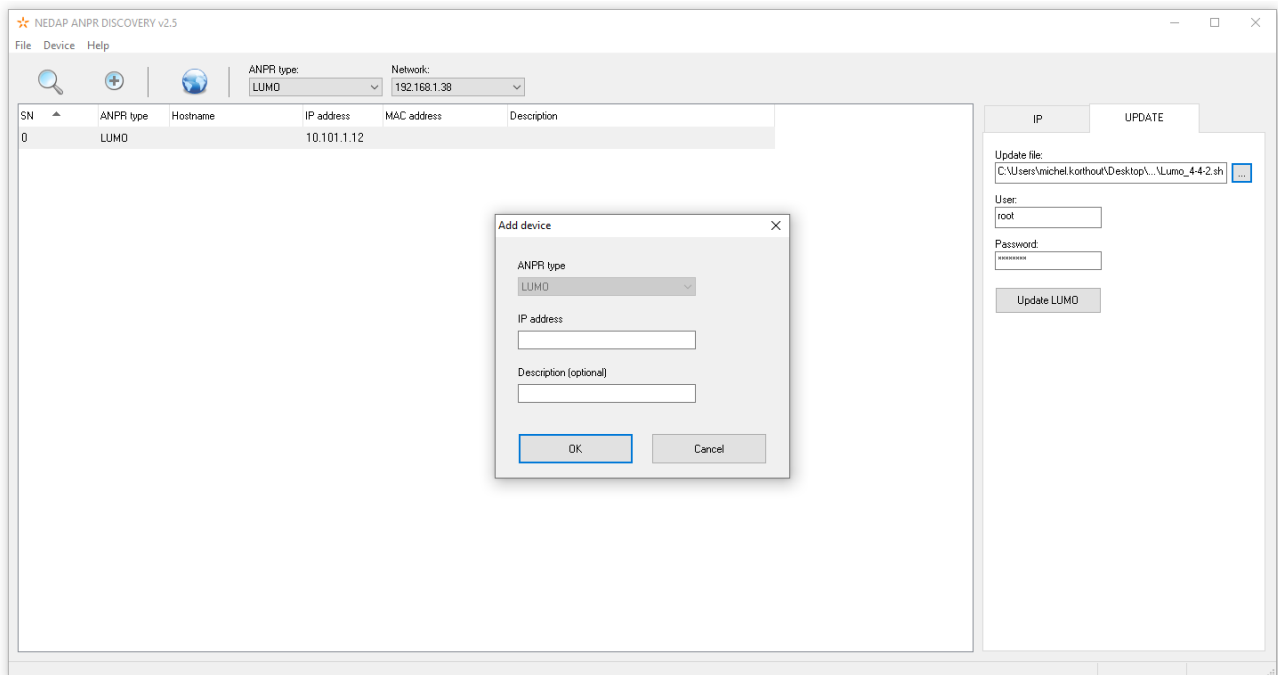
Select the camera you want to update, and select the "UPDATE" tab on the right menu.

Select the sh file you want to use for the update, the sh file is in the zip file located on the partner portal.

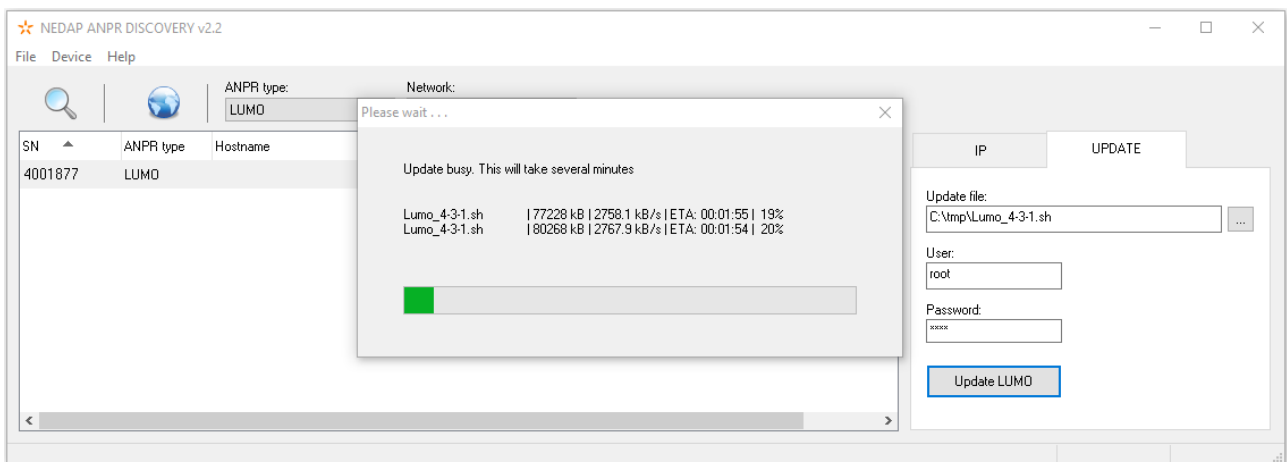
Type in the password which is configured in the previous menu.

Then press the "Update LUMO" button.

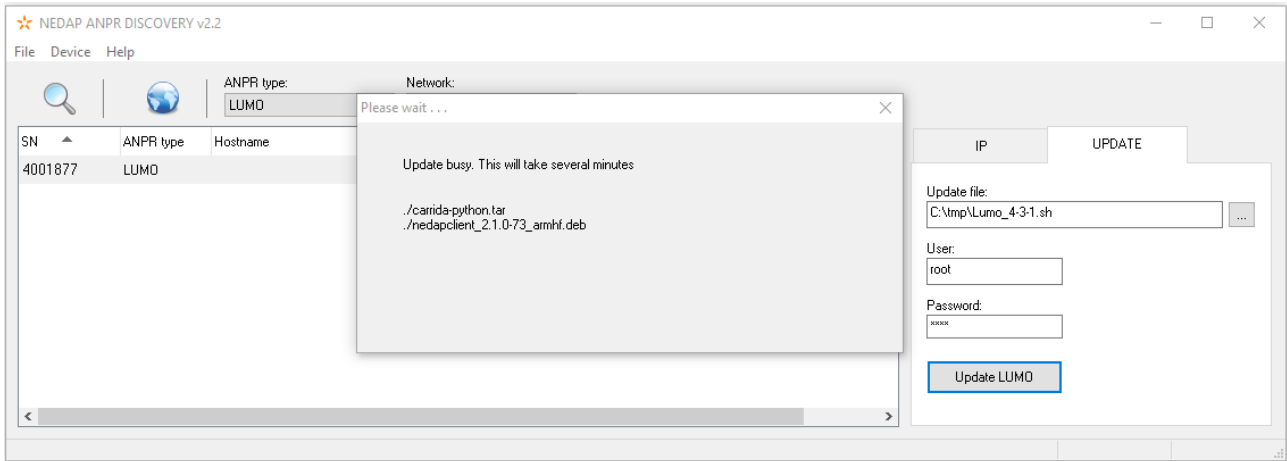
In the figure below an example of the ANPR Discovery is shown, including the screen to manually add a camera and the "UPDATE" tab



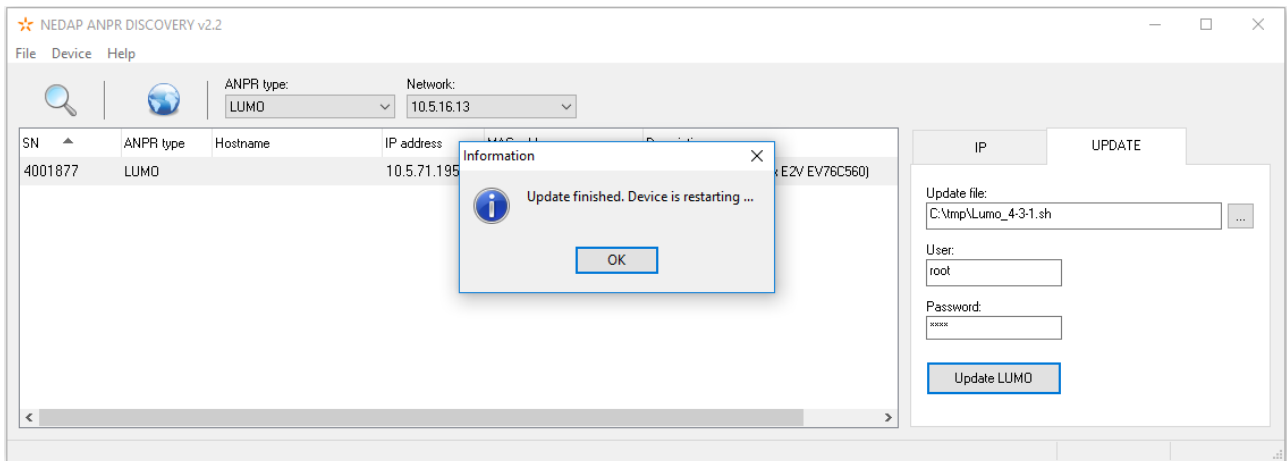
In the figure below the progress of uploading the sh file to the camera is shown



In the figure below the actual installation of the software is shown.



In the figure below the update is done, now the web interface should be available again.



**Note**

Make sure your browser is refreshed properly, and that the browser cache is refreshed as well. Otherwise some menu items will not work properly.

## A Disclaimer

This information is furnished for guidance, and with no guarantee as to its accuracy or completeness; its publication conveys no license under any patent or other right, nor does the publisher assume liability for any consequence of its use; specifications and availability of goods mentioned in it are subject to change without notice; it is not to be reproduced in any way, in whole or in part, without the written consent of the publisher.

## B Document revision

Version	Date	Comment
1.03	2020-05-29	Added feature to manually add camera
1.01	2019-04-01	Added update through Discovery tool
1.00	2019-03-21	Created