

MAXPRO® NVR Software

Network Video Recording Solution

Honeywell's MAXPRO NVR Software is a flexible, scalable and open IP video surveillance system. Supporting Honeywell's high definition (HD) cameras and broad integration with third party IP cameras and encoders, the MAXPRO NVR family is a powerful HD IP recording and security monitoring system for a variety of applications. MAXPRO NVR Software ensures flexibility for end user IT departments when choosing NVR hardware in deploying a recording solution, but end users will find it as easy as a DVR to configure and operate.

Open – Broad Device Integrations

- Integrates to full line of Honeywell IP cameras and HVE encoders
- Support for ONVIF Profile S, PSIA, real time streaming protocol (RTSP) standards
- Native device integrations supporting equip® Series cameras' new features: 4K resolution, H.265 video compression codec, 3D PTZ control, 360° camera and multi-imager camera support, and intelligence events

Easy to Install and Use

- All required software applications and a license for 4, 8, 16, 32, 48 or 64 channels included with no extra channel license costs
- Minimum hardware and operating system specifications for different levels of recording and monitoring performance and Virtualization specification are provided for IT departments to choose the appropriate hardware, operating system and virtual platform as needed
- Easy 3-Click* wizard to live video for auto configuration - quick and efficient IP system install
- Simple and logical configuration pages make setup a breeze even for the novice installer
- Supports simultaneous recording, live monitoring, search and system management for up to 64 IP cameras including high definition formats with easy to use clients
- Easy to use desktop clients, web client and mobile apps
- Intelligence events from cameras can be viewed at the alarm panel, and trigger recording on MAXPRO NVRs for further investigation
- Learn One, Know them All - Common feature-rich user experience across the MAXPRO NVR Family and MAXPRO VMS / Viewer provides familiarity across a broad range of Honeywell products saving training costs

*With default settings and in a local area network for specific models



Scalable Integrated Security Solution

- Multiple MAXPRO NVRs deployed for system expansion using a distributed architecture and integrated with the MAXPRO Viewer multi-site software or MAXPRO VMS enterprise video management system
- Integration with Honeywell WIN-PAK® and Pro-Watch® Access Control Systems providing an integrated Access Control, Intrusion and Video solution

MARKET OPPORTUNITIES

The continual growth of IP networks and the demand for HD video offered by IP cameras have led to the need for convergence of building security systems and IT systems for many companies across the globe. This has resulted in a strong demand for open video recording solution software. MAXPRO NVR Software provides flexible and scalable operational power to address the needs of a wide variety of applications. When the need is for an easy to install, simple to use, and feature rich open network video recorder, the solution is MAXPRO NVR Software.

MAXPRO® NVR Software

Network Video Recording Solution

FEATURES

Multi-Platform Support

- Allows local or remote operations including live and recorded video monitoring, configuration and system management in a single desktop client interface.
 - Support for Web Client on Windows PC (Internet Explorer, Chrome and Firefox browsers) and Mac (Safari browser). Supports live, playback/search of recorded video for up to 4K resolution on all cameras, taking snapshots and viewing presets for PTZ cameras.
 - Support for mobile monitoring clients on iOS and Android Phones and Tablets with MAXPRO NVR apps: Login securely with https communication, Create favorite salvos (cameras up to 3x3 on tablets and 2x4 on phones per salvo), View Live and Recorded Video, Perform PTZ control through Presets and Monitor & Manage Alarms, Support Touch ID on iOS devices for fast and secure login.
- *H.265 is not currently supported on Web client and mobile Apps.

Enhanced Monitoring with Desktop Clients

- Multi-zoom views on HD video and support for Profile cameras to create virtual cameras by digitally zooming into the field of view. Example: Zoom in on a cash register in one view of the HD camera while at the same time monitoring the cash operator in the zoom out view of the HD camera.
- Ability to investigate events and alarms by simultaneously viewing alarm videos at various stages. For every alarm, users can view the video captured during pre-alarm, on-alarm, and post-alarm, and also view live video from the camera which triggered the alarm.
- Enriched video viewing experience through the intuitive video rendering engine that optimizes CPU utilization by altering the video frame rate.
- Cost-effective enhanced H.264 and H.265 HD video rendering on remote desktop clients with support for monitoring of up to 23 1080p HD cameras in real time (30 fps)/690 fps 1080p HD with no-time lapse using the GPU capabilities of in-built processor graphics with 6th generation Intel® Core™ Processors for client systems. Up to 4 1080p HD @ 30 fps/120 fps on local client.
- Video Surround feature simplifies the process of tracking subjects through a set of surrounding cameras.
- Create, save and name salvos under My Salvos or Shared Salvos. Support for aspect ratio - 16:9, 4:3 and Stretched for video salvos.
- Support for 3D Positioning to allow the operator to pan, tilt and zoom into a specific region of interest efficiently by just clicking the live view window.
- IP PTZ control and digital zoom on fixed cameras. 360° viewing experience and 180° stitched view of eIQP multi-imager cameras providing heightened situational awareness and increased video surveillance coverage.
- Support for auto switching of streams utilized by the client with multi-stream cameras, saving workstation hardware cost by displaying more cameras simultaneously with lower resolution streams instead of the primary HD streams.

- Support for On-Demand Live Streaming to save connectivity costs by stopping camera streaming to the NVR when no NVR clients request live viewing.
- Options for optimized streaming under low bandwidth without interrupting critical business data transfers in the same network.

React Fast and Protect your Assets

- Fast search by date/time, enhanced time line, time jump, bookmarks, SMART Motion search, calendar, preview, film strip view and events. Increase productivity with more efficient search/investigation: Get to the relevant video in few clicks without having to review hours of recordings.
- SMART Motion search – Fast and efficient forensic search and investigation for objects/motion on recorded video using Honeywell SMART motion detection Analytics algorithms on the Client PC without impacting the NVR Server load.
- Capture and export clips and still images in simple .wmv, .asf, .mpvc and .bmp formats. Clips (.wmv) signed with digital signature for authentication.
- MAXPRO Video Container (.mpvc) format support - only playable in MAXPRO desktop clients and standalone Clip Player, quicker exports of raw video and support for estimating clip size and split to multiple clips to ensure clip storage media matches, include clip player with exported clip for easier review of video evidence and efficient investigation.
- Clip Player – Portable standard secure player for archived and exported clips (*.mpvc), 360 camera de-warping and 2x2 Salvo support, Smooth playback support with up to 256x review speed, No software installation required to run on a Windows PC, option to include with clip export.
- Email notification on camera, system and operator events.

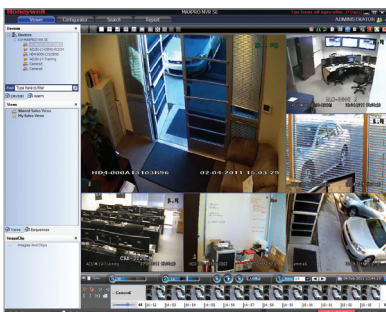
Enhanced Recording Engine

- Separate event video, continuous recording and archived video retention times.
- Flexible Motion detection (VMD) options with Server (SMART VMD) or Camera based motion events support. Reduced false alarms with object based motion detection analytics with SMART VMD.
- Video Archival – Archive large amounts of recorded Video data for long term storage either scheduled or manually, review through NVR desktop client or standalone Clip Player.
- Multi-stream support – Support multiple streams from camera for varying resolutions and frame rates for live, recording, low bandwidth desktop clients, web clients and mobile apps.
- Single channel license* for Encoders and Multi-imager 360 cameras (* - Max system capacity of 64 channels).
- Support for scheduled backfilling of the recordings from the edge storage of eIQP 1080p IR PTZ, 1080p WDR and 4 MP WDR cameras to the NVR using ONVIF Profile G for robust recording against temporary network failure.
- 1+1/N+M recorder failover and fallback automatically or manually with MAXPRO VMS.

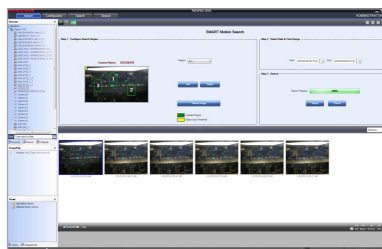
More Great Software Features

- Easy to use and enhanced camera configuration and discovery workflow– Reduce over configuration using NVR System.
- Load and Storage Calculator and ensure the system is configured to meet requirements for retention and reliability.
- Status Monitor – Save operational costs with an integrated Dashboard to easily monitor the health and recording status of all the MAXPRO NVRs from any workstation or PC in the network.
- Role-based operator privileges supporting Windows and local users.
- Advanced security features with encryption support for communication between desktop client to NVR and secure https login for Web Client and Mobile apps.
- Keyboard control with UltraKey Plus and UltraKey Lite over Ethernet.
- Event history and operator log reporting with export to PDF, Crystal Reports, Excel or Word.
- Local and multi-language support.
- Support for secured communication between MAXPRO NVR and VMS, server and client.

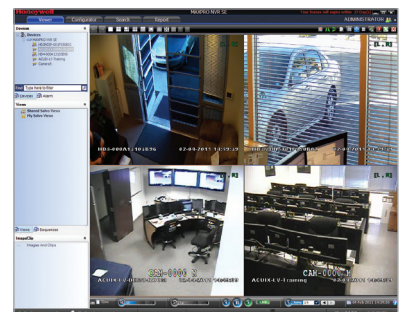
6 Split



SMART Motion Search



Quad

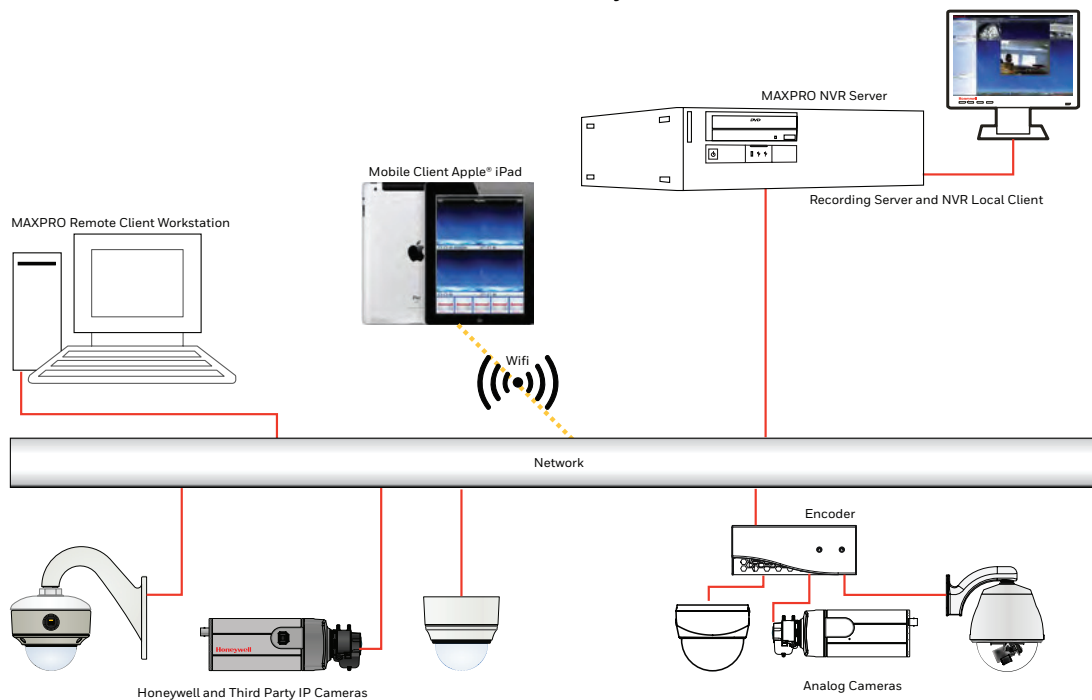


MAXPRO® NVR Software

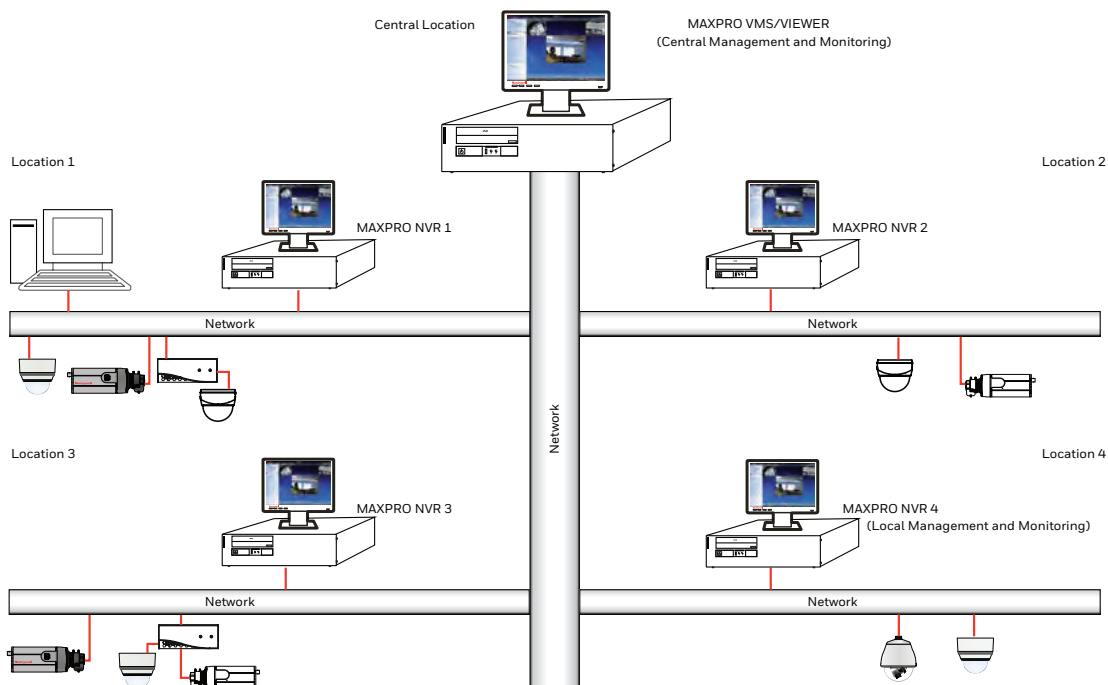
Network Video Recording Solution

SYSTEM DIAGRAM

MAXPRO NVR Standalone NVR System



MAXPRO NVR Multiple NVRs – Distributed Architecture



MAXPRO® NVR Software

Network Video Recording Solution

MINIMUM HARDWARE SPECIFICATIONS

MAXPRO NVR SERVER – VERSION 4.5 OR ABOVE UP TO 8 OR 16 CHANNELS	
PROCESSOR	Intel® Core™ i5-4460, 3.2 GHz or higher
SYSTEM MEMORY (RAM)	Minimum 8 GB or higher
OS & APPLICATION – HARD DISK DRIVE OR PARTITION	Minimum 100 GB Partition drive or separate hard drive
GRAPHICS ADAPTER	Minimum In-built Processor Graphics (GPU):Intel® HD Graphics 530, 4600, or equivalent for local client GPU rendering support
NETWORK INTERFACE	Minimum – 2 Gigabit network interface card
OPTICAL DRIVE	DVD-RW
VIDEO STORAGE DRIVE	Video rated or Enterprise drive, 7200 RPM SATA/SAS recommended
MONITOR RESOLUTION	Video resolution 1280x1024 pixels, 32 bit
KEYBOARD / MOUSE	102-key keyboard and mouse
OPERATING SYSTEM OPTIONS	Microsoft® Windows 7 Professional SP1, Windows 8.1, Windows 10, Windows 2008 Server R2 SP1, Windows Server 2012 R2 (64-bit OS versions recommended)
DATABASE	Microsoft® SQL Server® 2012 Express is automatically installed while installing MAXPRO NVR Server
SUPPORTED PERFORMANCE – 64-BIT WINDOWS OS	
RECORDING AND MONITORING PERFORMANCE	16 channels with 480 fps @ 4CIF/VGA or 480 fps @ 720p HD or 480 fps @ 1080p (4 Mbps bitrate) HD. 1-way audio for up to 8 or 16 IP channels. Network bandwidth/throughput supported per NVR with Incoming: 65 Mbps, Outgoing:180 Mbps providing a Total: 245 Mbps. Rendering performance using GPU of up to 4 1080p HD @ 30 fps / 120 fps on local client. Note: Oncam Grandeye 360 cameras are not supported with GPU rendering and use CPU rendering by default.
SERVER BASED VMD (SMART VMD) PERFORMANCE - CHANNELS SUPPORTED	All 8 or 16 channels supported at 480 fps @ 4CIF/VGA or 480 fps @ 720p HD or 480 fps @ 1080p HD or total 32 Megapixel.
MAX VIDEO STREAMS SUPPORT	Web Client: Live - 64 streams, Playback - 32 streams. Note: Live streams consumed are per camera being viewed live and duplicate live views of the same camera in multiple or same web client instance are allowed without consuming additional streams. Playback streams consumed are per playback stream being viewed and each playback stream being viewed consumes 1 additional stream. Desktop Client: Live - 256 streams, Playback/Video retrieval sessions - 32, Sync playback - 9 streams 256 live streams limit excludes 1 stream used per camera if SMART VMD is enabled. Maximum live streams per camera is 15 with SMART VMD enabled. Mobile App: 16 streams of 1080p HD @ 5 fps each. Note: During archival operations, maximum no of playback streams recommended from Desktop Client and Web Client is 16 streams.
ARCHIVAL PERFORMANCE	16 channels @ 4 Mbps bitrate each / 64 Mbps total archival throughput capacity. Outgoing archival storage throughput of 200 Mbps.
MULTI-STREAM PERFORMANCE	Support for maximum 128 streams. Support for configuring 1 preferred stream for continuous recording and 1 preferred stream for live video / motion based recording per camera.

MAXPRO NVR SERVER – VERSION 4.5 OR ABOVE UP TO 32, 48 OR 64 CHANNELS	
PROCESSOR	Intel® Core™ i7-4790, 3.6 GHz or higher
SYSTEM MEMORY (RAM)	Minimum 8 GB or higher
OS & APPLICATION – HARD DISK DRIVE OR PARTITION	Minimum 100 GB Partition drive or separate hard drive
GRAPHICS ADAPTER	Minimum In-built Processor Graphics (GPU):Intel® HD Graphics 530, 4600, or equivalent for local client GPU rendering support
NETWORK INTERFACE	Minimum – 2 Gigabit network interface card
OPTICAL DRIVE	DVD-RW
VIDEO STORAGE DRIVE	Video rated or Enterprise drive, 7200 RPM SATA/SAS recommended
MONITOR RESOLUTION	Video resolution 1280x1024 pixels, 32 bit
KEYBOARD/MOUSE	102-key keyboard and mouse
OPERATING SYSTEM OPTIONS	Microsoft® Windows 7 Professional SP1, Windows 8.1, Windows 10, Windows 2008 Server R2 SP1, Windows Server 2012 R2 (64-bit OS versions recommended)
DATABASE	Microsoft® SQL Server® 2012 Express is automatically installed while installing MAXPRO NVR Server
SUPPORTED PERFORMANCE – 64-BIT WINDOWS OS	
RECORDING AND MONITORING PERFORMANCE	RAID/JBOD Video Storage with 6 GB/s SAS/SATA RAID Card: 64 channels with 1920 fps @ 4CIF/VGA or 1920 fps @ 720p HD or 1920 fps @ 1080p (4 Mbps bitrate) HD. 1-way audio for up to 32, 48 or 64 IP channels. Network bandwidth/throughput - Incoming: 256 Mbps, Outgoing: 425 Mbps, Total: 681 Mbps JBOD Video Storage with onboard SATA controller: 64 channels with 1920 fps @ 4CIF/VGA or 1920 fps @ 720p HD or 1280 fps @ 1080p (4 Mbps bitrate) HD. 1-way audio for up to 32, 48 or 64 IP channels. Network bandwidth/throughput - Incoming: 160 Mbps, Outgoing: 350 Mbps, Total: 510 Mbps Rendering performance using GPU of up to 4 1080p HD @ 20 fps / 80 fps on local client. Note: Oncam Grandeye 360 cameras are not supported with GPU rendering and use CPU rendering by default.
SERVER BASED VMD (SMART VMD) PERFORMANCE - CHANNELS SUPPORTED	RAID/JBOD Video Storage with 6 GB/s SAS/SATA RAID Card: Channels at max fps-64 ch at 1920 fps @ 4CIF/VGA or 64 ch at 1920fps @ 720p or 64 ch at 1920fps @ 1080p or total 128 Megapixel. All Channels at fps-64 ch at 1920 fps @ 4CIF/VGA or 1920 fps @ 720p or 1920 fps @ 1080p or total 128 Megapixel. JBOD Video Storage with onboard SATA controller: Channels at max fps-64 ch at 1920 fps @ 4CIF/VGA or 64 ch at 1920 fps @ 720p or 50 ch at 1280 fps @ 1080p or total 100 Megapixel. All Channels at fps: 64 ch at 1920 fps @ 4CIF/VGA or 1920 fps @ 720p or 640 fps @ 1080p or total 128 Megapixel.
MAX VIDEO STREAMS SUPPORT	Web Client: Live – 64 streams, Playback - 32 streams. Note: Live streams consumed are per camera being viewed live and duplicate live views of the same camera in multiple or same web client instance are allowed without consuming additional streams. Playback streams consumed are per playback stream being viewed and each playback stream being viewed consumes 1 additional stream. Desktop Client: Live - 256 streams, Playback/Video retrieval sessions - 32, Sync playback - 9 streams. 256 live streams limit excludes 1 stream used per camera if SMART VMD is enabled. Maximum live streams per camera is 15 with SMART VMD enabled. Mobile App: 16 streams of 1080p HD @ 5 fps each. Note: During archival operations, maximum no of playback streams recommended from Desktop Client and Web Client is 16 streams.
ARCHIVAL PERFORMANCE	RAID/JBOD Video Storage with 6 GB/s SAS/SATA RAID Card: 25 channels @ 4 Mbps bitrate each / 100 Mbps total archival throughput capacity. Outgoing archival storage throughput of 275 Mbps. JBOD Video Storage with onboard SATA controller: 16 channels @ 4 Mbps bitrate each / 64 Mbps total archival throughput capacity. Outgoing archival storage throughput of 200 Mbps.
MULTI-STREAM PERFORMANCE	Support for maximum 128 streams. Support for configuring 1 preferred stream for continuous recording and 1 preferred stream for live video / motion based recording per camera.

NOTE:

- MAXPRO NVR Server specifications support 1 local monitoring client. Refer to Storage Calculator for the Video Storage size required based on recording schedule.
- Virtual Environment (NVR Server only) Support: NVR Server software is VMware ESXi v4.0 or above compliant. Refer to the MAXPRO NVR Server VMware ESXi Specifications document for details on the minimum specifications and performance supported.

MAXPRO® NVR Software

Network Video Recording Solution

SPECIFICATIONS

MAXPRO NVR Desktop Client Only Workstation—Specifications			
PERFORMANCE CONFIGURATION	With GPU Rendering Capability*		Without GPU Rendering Capability
	Minimum	Recommended	Recommended
	Up to 13 1080p HD Cameras, 1 Monitor (390fps @1080p HD)	Up to 23 1080p HD cameras, 2 Monitors (690fps @1080p HD)	Up to 9 HD Cameras (1 selected panel only, Throttle Frame Rate setting enabled)
PROCESSOR	Intel® Core™ i5-4460 or equivalent 4th generation Intel® Core™ Processors for client systems	Intel® Core™ i7-6700 or equivalent 6th generation Intel® Core™ Processors for client systems	Intel® Core™ 2 Duo Processor E6750 2.66 GHz or Quad Core Intel® Xeon® E5405 2.0 GHz
GRAPHICS ADAPTER	In-built Processor Graphics (GPU):Intel® HD Graphics 530, 4600, or equivalent		512 MB or higher Display Card (Optional)
SYSTEM MEMORY (RAM)	8 GB		4 GB
OS & APPLICATION – HARD DISK DRIVE OR PARTITION	Minimum 100 GB Partition drive or separate hard drive		
NETWORK INTERFACE	Minimum – 1 Gigabit network interface card		
OPERATING SYSTEM	Microsoft® Windows 7 Professional SP1, Windows 8.1, Windows 10 (64bit)		Microsoft® Windows 7 Professional SP1, Windows 8.1, Windows 10 (64bit/32bit)
OPTICAL DRIVE	DVD-RW		
MONITOR RESOLUTION	Video resolution 1280x1024 pixels, 32 bit		
KEYBOARD/MOUSE	102-key keyboard and mouse		

NOTE: The performance specifications above are recommended for systems with fixed or PTZ cameras only. Oncam Grandeye 360 cameras are not supported with GPU rendering and use CPU rendering by default. On Windows 7 workstations, GPU rendering is only supported through the motherboard monitor outputs and any additional graphics cards should be disabled in BIOS. On Windows 8.1, Windows 10 workstations with Intel GPU and any additional graphics cards, at least one monitor should be connected to the motherboard monitor output.

* - H.265 cameras are supported with GPU rendering only with v4.5 or newer version.

SOFTWARE SPECIFICATIONS

Operational – MAXPRO NVR Software	
IMAGE COMPRESSIONS SUPPORTED	MJPEG, MPEG-4, H.264, H.265
SUPPORTED HONEYWELL IP CAMERAS & ENCODERS	Supports Honeywell's Performance IP, equip® Series cameras. Refer to www.security.honeywell.com/hota/compatibility/index.html
SUPPORTED THIRD PARTY IP CAMERAS & ENCODERS	Refer to the MAXPRO® NVR Compatibility for a comprehensive list of compatible products to which this device is integrated. www.security.honeywell.com/hota/compatibility/index.html
AUDIO SUPPORT	1-way audio for specific IP camera models. Refer to www.security.honeywell.com/hota/compatibility/index.html
MAXIMUM NUMBER OF DESKTOP CLIENT CONNECTIONS	Desktop Client - 18 remote per server from 9 remote workstations + 1 local on NVR server.
SALVO LAYOUTS	Desktop Client - Full, 2x2, 1x5, 3x3, 2x8, 1x12, 4x4. Web Client - 2x2, 1x1, 1x2, 1x3. Mobile app (Phone) - 2x2, 2x4, 1x2, 1x1. Mobile app (Tablet) - 3x3, 2x2, 1x1.
PICTURE CONTROLS PER CAMERA	Sharpness, blur, brightness, contrast, hue, saturation, maintain aspect ratio, stretched, original size and picture mirror
OSD	Concealed text option
PLAYBACK CONTROLS PER CAMERA - DESKTOP CLIENT	FWD/REV Play x (1, 2, 4, 8, 16) Slow FWD/REV Play x (1/2, 1/4, 1/8)
SEARCH TYPES	Time/date timeline, time jump FWD/REV, bookmarks, calendar preview, film strip, event search and SMART Motion Search
RECORDING SCHEDULE	Constant and event based with H/M/D and holiday and exception days
RECORDING METHODS PER CAMERA	Constant, event-based and user activated
LIVE SETTINGS PER CAMERA	Compression format, resolution and frame rate
RECORDING SETTINGS PER CAMERA	Same as live or reduced frame rate
CLIP FORMAT	Honeywell MPVC playable with standalone MAXPRO Clip Player for faster and secure exports. WMV with digital certificate for authentication playable with Windows media player. ASF for faster exporting of longer than an hour backup clips in native compression format.
VIDEO CLIP AUTHENTICATION	Digital signature, verification tool provided
MOTION DETECTION LOCATION	Camera based for supported models or Server based (Smart VMD) for all models (except 360 fisheye/panomorph views)
EVENT RECORDING	Pre- and post-duration setting
OPERATOR REPORTING	Per user, configurator, session and viewer
EVENT REPORT	Per camera or recorder events
OPERATORS	1024

MAXPRO® NVR Software

Network Video Recording Solution

ORDERING

MAXPRO NVR SOFTWARE	
MPNVRSW64	MAXPRO NVR Software – Base Software and License for 64 Channels
MPNVRSW48	MAXPRO NVR Software – Base Software and License for 48 Channels
MPNVRSW32	MAXPRO NVR Software – Base Software and License for 32 Channels
MPNVRSW16	MAXPRO NVR Software – Base Software and License for 16 Channels
MPNVRSW8	MAXPRO NVR Software – Base Software and License for 8 Channels
MPNVRSW4	MAXPRO NVR Software – Base Software and License for 4 Channels
MAXPRO NVR SOFTWARE – UPGRADE LICENSES	
MPNVRSW1UP	MAXPRO NVR Software – 1 Channel License Upgrade to add support for up to 64 Channels per NVR
MPNVRSW4UP	MAXPRO NVR Software – 4 Channel License Upgrade to add support for up to 64 Channels per NVR
MPNVRSW8UP	MAXPRO NVR Software – 8 Channel License Upgrade to add support for up to 64 Channels per NVR
MPNVRSW16UP	MAXPRO NVR Software – 16 Channel License Upgrade to add support for up to 64 Channels per NVR
MPNVRSW32UP	MAXPRO NVR Software – 32 Channel License Upgrade to add support for up to 64 Channels per NVR
SOFTWARE MAINTENANCE & UPGRADES AGREEMENTS FOR MAXPRO NVR SOFTWARE	
SMUMPNVR4	Annual Software Maintenance & Upgrades Agreement – MAXPRO NVR Software System, up to 4 Channels
SMUMPNVR8	Annual Software Maintenance & Upgrades Agreement – MAXPRO NVR Software System, up to 8 Channels
SMUMPNVR16	Annual Software Maintenance & Upgrades Agreement – MAXPRO NVR Software System, up to 16 Channels
SMUMPNVR32	Annual Software Maintenance & Upgrades Agreement – MAXPRO NVR Software System, up to 32 Channels
SMUMPNVR48	Annual Software Maintenance & Upgrades Agreement – MAXPRO NVR Software System, up to 48 Channels
SMUMPNVR64	Annual Software Maintenance & Upgrades Agreement – MAXPRO NVR Software System, up to 64 Channels
SMU24MPNVR4	Annual 24/7 Software Maintenance & Upgrades Agreement – MAXPRO NVR Software System, up to 4 Channels
SMU24MPNVR8	Annual 24/7 Software Maintenance & Upgrades Agreement – MAXPRO NVR Software System, up to 8 Channels
SMU24MPNVR16	Annual 24/7 Software Maintenance & Upgrades Agreement – MAXPRO NVR Software System, up to 16 Channels
SMU24MPNVR32	Annual 24/7 Software Maintenance & Upgrades Agreement – MAXPRO NVR Software System, up to 32 Channels
SMU24MPNVR48	Annual 24/7 Software Maintenance & Upgrades Agreement – MAXPRO NVR Software System, up to 48 Channels
SMU24MPNVR64	Annual 24/7 Software Maintenance & Upgrades Agreement – MAXPRO NVR Software System, up to 64 Channels

For more information

www.honeywell.com/security

Honeywell Security and Fire

2700 Blankenbaker Pkwy, Suite 150

Louisville, KY 40299

1.800.323.4576

www.honeywell.com

ONVIF and the ONVIF logo are trademarks of ONVIF Inc. Honeywell reserves the right, without notification, to make changes in product design or specifications.

L/MPNSW45D/D | 09/17
© 2017 Honeywell International Inc.

Honeywell