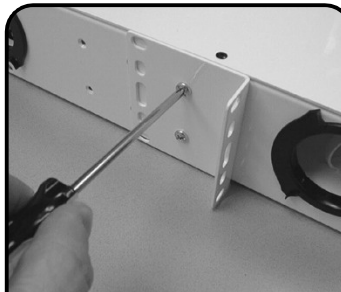
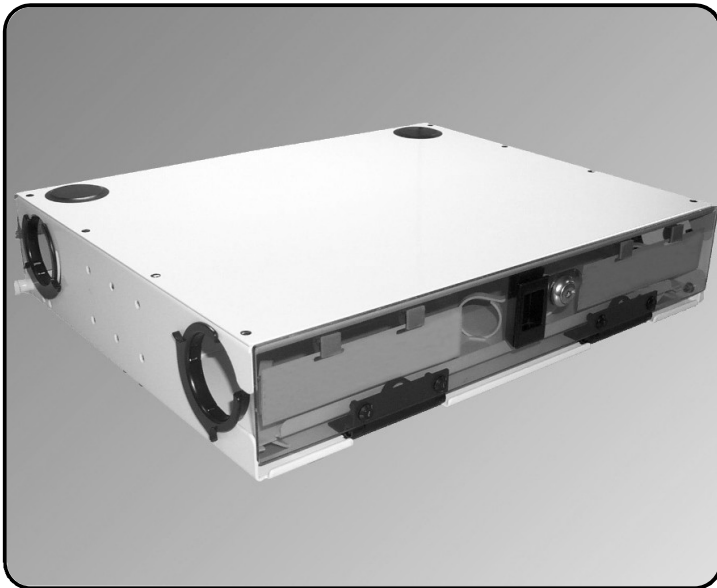
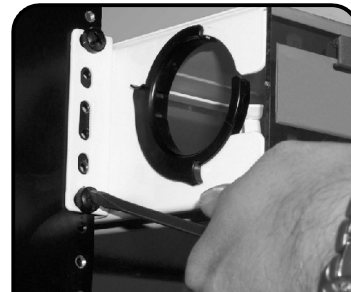


Rack Mount Interconnect Center (RIC) Instructions

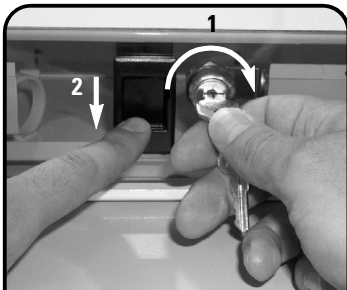


1 The RIC can mount to a 19" or 23" rack depending on the orientation of the mounting brackets. (19" position shown). Select the set of mounting holes based on front/rear clearance requirements and secure the mounting brackets to each side of the RIC using #10-32 self-tapping screws provided. (See mounting chart)

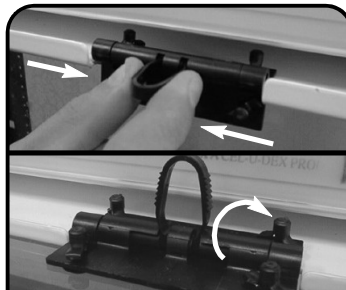


2 Position the RIC in the desired location on the rack and secure using the four (4) #12-24 screws and washers provided.

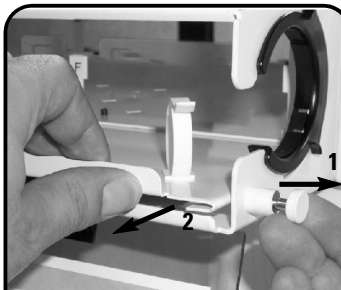
Note: #10-32 screws and washers may also be used (not provided).



3 Open the front door by disengaging the latch and the lock as shown.



4 If required, remove the door from the hinges by squeezing the securing latches inward until disengaged. To facilitate re-attachment of the door, while squeezing the latches inward, push the hinge lever up to the position shown below so the hinge pins remain recessed.



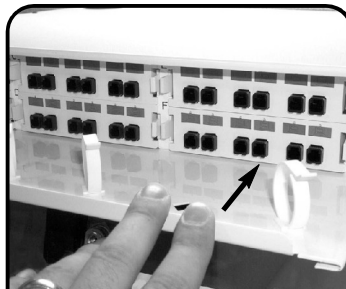
5 The tray may be pulled out of the enclosure by first disengaging the positioning pin located on the right side of the unit and then pulling the tray forward.



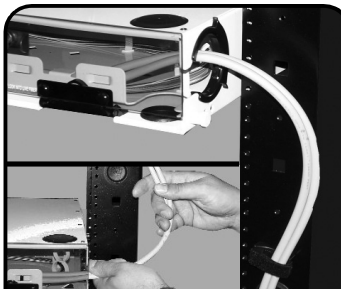
6 Align the adapter plate latches with the respective cut-outs in the adapter plate mounting bracket and push the adapter plate inward until it snaps into place.



7 For six-port adapter plates, insert color coded icons into fiber adapter plates for additional port identification. *Note: White icons, a sheet of pre-printed labels, and clear covers are also included. The white icons are for use when color coding is not required. The sheet of labels are pre-printed with the numbers 1-96 which can be used in conjunction with the clear covers to identify each port directly on the six-port adapter plates.*

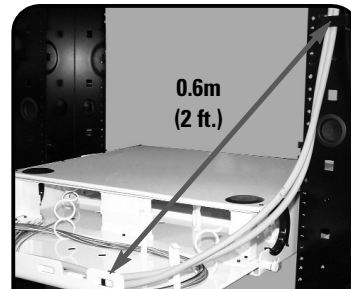


8 After inserting all the adapter plates, slide the mounting tray back into the enclosure.



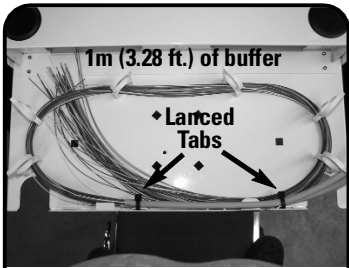
9 To utilize the sliding tray feature, a service loop must be present external to the enclosure. Secure the fiber optic cable to the rack rail approximately 0.3m (1 ft.) above or below the enclosure as shown.

Note: To allow for ease of cable placement it is recommended cables with a maximum of 24 fibers be used.

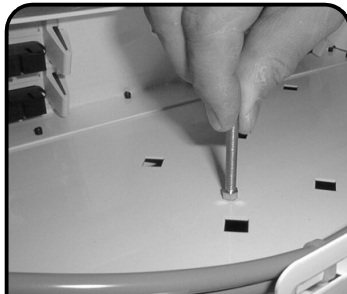


10 Open the rear door by disengaging the latch and the lock. Defeat the positioning pin on the right side of the enclosure and extend tray fully as shown. From fastening position on the rack to the securing point on the fiber tray, allow for 0.6m (2 ft.) of slack.

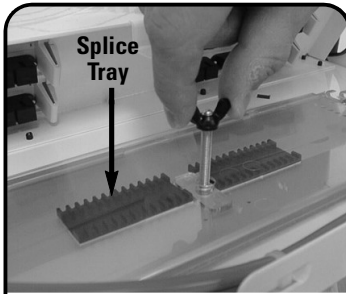
Rack Mount Interconnect Center (RIC) Instructions



11 Mark the cable at 0.8m (2.7 ft) from the securing position on rack. With the tray fully extended from the rear of the enclosure secure the cable to the back of the tray using the lance tabs. Strip 1m (3.28 ft.) of jacket to expose buffered fiber.

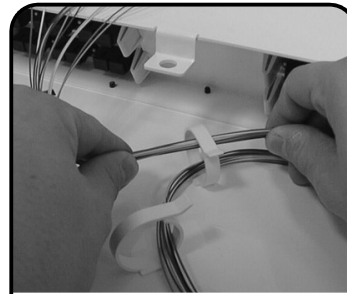


12 For optional splice tray screw the threaded stud (supplied) into the #10-32 insert near the center of the rear tray.



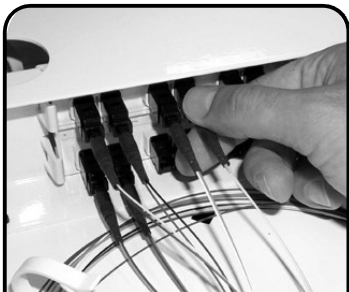
13 Install the splice tray over the threaded stud and secure to the base using the wing-nut provided.

Note: Splice trays may be stacked (2 maximum) to accommodate up to 48 splices.

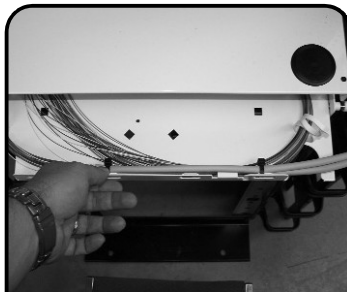


14 Terminate or splice fiber according to manufacturer's specifications. Lace fiber strands into fiber management clips as shown.

Note: If required, 1/4 turn fiber managers can be oriented in a different direction or relocated by rotating them 45 degrees.



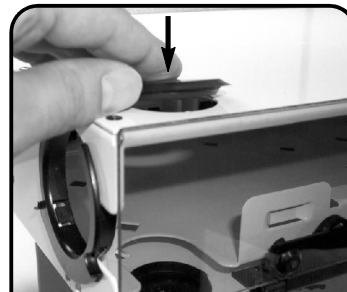
15 Insert terminated fiber connectors into the appropriate fiber adapters.



16 The tray can now be closed. As the tray is stowed in the enclosure the cable should be guided through the side grommets as shown below.

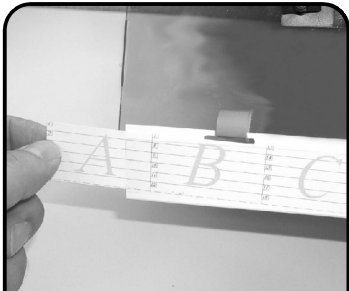


17 With the tray in the closed position the cable should gently loop as shown.

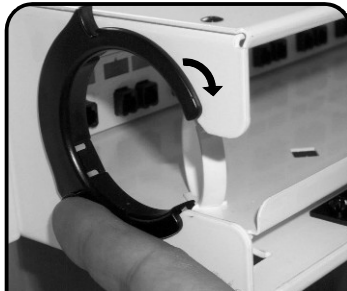


18 Push the four (4) hole plugs into place at the top and bottom of the cabinet. Close rear door, re-engage the latch and lock.

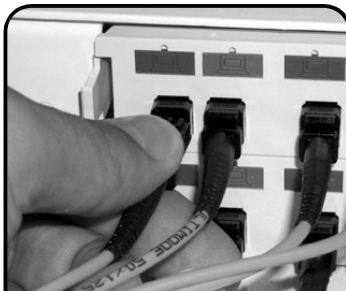
Note: The fiber access entry locations located on the top and bottom of the RIC can be used for routing multi-fiber cables into and between multiple RIC cabinets. When the bottom opening is used, rear tray sliding feature is negated.



19 Mark port IDs on the labels provided and insert labels into label holder located on the front door.

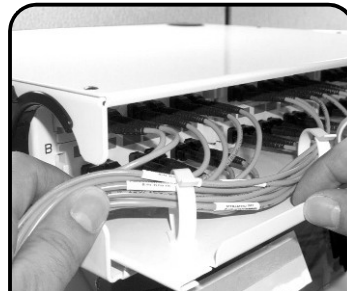


20 Rotate the side grommet(s) to the open position.



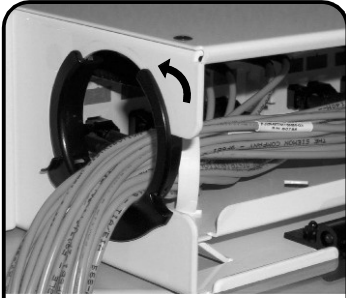
21 Connect fiber jumpers to front of adapter plates, install into appropriate fiber management clips, and route towards the side access hole(s).

Note: Due to the proximity of the access hole to the first column of adapters, jumpers connected to these adapters can be routed directly through the side access hole without being installed into a fiber management clip.

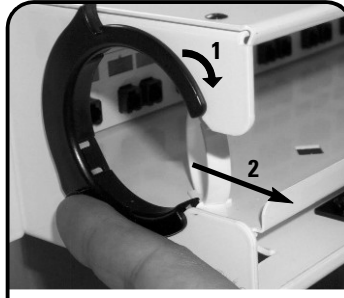


22 While holding cables near the exit point, slide tray back to the closed position while guiding the cables into the opened side grommet.

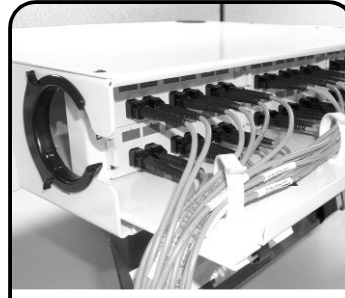
Rack Mount Interconnect Center (RIC) Instructions



22 Rotate side grommet(s) into the closed position.

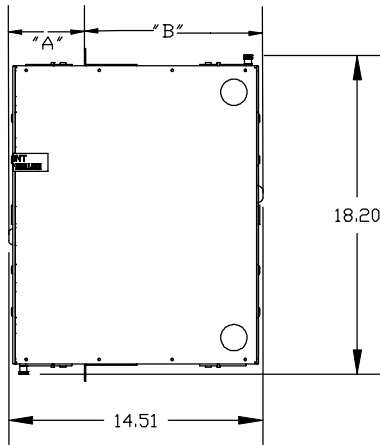


23 To slide fiber tray out the front of the RIC for easier access to connections, rotate side grommet(s) to the open position, then pull tray out.



24 Fiber tray can slide out the front of the RIC without disturbing existing connections.

RIC Dimensions



Mounting Bracket Position Options

"A" IN [MM]	"B" IN [MM]
4.32 [109.7]	10.19 [258.8]
5.82 [147.8]	8.69 [220.7]
7.32 [185.9]	7.15 [182.6]

(Rotate Brackets to fit 23" Rack option)

WARNING:

Optical transmitters and fiber optic test equipment used in the telecommunications industry uses invisible infrared energy. At sufficient power, this may cause eye or skin damage.

If you work with fiber optic products, including test equipment, consider the following:

1. Do not look into fibers or connectors. They may be 'live'.
2. Know what is happening with the fiber under test at the far end!
3. When connecting a light source, try to make it the last element you connect!
4. Whenever possible, switch off and disconnect your light source(s) before breaking any fiber connections.
5. Always consider the hazard to other people:
 - a. Use warning signs, etc.
 - b. Keep caps on unconnected fibers whenever possible.
 - c. If using "live" optical beams, keep them low and facing away from personnel.
6. Don't view optical outputs with a microscope, use a TV camera/monitor.
7. Elect a safety officer to:
 - a. Train staff
 - b. Maintain records of equipment classification, calibrations and safety checks.
8. Be careful of cut fibers. Remember they are sharp and difficult to see!

Global Headquarters
Watertown, Connecticut USA
Tel: (1) 866-548-5814

For a complete listing of our global offices visit our web site



www.siemon.com