

Mounts for Omnidirectional Antennas

Model	Description	Application	Qty per Assembly
MMK1	3-groove backing plate	For mounting a 1-5/16" outer diameter antenna to a 1-1/4" maximum outer diameter mast.	1
MMK1924	Stainless steel "L" bracket mount for wall or pipe mount	For mounting an omnidirectional antenna to a 2" maximum diameter mast. Bracket is 6" long with a 5/8" diameter hole for mounting the antenna.	1
MMK2	1-1/2" stainless steel "L" bracket	For mounting an antenna with a base connector to a 2" maximum diameter mast. Bracket is 9" long with a 5/8" diameter hole for mounting the antenna.	1
MMK3	Base station mount bracket	For mounting a 1-5/16" outer diameter antenna to a 1-1/4" maximum outer diameter mast.	2
MMK4	Heavy duty fiberglass base station mount	For mounting an antenna with 2-1/2" maximum diameter onto a 2-1/2" maximum outer diameter mast.	2
MMK8A	Aluminum MFB mount bracket	For mounting a 1-1/4" diameter antenna to a 2-1/2" maximum diameter mast.	1
MMK9	Aluminum MFB mount bracket	For mounting a 1-5/16" diameter antenna to a 2-1/2" maximum diameter mast.	1
MMK12	Heavy duty sand cast mount bracket	For mounting yagi or omnidirectional antenna up to 3.00" maximum diameter mast.	
BAM1005	Light duty parallel or perpendicular pipe to pipe clamp.	Mounts to legs, towers, accessories with 1.5 - 2.4" OD pipe.	1



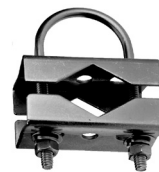
MMK1



MMK1924



MMK2



MMK3



MMK4



MMK8A



MMK9



MMK12



MMA1



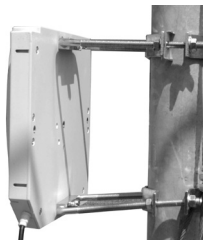
BAM1005

Mounts for Directional Antennas

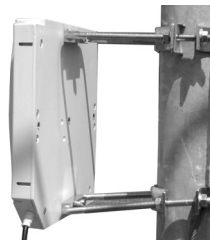
Model	Description	Application	Qty per Assembly
MBSWM	Wall mount	For wall mounting antennas of up to 2-1/4" in diameter.	1
MPAB7	Heavy duty outdoor adjustable mount with +/-35° up/tilt/down/tilt adjustment	Adjustable outdoor mounting bracket for MP XF 800/900 MHz directional panel antennas. One 6" and one 8" bracket.	2
MPAB8	Heavy duty outdoor adjustable mount with 17° up/tilt/down/tilt adjustment	Adjustable outdoor mounting bracket for MPXF 800/900 MHz directional panel antennas. Two 6" brackets.	2
MPAB8W	Heavy duty outdoor adjustable mount with 17° up/tilt	Downtilt adjustment / Adjustable outdoor mounting bracket for MPXF 800/900 MHz directional panel antennas. Two 6" galvanizing brackets.	1
MPAB14	Heavy duty outdoor cast aluminum adjustable hose clamp	Adjustable outdoor hose clamp for XF series panel antennas for mounting up to 1.6" maximum diameter	1
MYK1	Mount kit for 7/8" boom yagis	For mounting 7/8" diameter boom yagis to a 1-5/8" maximum diameter mast.	1
MYK2	Mount kit for 1-1/4" boom yagis	For mounting 1-1/4" diameter boom yagis to a 2" maximum diameter mast.	1
MYK3	Heavy duty mount for 7/8" boom yagis	For mounting 7/8" diameter boom yagis to a 2" maximum diameter mast.	1
MYK4	Mounting kit for bottom dipole fiberglass base station antennas	For mounting to a 2" maximum diameter mast.	1
MYK10	Heavy duty cast yagi bracket	For mounting a 7/8" OD yagi to a 2-1/2" maximum OD mast. Adjustable for vertical or horizontal polarization.	1
BWC1001	Yagi clamp	Fits mast OD of 0.5 - 0.84". Mounts to legs, towers, accessories with 1.25 - 2.4" OD	1
BWC1001A	Yagi clamp	Fits mast OD of 0.75 - 1". Mounts to legs, towers, accessories with 1.25 - 2.4" OD	1



MBSWM



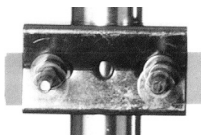
MPAB7



MPAB8



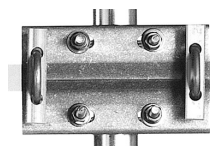
MPAB14



MYK1



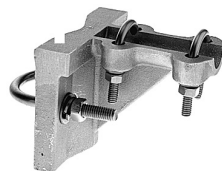
MYK2 (front)



MYK3



MYK4 (front)



MYK10



BWC1001(A)

