

4

3

2

1

NOTES: UNLESS OTHERWISE SPECIFIED

- 1. INTERPRET DRAWING PER ANSI/ASME Y14.5
- 2. PARTS SHALL BE CLEAN AND FREE OF FOREIGN MATTER.
- 3. ALL MATERIALS SHALL BE ROHS COMPLIANT.
- 4. DIMENSIONS IN PARENTHESIS ARE FOR REFERENCE ONLY AND NO TOLERANCE IS IMPLIED.

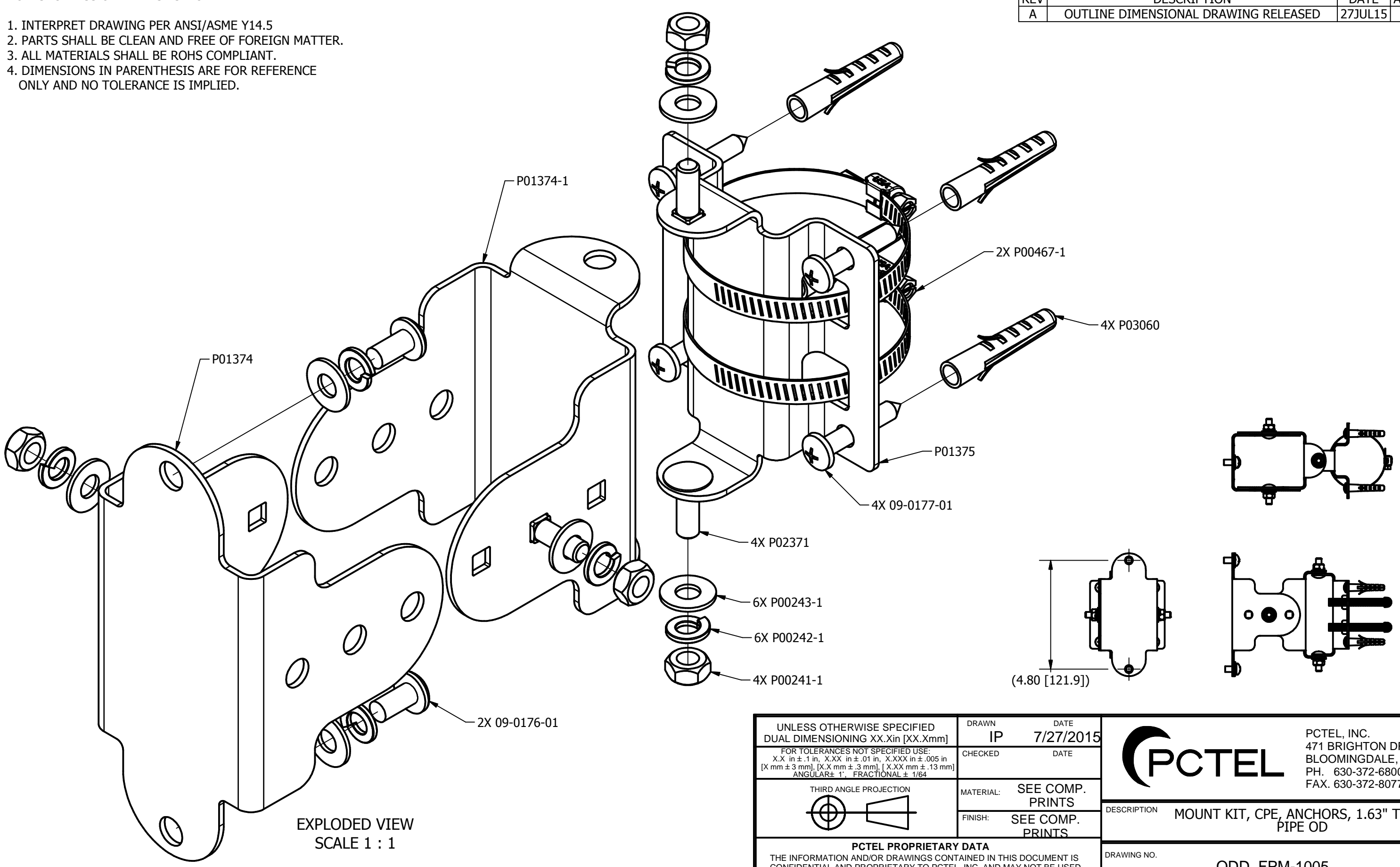
REVISION HISTORY			
REV	DESCRIPTION	DATE	APPROVED
A	OUTLINE DIMENSIONAL DRAWING RELEASED	27JUL15	IP

B

B

A

A



EXPLODED VIEW
SCALE 1 : 1

UNLESS OTHERWISE SPECIFIED DUAL DIMENSIONING XX.Xin [XX.Xmm]	DRAWN IP	DATE 7/27/2015
FOR TOLERANCES NOT SPECIFIED USE: X.X in ± .1 in, X.XX in ± .01 in, X.XXX in ± .005 in [X mm ± 3 mm], [X.X mm ± .3 mm], [X.XX mm ± .13 mm] ANGULAR ± 1°, FRACTIONAL ± 1/64	CHECKED	DATE
THIRD ANGLE PROJECTION 	MATERIAL: SEE COMP. PRINTS	
	FINISH: SEE COMP. PRINTS	
PCTEL PROPRIETARY DATA THE INFORMATION AND/OR DRAWINGS CONTAINED IN THIS DOCUMENT IS CONFIDENTIAL AND PROPRIETARY TO PCTEL, INC. AND MAY NOT BE USED, REPRODUCED, IN WHOLE OR IN PART, OR MODIFIED IN ANY WAY WITHOUT THE EXPRESS WRITTEN PERMISSION OF AN AUTHORIZED REPRESENTATIVE OF PCTEL, INC.		

	PCTEL, INC. 471 BRIGHTON DRIVE BLOOMINGDALE, IL 60108 PH. 630-372-6800 FAX. 630-372-8077	
	DESCRIPTION MOUNT KIT, CPE, ANCHORS, 1.63" TO 2.3" PIPE OD	
DRAWING NO. ODD_FPM-1005		
SIZE B	SCALE 1/4	SHEET 1 OF 1

4

3

4

2

1