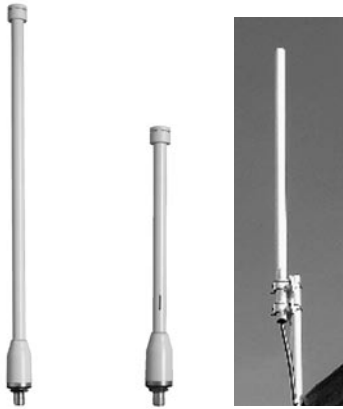


NON CELLULAR OMNIDIRECTIONAL BASE STATION ANTENNAS

Fiberglass Omnidirectional Antennas



MFB49009 MFB58009 MFB24012



Vented System

White MAXRAD Fiberglass Base Station (MFB) Omnidirectional Antennas

The wireless broadband omnidirectional antennas are designed to provide maximum performance and reliability under the toughest weather conditions. These antennas feature a UV stable, vented radome that provides ultimate protection against weather elements. They can be mast or wall mounted.

Features

- UV stable, pultruded fiberglass radome. Allows outdoor installation even in harsh climates.
- Vented system design (all models except MFB24012). Provides reliable performance by protecting the electrical design against extreme moisture and/or temperatures.
- Thread relief on connector (all models, except MFB24012 which has a pigtail). Improved accessibility for taping reduces installation time and improves overall effectiveness.
- Internal o-ring seal in the base of the antenna with integrated connector at the base. Assures a watertight seal to prevent water from migrating into the antenna connector (all models, except MFB24012 which has a pigtail).
- Electrical downtilt options on select models. Provide system planners flexibility in challenging operating environments.



Technical Data

Maximum Power: 25 watts
Polarization: Vertical
Normal Impedance: 50 ohms
VSWR: < 1.5:1
Radome Material: UV resistant pultruded fiberglass
Lightning Protection: Not standard, but all models can be ordered with DC grounding. Add "DC" to the part number to order the antenna with DC grounding.
Termination: N female (except MFB24012). N male connector option available. To order, add "NM" to part number. N female, reverse polarity and reverse threaded connectors optional on most models. 16" RG-213 pigtail with N female connector (for model MFB24012 only.)
Mounting Base Diameter: 1.25 inches (all models except MFB24012) 1.5 inches (model MFB24012)
Mounting Method: MMK1924 — L bracket mount for wall or pipe mount (except MFB24010 and MFB24012) MMK8A - Aluminum extruded bracket for mast mounting (except model MFB24012) MMK11 - Ceiling mount bracket (for MFB24004, MFB24006 and MFB24008 only) MMK12 - Heavy duty bracket for mast mounting the MFB24012 MMK14 - Light duty mounting clamp for MFB24012



MMK1924



MMK8A



MFB24004
with MMK11



MMK12

For detailed specifications, visit <http://antenna.pctel.com>.

Antenna Electrical Specifications

Model	Frequency Range	Gain	Bandwidth @ 1.5:1 VSWR	Vertical Beamwidth @ 1/2 Power
MFB19008A	1850-1990 MHz	8 dBi	140 MHz	12°
MFB24004	2400-2483.5 MHz	4 dBi	100 MHz	30°
MFB24006	2400-2483.5 MHz	6 dBi	100 MHz	20°
MFB24008	2400-2483.5 MHz	8 dBi	100 MHz	13°
MFB24008DT7	2400-2483.5 MHz	8 dBi	100 MHz	13°
MFB24008DT12	2400-2483.5 MHz	8 dBi	100 MHz	13°
MFB24010	2400-2483.5 MHz	10 dBi	100 MHz	9°
MFB24012	2400-2500 MHz	12 dBi	100 MHz	7°
MFB49009	4.9-5.0 GHz	9 dBi	100 MHz	8°
MFB51510	5.15-5.35 GHz	10 dBi	200 MHz	7°
MFB58009	5.725-5.875 GHz	9 dBi	150 MHz	8°
MFB58010	5.725-5.825 GHz	10 dBi	100 MHz	6°

Mechanical Specifications

Model	Height	Weight (Mass)	Bending Moment at Rated Wind	Lateral Thrust at Rated Wind	Equivalent Flat Plate Area	Wind Survival
MFB19008A	24.0" (609.6 mm)	0.70 lbs (0.318 kg)	5.7 ft-lbs	5.9 lbs	.07 ft ²	125 mph
MFB24004	8.1" (205.7 mm)	0.34 lbs (0.154 kg)	0.7 ft-lbs	2.1 lbs	.02 ft ²	125 mph
MFB24006	11.6" (294.6 mm)	0.38 lbs (0.172 kg)	1.4 ft-lbs	3.0 lbs	.04 ft ²	125 mph
MFB24008	20.2" (513.1 mm)	0.50 lbs (0.226 kg)	4.4 ft-lbs	5.2 lbs	.06 ft ²	125 mph
MFB24008DT7	20.2" (513.1 mm)	0.50 lbs (0.226 kg)	4.4 ft-lbs	5.2 lbs	.06 ft ²	125 mph
MFB24008DT12	20.2" (513.1 mm)	0.50 lbs (0.226 kg)	4.4 ft-lbs	5.2 lbs	.06 ft ²	125 mph
MFB24010	36.0" (914.4 mm)	0.65 lbs (0.295 kg)	14.7 ft-lbs	10.1 lbs	.11 ft ²	125 mph
MFB24012	44.0" (1,118 mm)	3.00 lbs (1.400 kg)	41 ft-lbs	22.4 lbs	.25 ft ²	125 mph
MFB49009	20.2" (513.1 mm)	0.5 lbs (0.226 kg)	4.4 ft-lbs	5.2 lbs	.06 ft ²	125 mph
MFB51510	20.2" (513.1 mm)	0.5 lbs (0.226 kg)	4.4 ft-lbs	5.2 lbs	.06 ft ²	125 mph
MFB58009	15.7" (398.8 mm)	0.43 lbs (0.195 kg)	2.7 ft-lbs	4.1 lbs	.046 ft ²	125 mph
MFB58010	20.2" (513.1 mm)	0.5 lbs (0.226 kg)	4.4 ft-lbs	5.2 lbs	.06 ft ²	125 mph