

Base Station Mounts

Model	Description	Application	Qty per Assembly
MBSWM	Wall mount	For wall mounting antennas of up to 2-1/4" in diameter.	1
MMK1	3-groove backing plate	For mounting a 1-5/16" outer diameter antenna to a 1-1/4" maximum outer diameter mast.	1
MMK1924	Stainless steel "L" bracket mount for wall or pipe mount	For mounting an omnidirectional antenna to a 2" maximum diameter mast. Bracket is 6" long with a 5/8" diameter hole for mounting the antenna.	1
MMK2	1-1/2" stainless steel "L" bracket	For mounting an antenna with a base connector to a 2" maximum diameter mast. Bracket is 9" long with a 5/8" diameter hole for mounting the antenna.	1
MMK3	Base station mount bracket	For mounting a 1-5/16" outer diameter antenna to a 1-1/4" maximum outer diameter mast.	2
MMK4	Heavy duty fiberglass base station mount	For mounting an antenna with 2-2/2" maximum diameter onto a 2-1/2" maximum outer diameter mast.	2
MMK5	Heavy duty mast to tower mount	For mounting a 3-1/4" maximum diameter antenna onto a 3-1/4" maximum diameter mast.	2
MMK6	MFB base station mount bracket	For mounting a 1-5/16" outer diameter antenna base without a pigtail to a maximum 2" diameter mast.	1
MMK8	Aluminum MFB mount bracket	For mounting a 1-1/4" diameter antenna to a 2-1/2" maximum diameter mast.	1
MMK9	Aluminum MFB mount bracket	For mounting a 1-5/16" diameter antenna to a 2-1/2" maximum diameter mast.	1
MPAB3	Adjustable mounting bracket for MP panel antennas	Adjustable mounting bracket, interface plate and hardware for 6 dBd MP directional panel antennas.	1
MPAB4	Adjustable mounting bracket for MP panel antennas	Adjustable mounting bracket for mounting an 8 dB directional panel to pipes of up to 2.3" OD.	1
MPAB7	Heavy duty outdoor adjustable mount with +/-35° up/tilt/down/tilt adjustment	Adjustable outdoor mounting bracket for MP XF 800/900 MHz directional panel antennas. One 6" and one 8" bracket.	2
MPAB8	Heavy duty outdoor adjustable mount with 17° up/tilt/down/tilt adjustment	Adjustable outdoor mounting bracket for MPXF 800/900 MHz directional panel antennas. Two 6" brackets.	2
MPAB11	Short adjustable indoor mount	Short adjustable indoor mounting bracket for MPXF 800/900 MHz directional panel antennas.	1
MPAB12	Long adjustable corner mount	Long adjustable indoor corner mount for MPXF 800/900 MHz directional panel antennas.	1
MYK1	Mount kit for 7/8" boom yagis	For mounting 7/8" diameter boom yagis to a 1-5/8" maximum diameter mast.	1
MYK2	Mount kit for 1-1/4" boom yagis	For mounting 1-1/4" diameter boom yagis to a 2" maximum diameter mast.	1
MYK3	Heavy duty mount for 7/8" boom yagis	For mounting 7/8" diameter boom yagis to a 2" maximum diameter mast.	1
MYK4	Mounting kit for bottom dipole fiberglass base station antennas	For mounting to a 2" maximum diameter mast.	1
MYK6	Mount bracket for MMS8	For mounting to a 2" maximum diameter mast.	2
MYK7	Mount bracket for MMS18	For mounting to a 2" maximum diameter mast.	3
MYK9	Heavy duty aluminum plate mounting bracket	For mounting to a 2" maximum diameter mast.	1
MYK10	Heavy duty cast yagi bracket	For mounting a 7/8" OD yagi to a 2-1/2" maximum OD mast. Adjustable for vertical or horizontal polarization.	1
MYK11	Heavy duty mounting kit for 7/8" boom yagis	For mounting a 7/8" diameter yagis with pre-drilled holes to 1-5/8" maximum diameter masts.	1
MYK14	Sand cast mounting bracket for 3/4"-7/8" boom yagis	For mounting antennas with boom diameters of 3/4" to 7/8" to 3" maximum diameter masts.	1
MYK16	Mounting bracket for 1-1/4" diameter boom yagis	For mounting to masts measuring from 1-5/8" to 2" in diameter.	1
MYK17	Mounting bracket for 0.75" diameter boom yagis	For mounting to masts measuring 1-5/8" in diameter.	1

MMK Mounts for Base Station Antennas



MMK1



MMK2



MMK3



MMK4



MMK5



MMK6



MMK8



MMK9

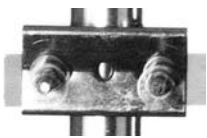


MMK1924



MBSWM

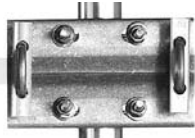
MYK Mounts for Yagi Antennas and MPAB Mounts for Panel Antennas



MYK1



MYK2 (front)



MYK3



MYK4 (front)



MYK6



MYK7



MYK9



MYK10



MYK11



MYK14



MYK16



MYK17



MPAB3



MPAB4



MPAB8



MPAB12