

48' T300 TITAN TOWER

(P/N 4.95.0305.000)

12" c/c

15" c/c

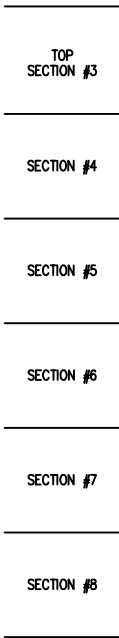
18" c/c

21" c/c

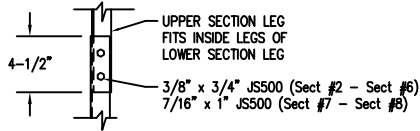
24" c/c

27" c/c

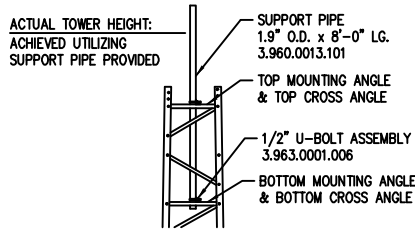
30" c/c



SECTION SPLICE



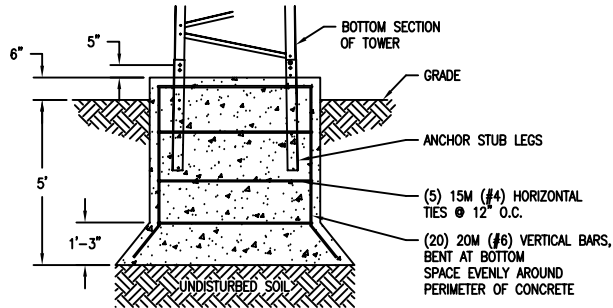
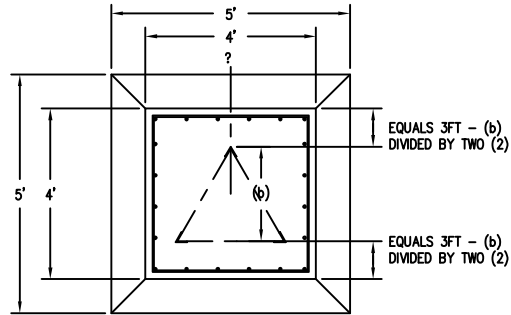
TOP ELEVATION



MAXIMUM ALLOWABLE ANTENNA AREA

SURVIVAL DESIGN NO ICE (ROUND/FLAT)		
70mph WIND	85mph WIND	100mph WIND
25/17 (sqft)	11/8 (sqft)	1/1 (sqft)

FOUNDATION DESIGN (NORMAL DRY SOIL)



FOUNDATION LOADS:

MAX. OVERTURNING MOMENT (K*FT) = 28.00
MAX. SHEAR (kips) = 1.0
DESIGN UPLIFT PER INDIVIDUAL LEG (kips) = 14.0

CONCRETE VOLUME:


4.0 CUBIC YARDS

REV.	BY:	CHK:	DESCRIPTION	DATE

REFERENCE DRAWINGS:

DRAWING NUMBER	DRAWING NUMBER

CONFIDENTIAL: ALL INTELLECTUAL PROPERTY RIGHTS HEREIN ARE THE PROPERTY OF TRYLON INC. ALL DUPLICATION, RECORDING, DISCLOSURE OR USE IS PROHIBITED WITHOUT WRITTEN CONSENT OF TRYLON INC. CUSTOMERS:



DRAWING NO. 000001.610.0080

SITE: SCALE: 85.000

DATE: 07 MAR 07	BY: MRH	CHK: CR	APP: JB
-----------------	---------	---------	---------

TITLE: 48' T300 TITAN TOWER

- PRE-ASSEMBLED PART NUMBER 4.95.0305.000.
- MAX. ANTENNA LOADS ARE CENTRALLY LOCATED AND BALANCED, 3FT OR LESS ABOVE THE TOWER TOP.
- "SURVIVAL" DESIGN IN NOT THE SAME AS EIA-222. FOR EIA COMPLIANCE SEE OUR SUPERTITAN MODELS.
- MINIMUM 32ksi YIELD FOR ALL COMPONENTS.
- CONSTRUCTED FROM PASSIVATED G-90 COAT GALVANIZED STEEL SHEET.
- TOWERS COME ASSEMBLED IN 8FT SECTIONS.
- TOP SUPPORT PIPE IS INCLUDED.
- FOR OPTIONAL ROCK BOLT FOUNDATION SEE DWG 000001.610.0033 AND 000001.610.0021.