

190FT S310 SUPERTITAN TOWER

- 1.5' H/H TOP
- 1.75' H/H SECTION #3
- 2' H/H SECTION #4
- 2.25' H/H SECTION #5
- 2.5' H/H SECTION #6
- 2.75' H/H SECTION #7
- 3' H/H SECTION #8
- 3.25' H/H SECTION #9
- 3.5' H/H SECTION #10HD
- 3.75' H/H SECTION #11HD
- 4' H/H SECTION #12HD
- 5' H/H SECTION #13
- 6' H/H SECTION #14
- 7' H/H SECTION #15
- 8' H/H SECTION #16
- 9' H/H SECTION #17
- 10' H/H SECTION #18
- 11' H/H SECTION #19
- 12' H/H SECTION #20
- 13' H/H SECTION #21

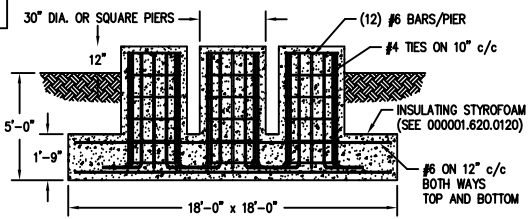
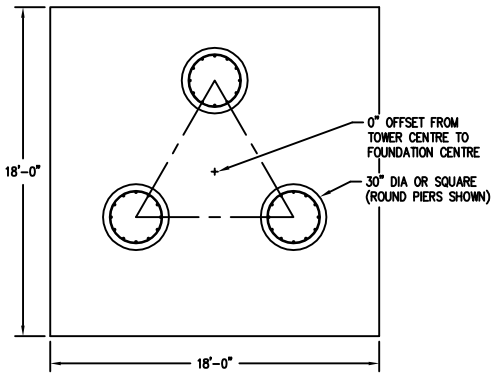
U S A	MAXIMUM ALLOWABLE ANTENNA AREA - PER TIA/EIA 222 REV. F					
	WIND VELOCITY RATINGS					
	NO ICE (ROUND/FLAT)			1/2" ICE (ROUND/FLAT)		
	70 mph	90 mph	100 mph	70 mph	90 mph	100 mph
	20/14	--/--	--/--	20/14	--/--	--/--

**FOUNDATION LOADS:**  
 MAX. OVERTURNING MOMENT (K\*FT) =  
 MAX. SHEAR (kips) =  
 MAX. AXIAL (kips) =

U S A	MAXIMUM ALLOWABLE ANTENNA AREA - PER TIA/EIA 222 REV. G, CLASS 1 (NO ICE)					
	WIND VELOCITY RATINGS					
	90 mph 3sg	110mph 3sg	120 mph 3sg	3sg = 3 SECOND GUST WINDSPEED FM = FASTEST MILE WINDSPEED		
	75 mph FM	90 mph FM	100 mph FM			
	ROUND	FLAT	ROUND	FLAT	ROUND	FLAT
	17	12	--	--	--	--

**FOUNDATION LOADS:**  
 MAX. OVERTURNING MOMENT (K\*FT) =  
 MAX. SHEAR (kips) =  
 MAX. AXIAL (kips) =

FOUNDATION DESIGN (NORMAL DRY SOIL)



CUBIC YARDS of CONCRETE				
PAD	RND PIER	SQ PIER	TOTAL RND	TOTAL SQ
21.00	0.77	0.98	23.32	23.95

REV.	BY:	CHK:	DESCRIPTION	DATE

REFERENCE DRAWINGS:

DRAWING NUMBER	DRAWING NUMBER

CONFIDENTIAL: ALL INTELLECTUAL PROPERTY RIGHTS HEREIN ARE THE PROPERTY OF TRYLON INC. ALL DUPLICATION, RECORDING, DISCLOSURE OR USE IS PROHIBITED WITHOUT WRITTEN CONSENT OF TRYLON INC.

**Trylon**

DRAWING NO. 000001.620.0473

CUSTOMER: SITE: SCALE: 285.000

DATE: 16 APR 07 BY: CHK: APP:

TITLE: 190FT S310 SUPERTITAN PROFILE

- NOTES:
- 1) KNOCK-DOWN PART NUMBER 5.94.0310.190.
  - 2) PRE-ASSEMBLED PART NUMBER-NOT AVAILABLE.
  - 3) ANTENNA LOADS ARE CENTRALLY LOCATED AND BALANCED, 3-FT OR LESS ABOVE THE TOWER TOP.
  - 4) WIND LOADING ASSUMES (1) 1/2" TRANSMISSION LINE PER 10 SQ.FT. OF ROUND MEMBER ANTENNA AREA.