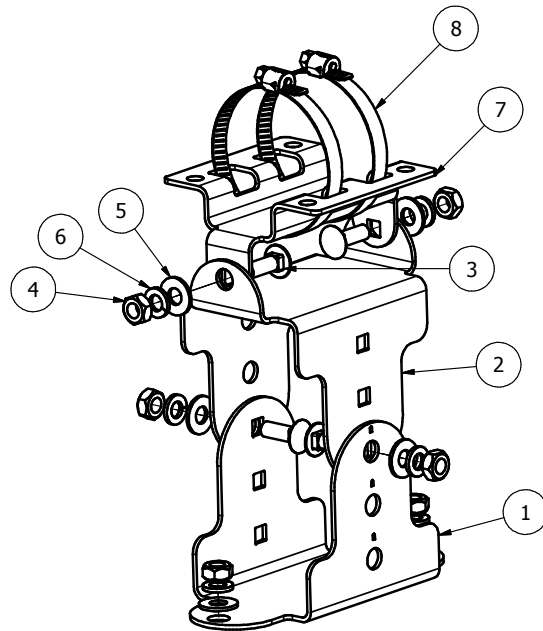
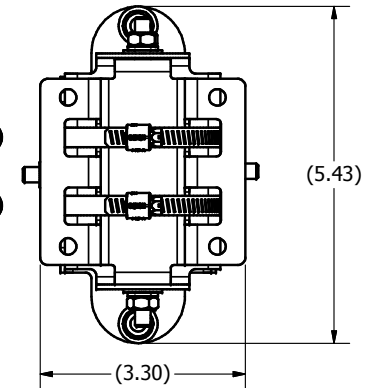
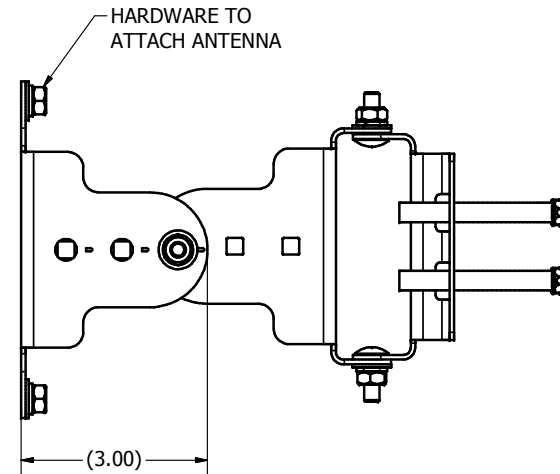
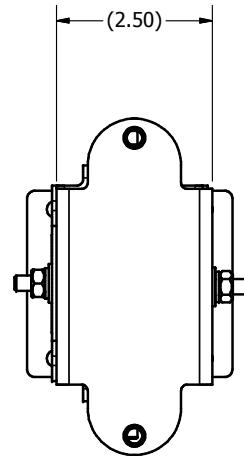


NOTES: UNLESS OTHERWISE SPECIFIED

1. INTERPRET DRAWING PER ANSI/ASME Y14.5
2. MATERIAL:
  - BRACKETS: NICKEL ZINC TRIVALENT PLATED STEEL
  - HARDWARE: NICKEL ZINC TRIVALENT PLATED STEEL
  - HOSE CLAMP: 316 SST
3. PARTS SHALL BE CLEAN AND FREE OF FOREIGN MATTER. ALL DIMENSIONS APPLY AFTER PLATING.
4. ALL MATERIALS SHALL BE ROHS COMPLIANT.
5. PARTS SHALL BE PACKAGED TO PREVENT DAMAGE IN SHIPMENT AND HANDLING.
6. AN [X] DIM IDENTIFIES A KEY CHARACTERISTIC AND MAY REQUIRE Cpk STUDY AS OUTLINED IN PCTEL CQR. A COMPLETE 1ST ARTICLE LAYOUT SHALL BE SUBMITTED WITH INITIAL ORDER. A (REF) DIMENSION IS FOR INFORMATION PURPOSES ONLY AND NO TOLERANCE IS IMPLIED.
7. SUPPLIER SHALL REVIEW AND COMPLETE AND SIGN SUPPLIER INPUT/ PRINT ACCEPTANCE BLOCK.

REVISION HISTORY			
REV	DESCRIPTION	DATE	APPROVED
A	C04960	16JUN10	JMP
B	RELEASE ALL COMPONENTS TO PRODUCTION C05859	03NOV10	JMP



PARTS LIST			
ITEM	QTY	PART NUMBER	DESCRIPTION
1	1	P01374	BRACKET; FLAT PANEL, ADJ MOUNT
2	1	P01374-1	BRACKET; FLAT PANEL, ADJ MOUNT
3	4	P02371	BOLT, CARRIAGE, 1/4-20 X 0.75", STEEL GRADE 5, NI ZN TRIVALENT
4	6	P00241-1	NUT, HEX 1/4-20, STEEL, GRADE 2, NI ZN TRIVALENT
5	6	P00243-1	WASHER, 1/4, FLAT, STEEL GRADE 2, NI ZN TRIVALENT
6	6	P00242-1	WASHER, 1/4, SPLIT LOCK, STEEL, GRADE 2, HDG
7	1	P01375	BRACKET, FLAT PANEL, ADJ MOUNT
8	2	P00467-1	HOSE CLAMP, 52-76MM DIA, 12.6MM WIDE BAND, 316 SST,

SUPPLIER PRINT ACCEPTANCE:

Accept drawing/specification:  
No changes needed:

This part is RoHS compliant

This part is REACH compliant

Accept drawing/specification.  
Notes/Mark-ups added

Cannot accept drawing/spec.  
Notes/Mark-ups added

Supplier Projected Outgoing Quality:

SIGMA LEVEL : \_\_\_\_\_ or PPM: \_\_\_\_\_

Signature \_\_\_\_\_ Date: \_\_\_\_\_

UNLESS OTHERWISE SPECIFIED DIMENSIONS ARE IN INCHES

FOR TOLERANCES NOT SPECIFIED USE:  
XX in ± .1 in, X.XX in ± .01 in, X.XXX in ± .005 in  
ANGULAR ± 1°. FRACTIONAL ± 1/64

THIRD ANGLE PROJECTION

DRAWN: JMP DATE: 7/23/2014

CHECKED: \_\_\_\_\_ DATE: \_\_\_\_\_

MATERIAL: \_\_\_\_\_

FINISH: \_\_\_\_\_

**PCTEL PROPRIETARY DATA**

THE INFORMATION AND/OR DRAWINGS CONTAINED IN THIS DOCUMENT IS CONFIDENTIAL AND PROPRIETARY TO PCTEL, INC. AND MAY NOT BE USED, REPRODUCED, IN WHOLE OR IN PART, OR MODIFIED IN ANY WAY WITHOUT THE EXPRESS WRITTEN PERMISSION OF AN AUTHORIZED REPRESENTATIVE OF PCTEL, INC.

**PCTEL**

PCTEL, INC.  
471 BRIGHTON DRIVE  
BLOOMINGDALE, IL 60108  
PH. 630-372-6800  
FAX. 630-372-8077

DESCRIPTION: MOUNT KIT, CPE

DRAWING NO.: P02370

SIZE: B SCALE: NA SHEET: 1 OF 1