

32' T200 TITAN TOWER

(P/N 4.95.0203.000)

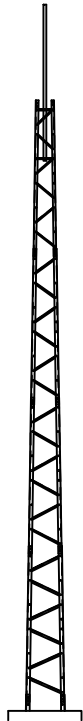
9" c/c

12" c/c

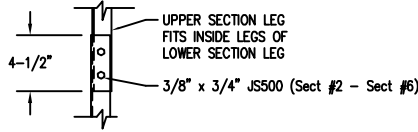
15" c/c

18" c/c

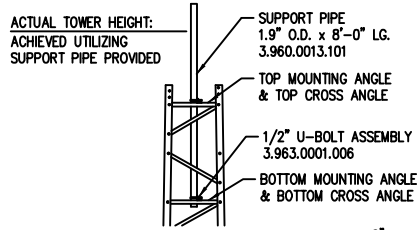
21" c/c



SECTION SPLICE



TOP ELEVATION

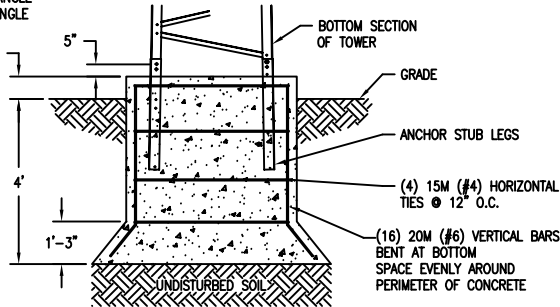
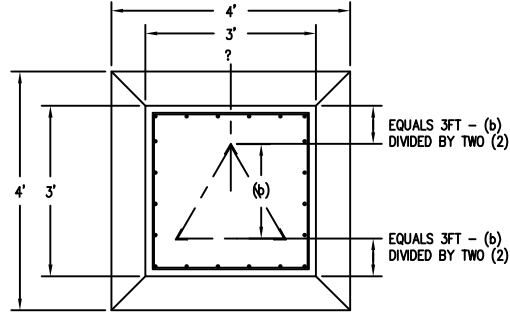


MAXIMUM ALLOWABLE ANTENNA AREA

SURVIVAL DESIGN NO ICE (ROUND/FLAT)

70mph WIND	85mph WIND	100mph WIND
16/10 (sqft)	6/4 (sqft)	--/--

FOUNDATION DESIGN (NORMAL DRY SOIL)



FOUNDATION LOADS:

MAX. OVERTURNING MOMENT (K*FT) = 17.00
 MAX. SHEAR (kips) = 0.7
 DESIGN UPLIFT PER INDIVIDUAL LEG (kips) = 10.0

CONCRETE VOLUME:

2.0 CUBIC YARDS


REV.	BY:	BY:	DESCRIPTION	DATE
REV.	REV.	CHK.		

REFERENCE DRAWINGS:

DRAWING NUMBER	DRAWING NUMBER

- 1) PRE-ASSEMBLED PART NUMBER 4.95.0203.000.
- 2) MAX. ANTENNA LOADS ARE CENTRALLY LOCATED AND BALANCED, 3FT OR LESS ABOVE THE TOWER TOP.
- 3) "SURVIVAL" DESIGN IN NOT THE SAME AS EIA-222. FOR EIA COMPLIANCE SEE OUR SUPERTITAN MODELS.
- 4) MINIMUM 32ksi YIELD FOR ALL COMPONENTS.
- 5) CONSTRUCTED FROM PASSIVATED G-90 COAT GALVANIZED STEEL SHEET.
- 6) TOWERS COME ASSEMBLED IN 8FT SECTIONS.
- 7) TOP SUPPORT PIPE IS INCLUDED.
- 8) FOR OPTIONAL ROCK BOLT FOUNDATION SEE DWG 000001.610.0033 AND 000001.610.0021.

CONFIDENTIAL: ALL INTELLECTUAL PROPERTY RIGHTS HEREIN ARE THE PROPERTY OF TRYLON INC. ALL DUPLICATION, RECORDING, DISCLOSURE OR USE IS PROHIBITED WITHOUT WRITTEN CONSENT OF TRYLON INC. CUSTOMERS:



DRAWING NO. 000001.610.0065

DATE: 07 MAR 07 BY: MRH CHK: CR APP: JB

SCALE: 60.000

TITLE: 32' T200 TITAN TOWER