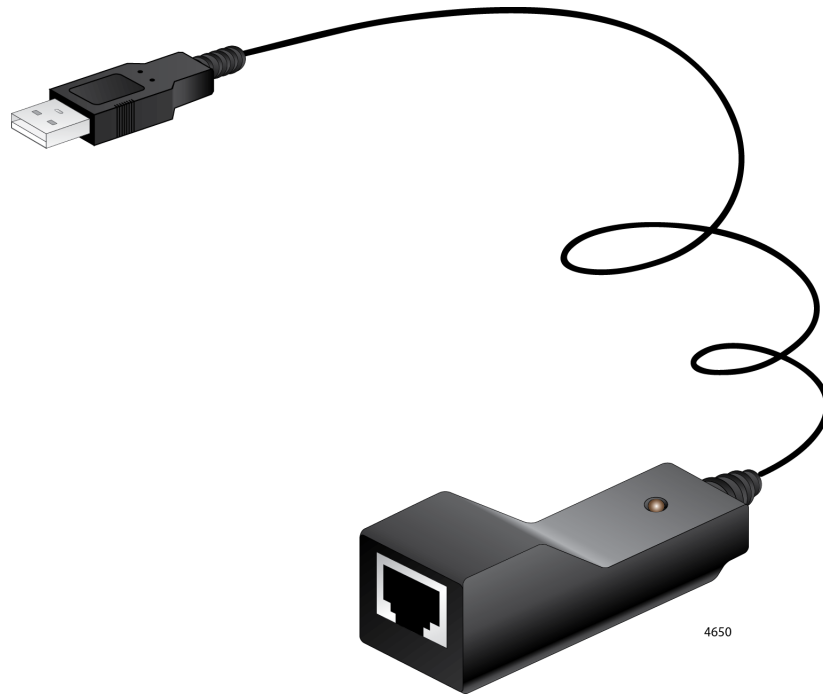


AT-VT-Kit3

MANAGEMENT CABLE



Installation Guide

Copyright © 2019 Allied Telesis, Inc.

All rights reserved. No part of this publication may be reproduced without prior written permission from Allied Telesis, Inc.

Microsoft and Internet Explorer are registered trademarks of Microsoft Corporation. Netscape Navigator is a registered trademark of Netscape Communications Corporation. All other product names, company names, logos or other designations mentioned herein are trademarks or registered trademarks of their respective owners.

Allied Telesis, Inc. reserves the right to make changes in specifications and other information contained in this document without prior written notice. The information provided herein is subject to change without notice. In no event shall Allied Telesis, Inc. be liable for any incidental, special, indirect, or consequential damages whatsoever, including but not limited to lost profits, arising out of or related to this manual or the information contained herein, even if Allied Telesis, Inc. has been advised of, known, or should have known, the possibility of such damages.

Electrical Safety and Emissions Standards

This section contains the following:

- "Federal Communications Commission Interference Statement"
- "European Union Restriction of the Use of Certain Hazardous Substances (RoHS) in Electrical and Electronic Equipment" on page 4
- "Emissions, Immunity and Electrical Safety Standards" on page 5
- "Translated Safety Statements" on page 5

This product meets the following standards:

Federal Communications Commission Interference Statement

Declaration of Conformity

Manufacturer Name: **Allied Telesis, Inc.**

Declares that the product: **AT-VT-Kit3 Management Cable**

Model Number: **AT-VT-Kit3**

This device complies with Part 15 of the FCC Rules. Operation is subject to the following two conditions: (1) This device may not cause harmful interference, and (2) this device must accept any interference received, including interference that may cause undesired operation.

This equipment has been tested and found to comply with the limits for a Class B digital device, pursuant to Part 15 of the FCC Rules. These limits are designed to provide reasonable protection against harmful interference in a residential installation. This equipment generates, uses and can radiate radio frequency energy and, if not installed and used in accordance with the instructions, may cause harmful interference to radio communications. However, there is no guarantee that interference will not occur in a particular installation. If this equipment does cause harmful interference to radio or television reception, which can be determined by turning the equipment off and on, the user is encouraged to try to correct the interference by one of the following measures:

- Reorient or relocate the receiving antenna.
- Increase the separation between the equipment and receiver.
- Connect the equipment into an outlet on a circuit different from that to which the receiver is connected.
- Consult the dealer or an experienced radio/TV technician for help.

**Caution**

FCC Caution: Any changes or modifications not expressly approved by the party responsible for compliance could void the user's authority to operate this equipment. ⚡ E80

**Avertissement**

Avertissement de la FCC: Les changements ou modifications non expressément approuvés par la partie responsable de la conformité pourraient annuler l'autorité de l'utilisateur à utiliser cet équipement. ⚡ E80

European Union Restriction of the Use of Certain Hazardous Substances (RoHS) in Electrical and Electronic Equipment

This Allied Telesis RoHS-compliant product conforms to the European Union Restriction of the Use of Certain Hazardous Substances (RoHS) in Electrical and Electronic Equipment. Allied Telesis ensures RoHS conformance by requiring supplier Declarations of Conformity, monitoring incoming materials, and maintaining manufacturing process controls.

Emissions, Immunity and Electrical Safety Standards

EMI	FCC part15 Subpart B/Class B
	EN55032 Class B
	AS/NZS CISPR 32 Class B
	VCCI CISPR32 Class B
	ICES-003 Class B
	EN61000-3-2
	EN61000-3-3



Warning

In a domestic environment this product may cause radio interference in which case the user may be required to take adequate measures. ⚡ E84

EMS	IEC 61000-4-2
	IEC 61000-4-3
	IEC 61000-4-4
	IEC 61000-4-5
	IEC 61000-4-6
	IEC 61000-4-8
	IEC 61000-4-11
	EN55024

Translated Safety Statements

Important: The ⚡ indicates that a translation of the safety statement is available in a PDF document titled *Translated Safety Statements* on the Allied Telesis website at www.alliedtelesis.com/support.

Contents

Preface	9
Safety Symbols Used in this Document	10
Contacting Allied Telesis	11
Chapter 1: Introduction	13
Description	14
Features	15
Supported Operating Systems	15
LED	16
Chapter 2: Installing the Hardware	17
Reviewing Safety Precautions	18
Connecting the AT-VT-Kit3 Management Cable	19
Chapter 3: Installing the Driver Software	21
Overview	22
Guidelines	22
Downloading the Driver Software	23
Installing the Driver Software	25
Confirming the Driver Software Installation	29
Chapter 4: Uninstalling the Driver Software	31
Overview	32
Guidelines	32
Uninstalling the Driver Software	33
Confirming the Driver Software is Uninstalled	35
Appendix A: Specifications	37
Physical Specifications	37
Environmental Specifications	37
RJ-45 Twisted Pair connector	38

Preface

This manual is the installation guide for the AT-VT-Kit3 Management Cable.

The Preface contains the following sections:

- “Safety Symbols Used in this Document” on page 10
- “Contacting Allied Telesis” on page 11

Safety Symbols Used in this Document

This document uses the following conventions:

Note

Notes provide additional information.



Caution

Cautions inform you that performing or omitting a specific action may result in equipment damage or loss of data.



Warning

Warnings inform you that performing or omitting a specific action may result in bodily injury.

Contacting Allied Telesis

If you need assistance with this product, you may contact Allied Telesis technical support by going to the Support & Services section of the Allied Telesis web site at **www.alliedtelesis.com/support**. You can find links for the following services on this page:

- ❑ 24/7 Online Support - Enter our interactive support center to search for answers to your questions in our knowledge database, check support tickets, learn about Return Merchandise Authorization (RMA), and contact Allied Telesis technical experts.
- ❑ USA and EMEA phone support - Select the phone number that best fits your location and customer type.
- ❑ Hardware warranty information - Learn about Allied Telesis warranties and register your product online.
- ❑ Replacement Services - Submit an RMA request via our interactive support center.
- ❑ Documentation - View the most recent installation guides, user guides, software release notes, white papers and data sheets for your product.
- ❑ Software Updates - Download the latest software releases for your product.

For sales or corporate contact information, go to **www.alliedtelesis.com/purchase** and select your region.

Chapter 1

Introduction

This chapter provides an introduction to the AT-VT-Kit3 Management Cable.

This chapter contains the following sections:

- “Description” on page 14
- “LED” on page 16

Description

The AT-VT-Kit3 management cable is a USB-to-Serial converter with a USB-A male connector on one end and an RJ-45 female receptor on the other end.

The AT-VT-Kit3 management cable is powered via the USB connection and is compatible with the USB 2.0 standard.

Figure 1 shows the AT-VT-Kit3 management cable.

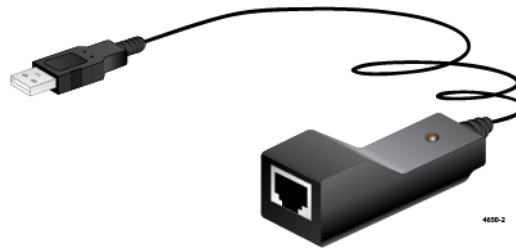


Figure 1. AT-VT-Kit3 Management Cable

The AT-VT-Kit3 management cable is designed to connect a laptop/desktop computer and a network device, such as a switch or router. See Figure 2 as an example.

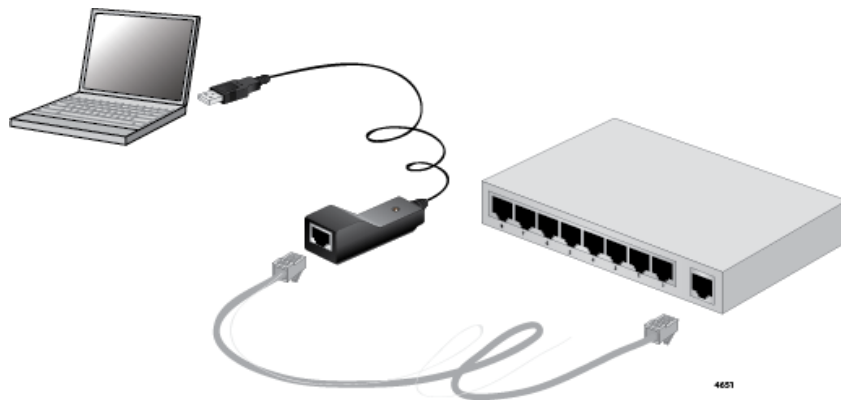


Figure 2. Example of the AT-VT-Kit3 Cable Usage Example

After you connect the AT-VT-Kit3 management cable to a laptop/desktop computer, install driver software onto the Windows operating system. To install driver software, see Chapter 3, "Installing the Driver Software" on page 21.

Features Here is a list of the AT-VT-Kit3 management cable features:

- Converts from a USB port to a RJ-45 console port (RS232)
- Support straight to wiring RJ-45 cable
- Plug-and-Play, small and lightweight
- Up to 115.2Kbps data rate
- USB2.0 compliant

Supported Operating Systems The following list shows the supported operating systems to use the AT-VT-Kit3 management cable:

- Windows 7
- Windows 8.1
- Windows 10

LED

The AT-VT-Kit3 management cable comes with one LED on the RJ-45 receptor, as shown in Figure 3.

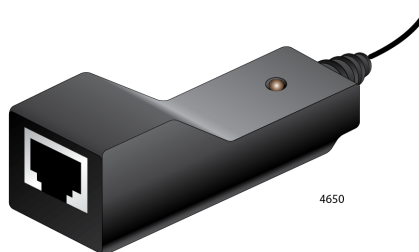


Figure 3. LED on the AT-VT-Kit3 Management Cable

Table 1 describes the states that the LED indicates.

Table 1. LED Status

State	Description
Solid Orange	The USB-to-Serial converter is powered on and running normally.
Off	The USB-to-Serial converter is powered off.

Chapter 2

Installing the Hardware


This chapter contains the following sections:

- “Reviewing Safety Precautions” on page 18
- “Connecting the AT-VT-Kit3 Management Cable” on page 19

Reviewing Safety Precautions


Review the following safety precautions before you begin to use the AT-VT-Kit3 management cable.

Note

The  indicates that a translation of the safety statement is available in a PDF document titled “Translated Safety Statements” posted on the Allied Telesis website at www.alliedtelesis.com/support/software/.

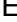


Warning

Do not work on this equipment or cables during periods of lightning activity.  E2



Warning

Operating Temperature: This product is designed for a maximum ambient temperature of 40 degrees C.  E7

Connecting the AT-VT-Kit3 Management Cable

The AT-VT-Kit3 management cable is designed to connect a USB port on a laptop/desktop computer and a console port on a network device. See Figure 4 as an example.

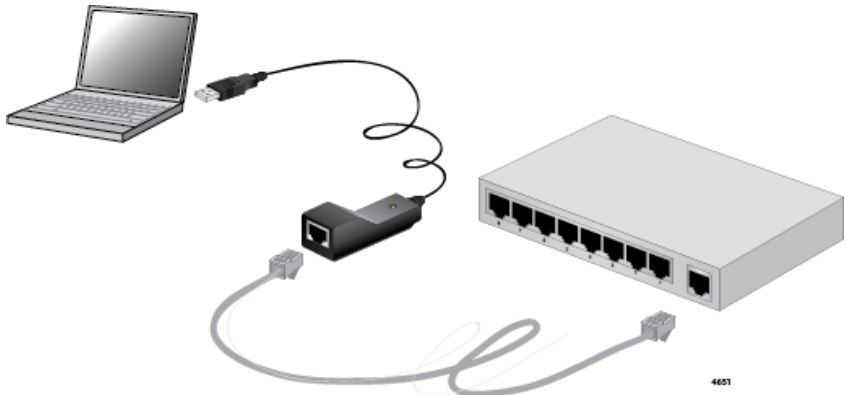


Figure 4. Example of the AT-VT-Kit3 Cable Usage Example

Note

To use the AT-VT-Kit3 management cable, you must install the driver software on your Windows system.

To connect the AT-VT-Kit3 management cable, perform the following procedure:

1. Review “Reviewing Safety Precautions” on page 18.
2. Unpack the shipping box.
3. Check the AT-VT-Kit3 management cable for visible signs of damage.
4. Connect the USB connector of the AT-VT-Kit3 management cable to your laptop/desktop computer.
5. Go to “Installing the Driver Software” on page 21.
6. Connect the RJ-45 receptor of the AT-VT-Kit3 management cable to a network device.

Chapter 3

Installing the Driver Software

This chapter describes how to install driver software onto the AT-VT-Kit3 management cable converter. It contains the following topics:

- ❑ “Overview” on page 22
- ❑ “Downloading the Driver Software” on page 23
- ❑ “Installing the Driver Software” on page 25
- ❑ “Confirming the Driver Software Installation” on page 29

Overview

After you connect the AT-VT-Kit3 management cable to your computer, your next step is to install driver software onto your Windows operating system.

Guidelines Here are the guidelines for installing and updating the driver software on your operating system:

- ❑ To install or update the driver software, you must have administrative privileges.
- ❑ Allied Telesis provides one driver software executable file for all supported Windows operating systems.

Downloading the Driver Software

To use the AT-VT-Kit3 management cable, you must download driver software from the Allied Telesis website and install it onto your system.

To download driver software, do the following:

1. Start your Windows operating system and log in.
2. Open a web browser, such as Internet Explorer or FireFox.
3. Enter the following on the web browser:

<http://www.alliedtelesis.com/support/software>

The Allied Telesis Software Download page is displayed. See Figure 5.

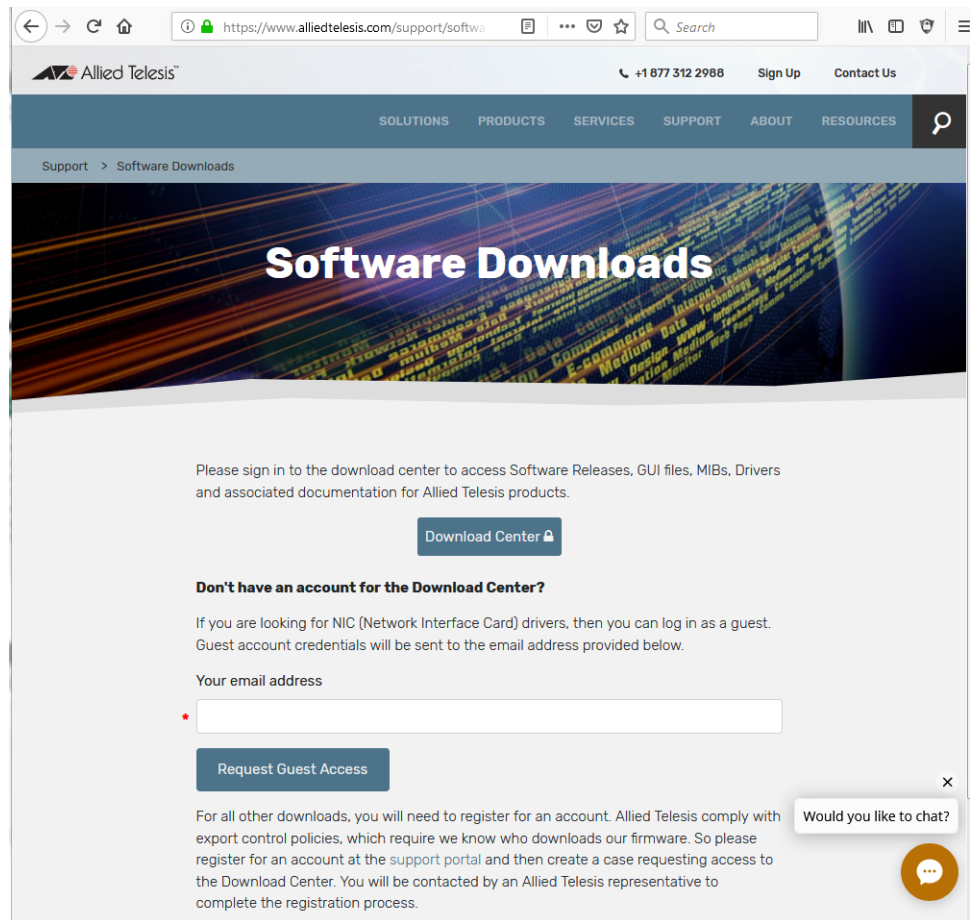


Figure 5. Software Downloads Page

4. Follow the directions shown on the page to log in.
5. Select the driver for the AT-VT-Kit3 management cable.

6. Save the zip folder onto your system.
7. Right-click the zip folder and select **Extract All**.
8. Specify the location of the folder and click **Extract**.
9. Go to “Installing the Driver Software” on page 25 for installing the driver software.

Installing the Driver Software

To install the driver software on your system, follow one of the procedures below:

Note

The following procedures apply for all supported Windows systems, such as Windows 7, Windows 8.1 and Windows 10.

To install the driver software on your Windows system, do the following:

1. Start your Windows operating system and log in.
2. Connect the AT-VT-Kit3 management cable to your PC.

See “Connecting the AT-VT-Kit3 Management Cable” on page 19.

3. Locate the driver software executable file that you downloaded. See Figure 6.

Note

To obtain the driver software, see “Downloading the Driver Software” on page 23.

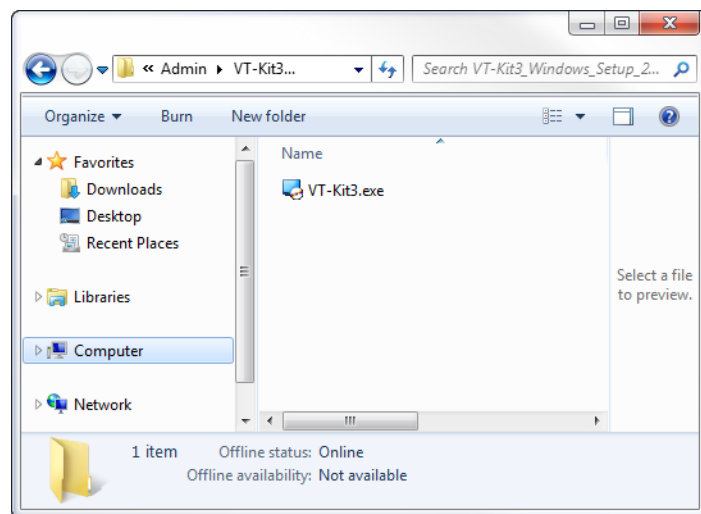


Figure 6. VT-Kit3 Executable Icon

4. Double-click the executable icon.

The Security Warning windows appears in Figure 7.

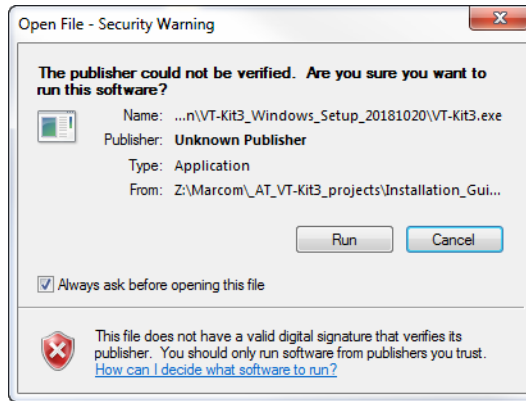


Figure 7. Security Warning

5. Click **Run**.

InstallShield Wizard appears a window as shown in Figure 8.

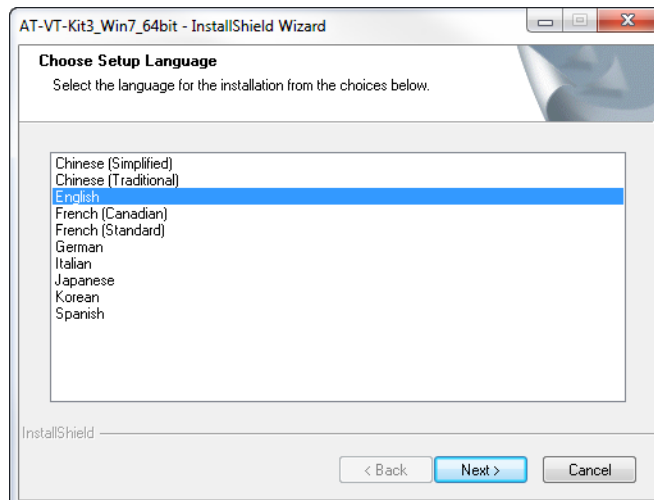


Figure 8. InstallShield Wizard- Select Language

6. Select a language you want to use for this installation and click **Next**.

InstallShield Wizard displays a window to confirm the installation as shown in Figure 9.

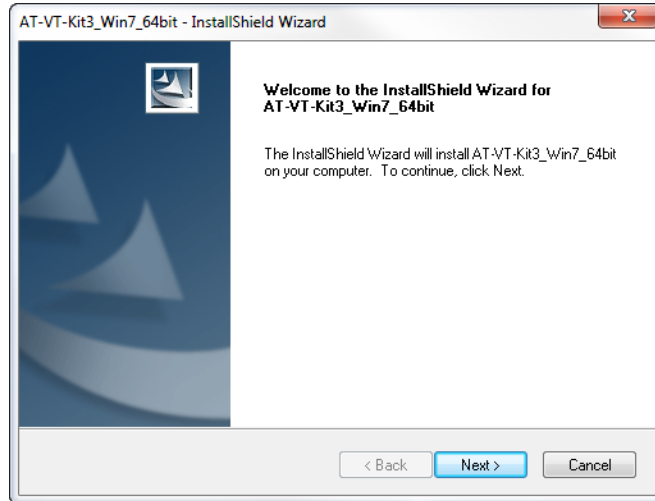


Figure 9. InstallShield Wizard - Confirm Installation

7. Click **Next**.

InstallShield Wizard displays a window to confirm the installation. See Figure 10.

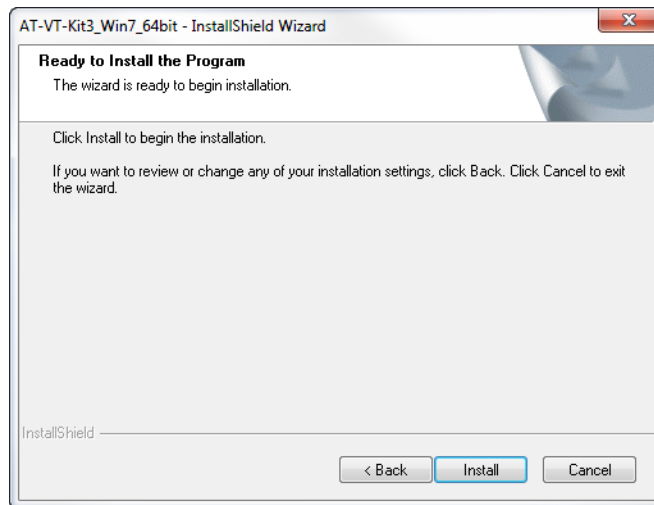


Figure 10. InstallShield Wizard - Install Start

- 8. Click **Install**.

The Windows Security window appears as shown in Figure 11.

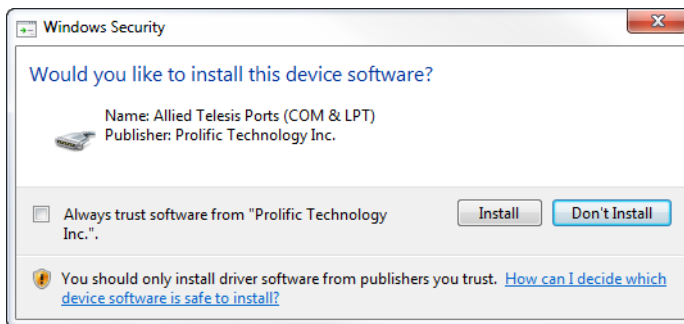


Figure 11. Windows Security

- 9. Click **Install**.

InstallShield Wizard displays a window to notify you that the installation is completed. See Figure 12.

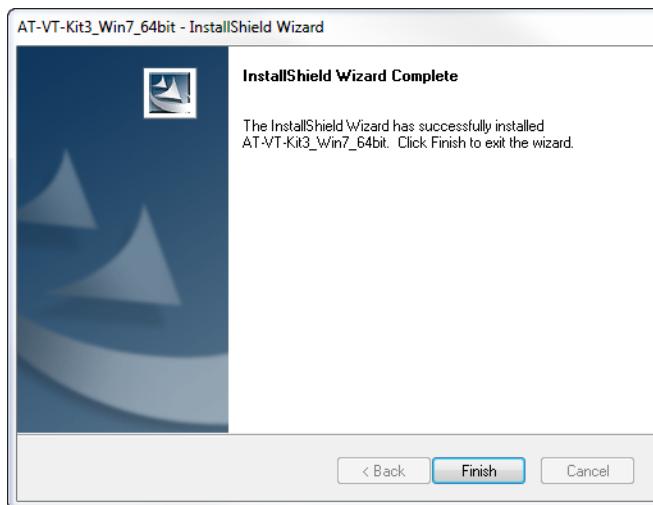


Figure 12. InstallShield Wizard - Installation Finish

- 10. Click **Finish**.

Confirming the Driver Software Installation

To confirm if the driver software is successfully installed, do the following:

1. Start your Windows operating system and log in.
2. Open Device Manager in Control Panel. See Figure 13.

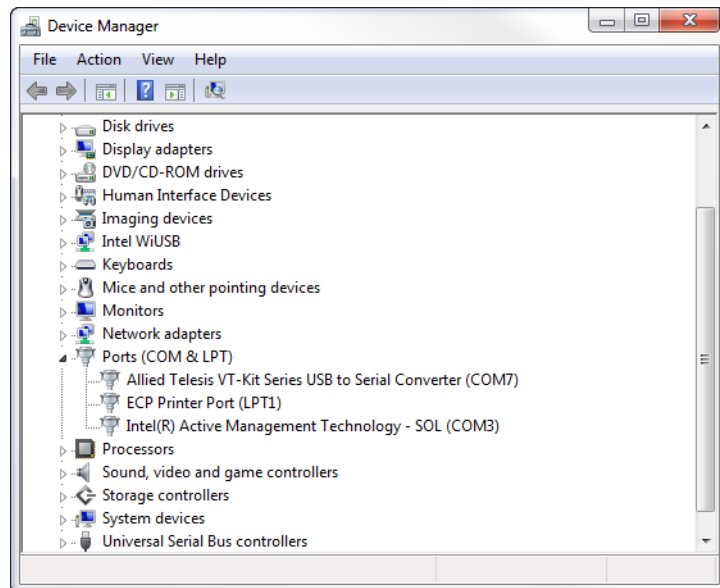


Figure 13. Device Manager

3. Confirm that "Allied Telesis VT-Kit Series USB to Serial Converter (COM *n*)" is there under Ports (COM & LPT).

Chapter 4

Uninstalling the Driver Software

This chapter describes how to uninstall the driver software for the AT-VT-Kit3 management cable.

This chapter contains the following topics:

- ❑ “Overview” on page 32
- ❑ “Uninstalling the Driver Software” on page 33
- ❑ “Confirming the Driver Software is Uninstalled” on page 35

Overview

When you no longer use the AT-VT-Kit3 management cable for your computer, you may want to uninstall the driver software from your operating system.

Guidelines Here are the guidelines for uninstalling the driver software from your system:

- ❑ You must have Administrator privileges to remove the driver software.
- ❑ You *cannot* uninstall the AT-VT-Kit3 driver software using Device Manager on your Windows system. You must use executable file to uninstall the driver software.

Uninstalling the Driver Software

To uninstall the driver software from your operating system, do the following:

1. Start your Windows operating system and log in.
2. Locate the driver software executable file.

If you do not have the file on your system, download one from the ATI website.

Note

To obtain the driver software, see “Downloading the Driver Software” on page 23.

3. Double-click the executable icon.

The Security Warning windows appears in Figure 7 on page 26.

4. Click **Run**.

InstallShield Wizard displays a window as shown in Figure 14.

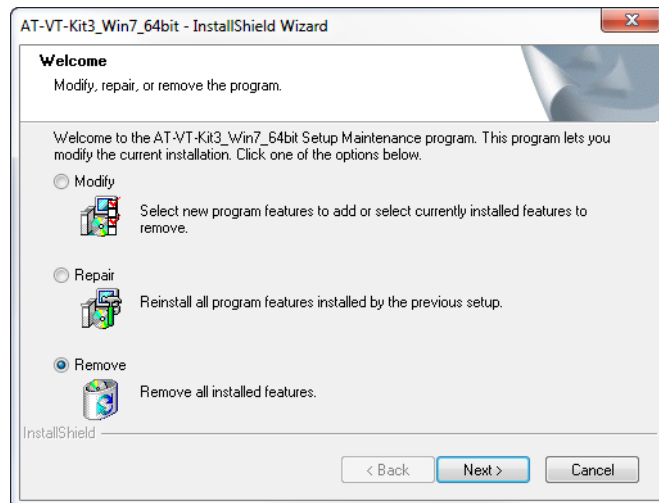


Figure 14. Select a Program

5. Select **Remove** and click **Next**.

The Uninstall Confirmation window appears as shown in Figure 15.



Figure 15. Device Uninstall Confirmation

6. Click **Yes**.

The Uninstall Complete window appears as shown in Figure 16.

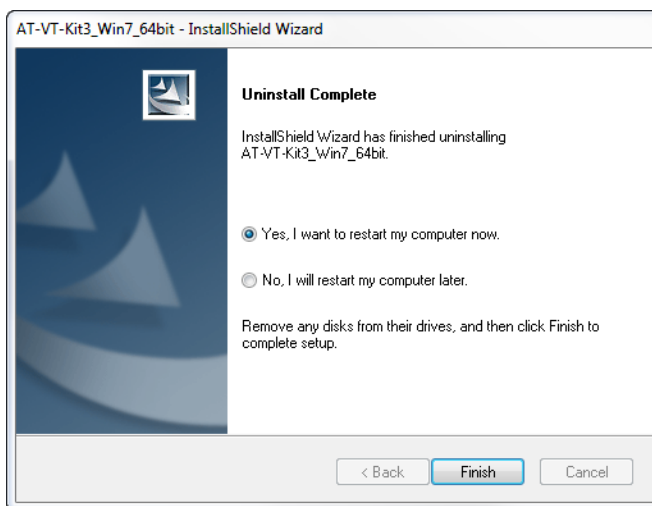


Figure 16. Device Uninstall Complete

7. Click **Finish**.

Confirming the Driver Software is Uninstalled

To confirm if the driver software is successfully uninstalled, do the following:

1. Start your Windows operating system and log in.
2. Open Device Manager in Control Panel. See Figure 17.

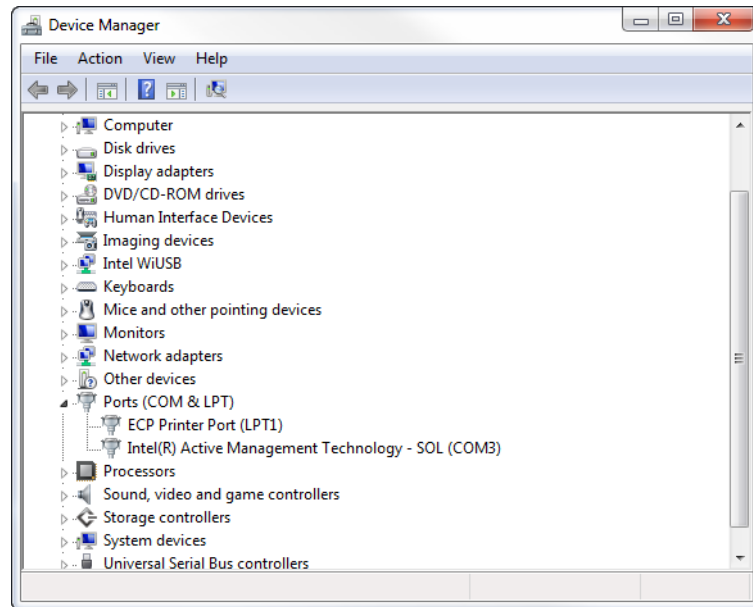


Figure 17. Device Manager

3. Confirm that "Allied Telesis VT-Kit Series USB to Serial Converter (COM *n*)" is no longer there under Ports (COM & LPT).

Appendix A

Specifications

Physical Specifications

Dimensions (L x W x H):	26 mm X 58 mm X 22 mm (1.0 in. x 2.3 in. x 0.9 in.)
Weight:	60 g (2.1 oz)
Cable length:	1.2 m (47.2 in.)

Environmental Specifications

Operating Temperature:	0°C to 40°C (32°F to 104°F)
Storage Temperature:	-20°C to 60°C (-4°F to 140°F)
Operating Humidity:	5% to 85% (non-condensing)
Storage Humidity:	5% to 85% (non-condensing)

RJ-45 Twisted Pair connector

This section lists the RJ-45 connector pinouts for the AT-VT-Kit3 management cable.

Figure 18 illustrates the physical pin layouts of the RJ-45 connector and receptor.

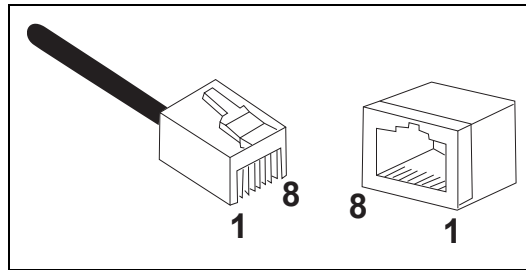


Figure 18. RJ-45 Connector and Receptor Pin Layout

Table 2 lists the pin signals at the RJ-45 connector.

Table 2. Pin Signals

Pin Number	Console RJ-45 Type1	Console RJ-45 Type2	RJ-45
1	RTS	RTS	CTS
2	DTR	Not in Use	DSR
3	TxD	TxD	RxD
4	GND	GND	GND
5	GND	GND	GND
6	RxD	RxD	TxD
7	DSR	Not in Use	DTR
8	CTS	CTS	RTS