

|                  |             |
|------------------|-------------|
| FILE NO.         |             |
| REVISIONS        |             |
| REV. DESCRIPTION | DWN CHK APP |
| 4                | ZAW JDM HA  |
| DATE: 10/19/12   |             |

|                  |             |
|------------------|-------------|
| REV. DESCRIPTION | DWN CHK APP |
| 4                | ZAW JDM HA  |
| DATE: 10/19/12   |             |

|                  |             |
|------------------|-------------|
| REV. DESCRIPTION | DWN CHK APP |
| 4                | ZAW JDM HA  |
| DATE: 10/19/12   |             |

| KIT NO.                                    | PART NO.   | QTY. | DESCRIPTION                    |
|--|------------|------|--------------------------------|
| RSB02<br>(FOR NO. 2 RSL<br>TOWER SECTION)  | RSLF-BW    | 3    | LEG BASE U2.74"X.19"X4.58' HDG |
|  | BK2-TOP    | 3    | TOP HORZ L2X2X.19X2.34' HDG    |
|  | BK2-MID    | 3    | D/AG L2X2X.19X3.92' HDG        |
|  | BK2-BOT    | 3    | BOT HORZ L2X2X.19X2.44' HDG    |
| RSB03<br>(FOR NO. 3 RSL<br>TOWER SECTION)  | 210030GALW | 18   | BOLT ASSY 5/8 X 1-3/4 HSB A325 |
|  | RSLF-BW    | 3    | LEG BASE U2.74"X.19"X4.58' HDG |
|  | BK3-TOP    | 3    | TOP HORZ L2X2X.19X2.58' HDG    |
|  | BK3-MID    | 3    | D/AG L2X2X.19X4.07' HDG        |
| RSB04<br>(FOR NO. 4 RSL<br>TOWER SECTION)  | BK3-BOT    | 3    | BOT HORZ L2X2X.19X2.69' HDG    |
|  | 210030GALW | 18   | BOLT ASSY 5/8 X 1-3/4 HSB A325 |
|  | RSLF-BW    | 3    | LEG BASE U2.74"X.19"X4.58' HDG |
|  | BK4-TOP    | 3    | TOP HORZ L2X2X.19X2.82' HDG    |
| RSB05<br>(FOR NO. 5 RSL<br>TOWER SECTION)  | BK4-MID    | 3    | D/AG L2X2X.19X4.23' HDG        |
|  | BK4-BOT    | 3    | BOT HORZ L2X2X.19X2.93' HDG    |
|  | 210030GALW | 18   | BOLT ASSY 5/8 X 1-3/4 HSB A325 |
|  | RSLF-BW    | 3    | LEG BASE U2.74"X.19"X4.58' HDG |
| RSB06<br>(FOR NO. 6 RSL<br>TOWER SECTION)  | BK5-TOP    | 3    | TOP HORZ L2X2X.19X3.07' HDG    |
|  | BK5-MID    | 3    | D/AG L2X2X.19X4.40' HDG        |
|  | BK5-BOT    | 3    | BOT HORZ L2X2X.19X3.18' HDG    |
|  | 210030GALW | 18   | BOLT ASSY 5/8 X 1-3/4 HSB A325 |
| RSB07<br>(FOR NO. 7 RSL<br>TOWER SECTION)  | RSLF-BW    | 3    | LEG BASE U2.74"X.19"X4.58' HDG |
|  | BK6-TOP    | 3    | TOP HORZ L2X2X.19X3.31' HDG    |
|  | BK6-MID    | 3    | D/AG L2X2X.19X4.57' HDG        |
|  | BK6-BOT    | 3    | BOT HORZ L2X2X.19X3.42' HDG    |
| RSB08<br>(FOR NO. 8 RSL<br>TOWER SECTION)  | 210030GALW | 18   | BOLT ASSY 5/8 X 1-3/4 HSB A325 |
|  | RSLF-AW    | 3    | LEG BASE U2.77"X.25"X4.58' HDG |
|  | BK7-TOP    | 3    | TOP HORZ L2X2X.19X3.56' HDG    |
|  | BK7-MID    | 3    | D/AG L2X2X.19X4.75' HDG        |
| RSB09<br>(FOR NO. 9 RSL<br>TOWER SECTION)  | BK7-BOT    | 3    | BOT HORZ L2X2X.19X3.66' HDG    |
|  | 210030GALW | 18   | BOLT ASSY 5/8 X 1-3/4 HSB A325 |
|  | RSLF-AW    | 3    | LEG BASE U2.77"X.25"X4.58' HDG |
|  | BK8-TOP    | 3    | TOP HORZ L2X2X.19X3.78' HDG    |
| RSB10<br>(FOR NO. 10 RSL<br>TOWER SECTION) | BK8-MID    | 3    | D/AG L2X2X.19X4.92' HDG        |
|  | BK8-BOT    | 3    | BOT HORZ L2X2X.19X3.89' HDG    |
|  | 210030GALW | 18   | BOLT ASSY 5/8 X 1-3/4 HSB A325 |
|  | RSLF-AW    | 3    | LEG BASE U2.77"X.25"X4.58' HDG |

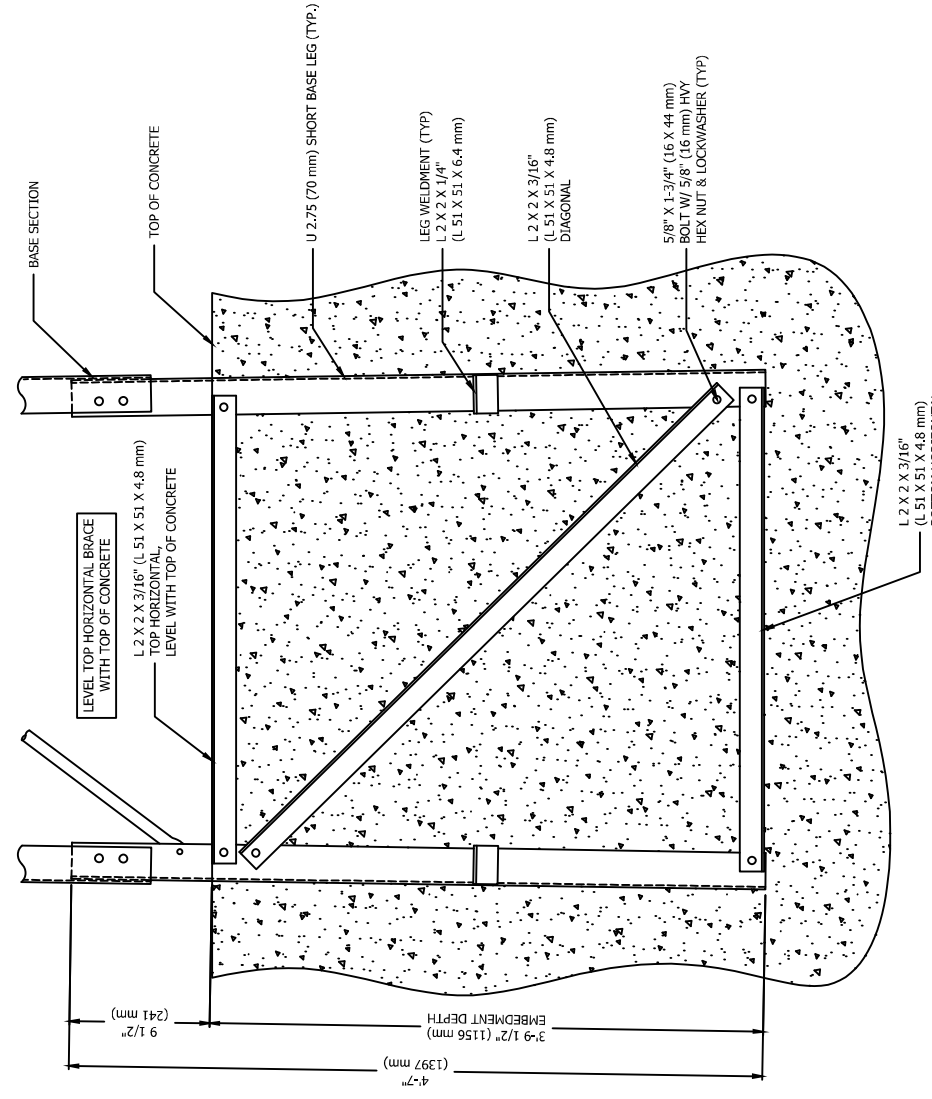
|               |              |                  |
|---------------|--------------|------------------|
| DWN: CEJ      | CHKD: JDM    | DATE: 05/21/2012 |
| ENGR: HA      | SHEET #:     | 1 OF 1           |
| PRI. ENGR: OH | PRI. MANGER: |                  |
| DRAWING NO:   | RSL/SBK      | 4                |



PO BOX 5999  
PEORIA, IL 61601-5999  
TOLL FREE 800-737-ROHN  
FOR WAREHOUSE LOCATIONS

THIS DRAWING IS THE PROPERTY OF ROHN. IT IS NOT TO BE REPRODUCED, COPIED OR TRACED IN WHOLE OR IN PART WITHOUT ROHN'S WRITTEN CONSENT.

RSL TOWER  
SHORT BASE SECTION KITS



TOWER SHORT BASE FOUNDATION KIT DETAILS

NOTES:

1. ALL REINFORCING BARS NOT SHOWN FOR CLARITY.
2. BOLT ASSYS IN B.O.M. CONSIST OF BOLT, SPRING LOCK WASHER, & NUT.
3. NOMINAL METRIC EQUIVALENTS ARE GIVEN FOR REFERENCE ONLY AND SHALL NOT BE SUBSTITUTED FOR THE DESCRIBED SIZES UNLESS OTHERWISE APPROVED BY ROHN PRODUCTS.
4. ALL DIMENSIONS IN PARENTHESES ARE IN METERS, UNLESS OTHERWISE NOTED.