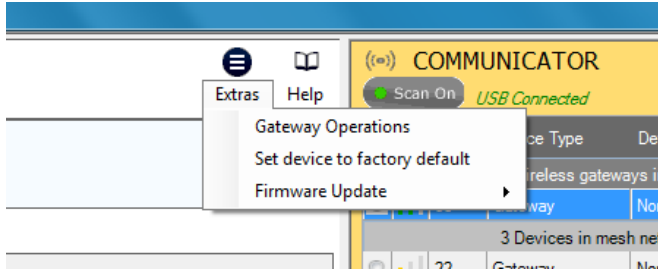
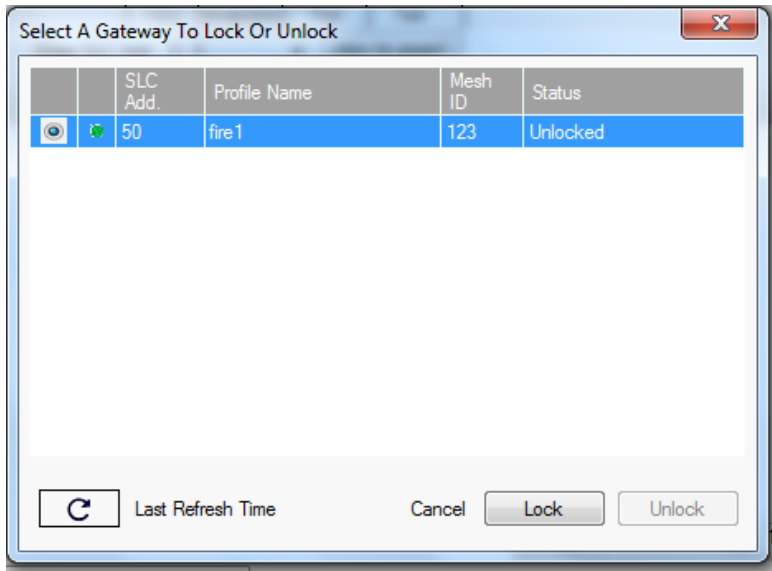


Swift Tools 2.0 contains an enhanced security Gateway Lock feature that must be enabled in certain functions, below is the procedure for locking and more importantly resetting when the password is forgotten.

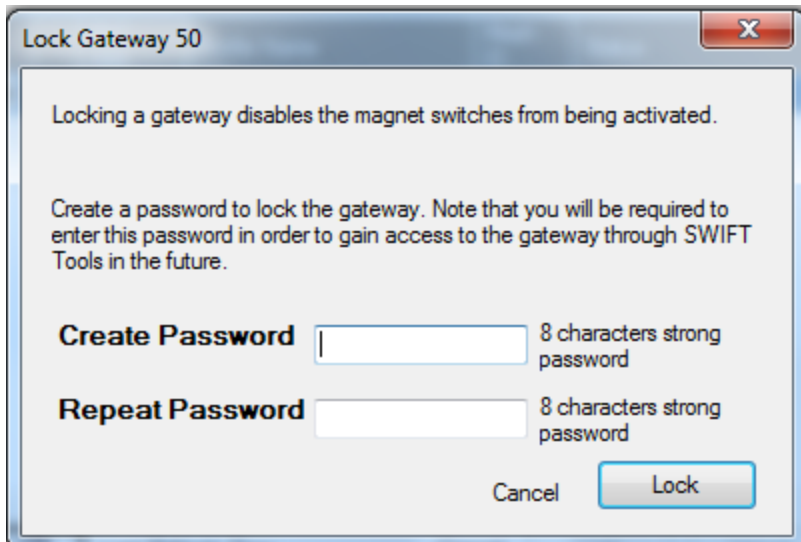
To Lock the Gateway, in the Diagnostics screen choose **Extras** and **Gateway Operations** .



Click on the circle to the left to select the Gateway and Lock.

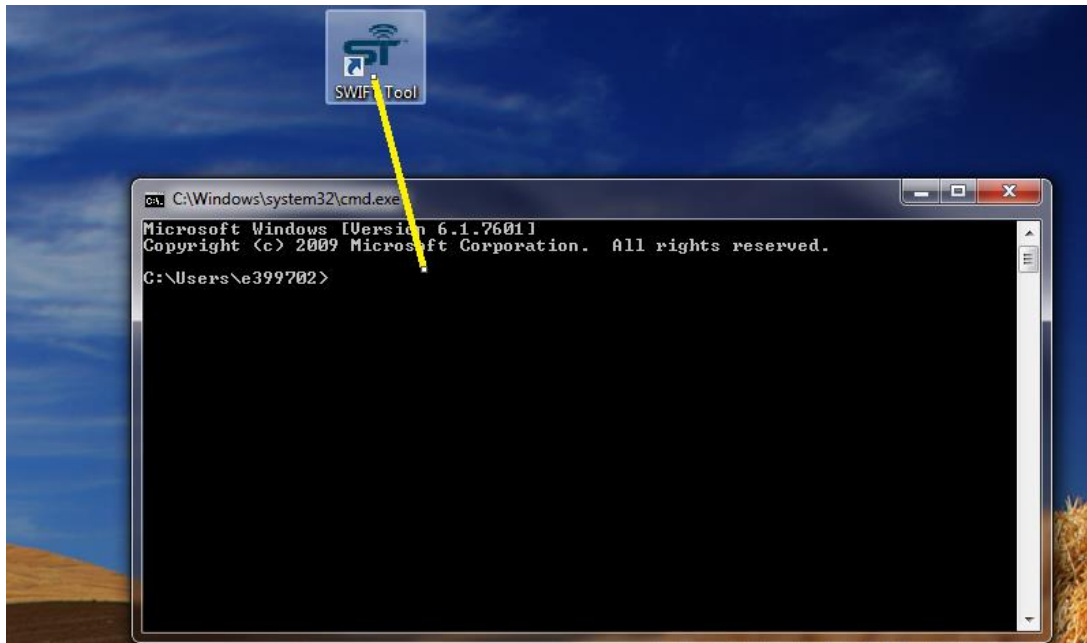


Create a Password, 8 characters, containing upper & lower case letter, number and a special character.

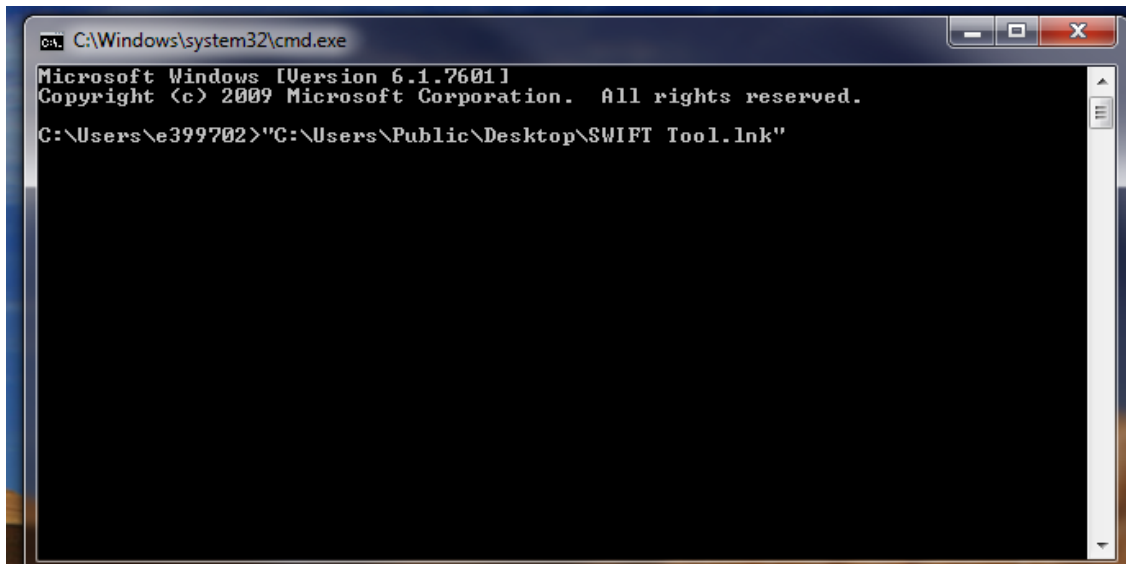


To Reset a forgotten Password proceed as follows:

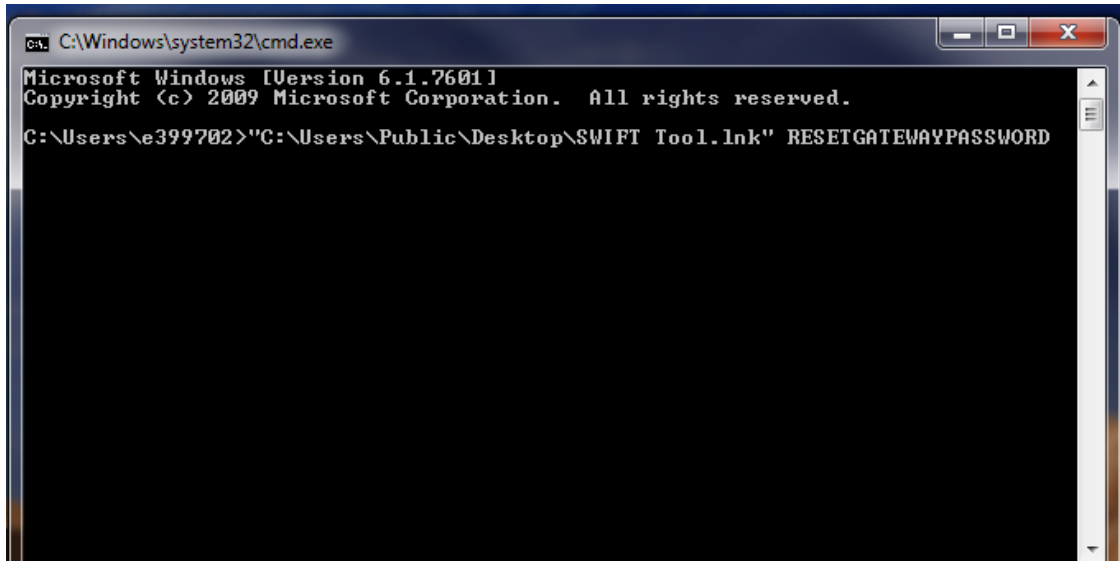
Close Swift Tools, open a Command Prompt, drag the Swift Tools shortcut into the command line.



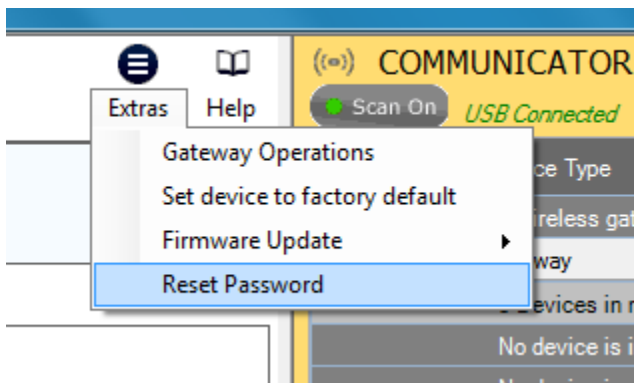
It should look like this



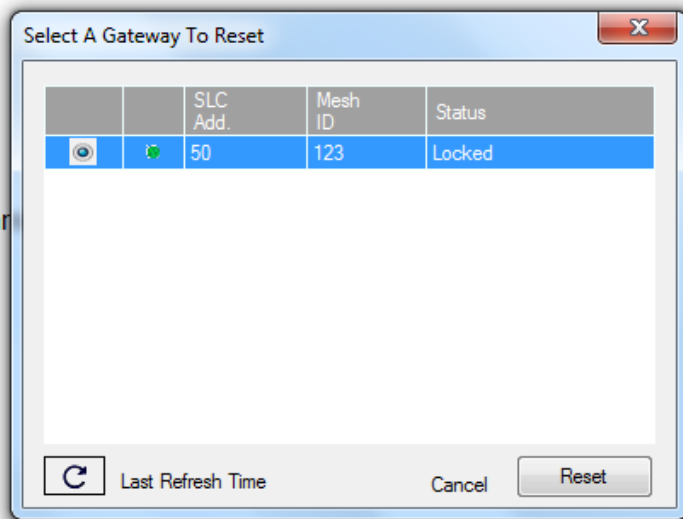
After the link hit a space and type **RESETGATEWAYPASSWORD** (upper case no spaces) and hit **Enter**



Swift Tools will launch, create a new jobsite, and go to the Diagnostics screen, click **Extras\Reset Password**

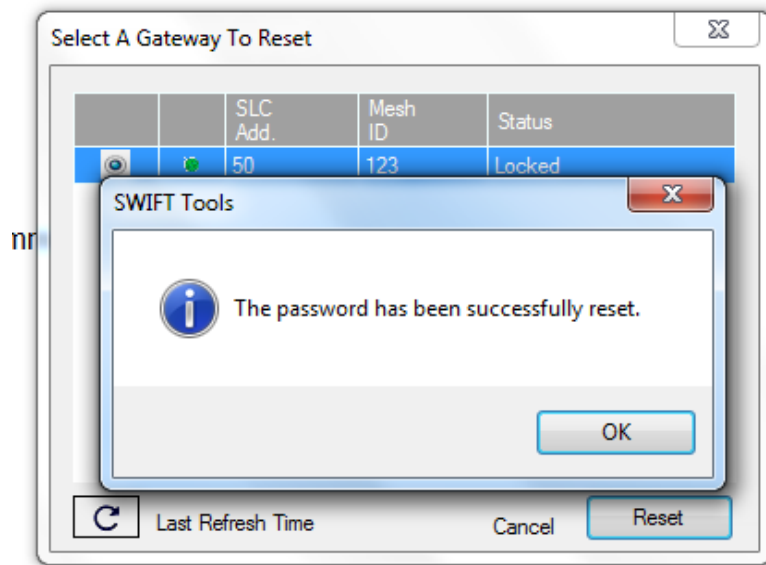


Click the circle next to the Gateway, and

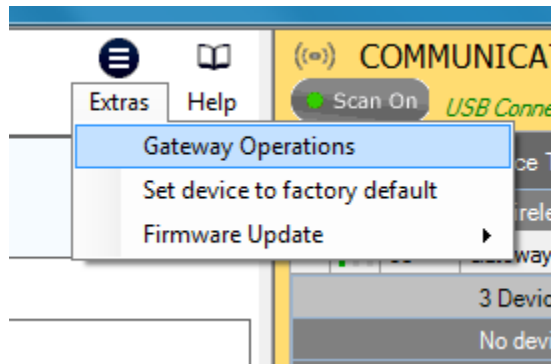


Reset.

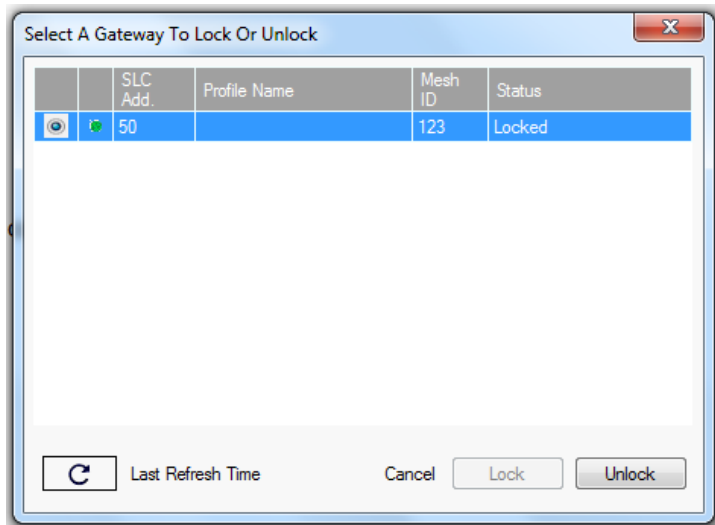
It should show as below.



Click **Extras** and **Gateway Operations**



Select the Gateway and click **Unlock**



Enter the Password **12345678** and click **Unlock**



It should show successfully unlocked.

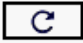
Select A Gateway To Lock Or Unlock

	SLC Add.	Profile Name	Mesh ID	Status
	50		123	Locked

SWIFT Tools

 Selected gateway successfully unlocked.

OK

 Last Refresh Time Cancel Lock Unlock