

AimSafety™ PM₄₀₀ Bump Test & Calibration Station User Instructions




IMPORTANT: Keep these user instructions for reference.

- 1 General Safety Information 3
 - 1.1 List of warnings..... 3
- 2 Use Instructions and Limitations 4
 - 2.1 Use For..... 4
 - 2.2 Features..... 5
 - 2.3 Specifications..... 5
- 3 Operation..... 6
 - 3.1 Power..... 6
 - 3.2 LEDs 6
 - 3.3 Charge Battery..... 6
 - 3.4 Exhaust and Clean Air Intake Ports 6
 - 3.5 Gas Cylinder Installation..... 7
- 4 Testing 7
 - 4.1 Bump Test..... 7
 - 4.2 Calibration 8
 - 4.3 Test Troubleshooting..... 9
 - 4.3.1 Unit LED does not turn on or test is not performed..... 9
 - 4.3.2 All tests fail 9
 - 4.3.3 Test results not stored..... 9
- 5 Station Manager Software 9
 - 5.1 Download and Installation 9
 - 5.1.1 Download the software..... 9
 - 5.1.2 Install the software..... 10
 - 5.2 Connect to the Calibration Station 11
 - 5.2.1 Connect Using PM Link 12
 - 5.2.2 Connect Using USB Disk..... 12
 - 5.3 Use the Software 13
 - 5.3.1 Station Tab..... 13
 - 5.3.2 PM400 Tab..... 16
 - 5.3.3 Logs Tab..... 19
 - 5.3.4 Time Tab 21
- 6 AimSafety Product limited warranty 23
- Technical Support Contact Information 23
- General Contact Information..... 23

1 General Safety Information

1.1 List of warnings

 WARNING
Each person using this equipment must read and understand the information in this user manual before use. Use of this equipment by untrained or unqualified persons or use that is not in accordance with this user manual, may adversely affect product performance.
This equipment may not function effectively below 41°F or above 104°F (5°C or above 40°C). Using the equipment outside of this temperature range may adversely affect product performance.
This equipment helps ensure gas monitors can accurately test for the presence and concentration level of a certain specified airborne gas. Misuse may produce an inaccurate reading, which means that higher levels of the gas being monitored may be present and could result in overexposure and cause serious injury or death. For proper use, see supervisor or User manual, or contact Technical Support at 1-844-325-3050.
Do not disassemble unit or attempt to repair or modify any component of this instrument. This instrument contains no user serviceable parts, and substitution of components may impair product performance.
Using a certified gas with a concentration other than the one listed for this equipment when conducting a calibration verification test (bump test) will produce inaccurate readings. This means that higher levels of the gas being monitored may be present and could result in overexposure. For proper use, see supervisor or User manual, or contact Technical Support at 1-844-325-3050.
The following steps must be performed when conducting a calibration verification test (bump test) to ensure proper performance of the monitor. Failure to do so may adversely affect product performance. <ul style="list-style-type: none"> • When performing a calibration verification test (bump test) only use certified calibration gas at the required concentration level. • Do not test with expired calibration gas. • Do not cover or obstruct display or visual alarm cover. • Ensure sensor inlets are unobstructed and are free of debris Failure to follow instructions outlined in this user manual can result in sickness or death.

2 Use Instructions and Limitations



Figure 2-1 Top View

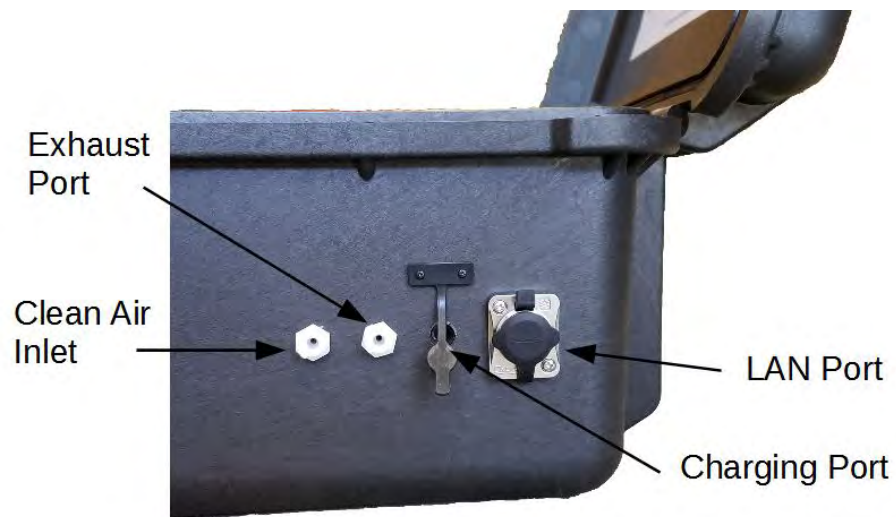


Figure 2-2 Side View

2.1 Use For

The AimSafety Bump/Calibration Station for PM₄₀₀ is an all-in-one testing/calibration station for PM₄₀₀ portable multi-gas monitors. The Bump-Calibration Station utilizes the IR communication of the PM₄₀₀ monitors to perform testing and calibration by pressing only a single button. Operation of the station only requires the use of two buttons. Learning to use the station takes only minutes.

REV – 1.0

[34-2900-0513-1]

4 | Page

It is designed to quickly perform bump tests/calibration for multiple PM₄₀₀ monitors. It can test/calibrate up to four detectors simultaneously, which reduces the testing time and gas usage. The Bump-Calibration Station will work with PM₄₀₀ multi-gas personal monitors.

2.2 Features

- Simultaneously test, configure settings, and update firmware for four PM₄₀₀ gas monitors
- Rechargeable internal battery lasts up to 1000 bump tests on a single charge
- Internal gas cylinder regulator and pressure gauge
- USB flash drive for bump test and event log storage
- Configure settings and update firmware for the station using the Docking Manager software
- Rugged case
- Computer not required for normal operation

WARNING

Each person using this equipment must read and understand the information in this user manual before use. Use of this equipment by untrained or unqualified persons or use that is not in accordance with this user manual, may adversely affect product performance.

2.3 Specifications

- Size: 20.62" x 16.87" x 8.12" (52.4 x 42.8 x 20.6cm)
- Weight: 23 Lbs. (10.4kg) Without cylinder
- Operating Temperature: 41° to 104°F (5° to +40°C)
- Warranty: 2-years
- Battery Type: Rechargeable Lithium Ion
- Battery life: ~1000 Bump Tests
- LEDs: 6 blue LEDs for each bay, 1 red/orange/green LED for power indicator
- Memory: USB 8GB Standard
- Log Capacity: Approximately Up to 10 million tests (with 8GB removable USB memory)
- Functions performed: Bump Test and Calibration
- Information Stored: Bump/Cal Logs, Individual Monitor Event Logs, Firmware and Unit Configurations
- Gases Available: 4-gas mix (CH₄, CO, H₂S, O₂)
- Gas Cylinder: Compatible with 58L, 103L, and 116L cylinders with C10 fittings
- Charging Adaptor: 12V DC @ 3A

3 Operation

The Bump-Calibration Station is operated using only two buttons.

3.1 Power

To turn on the power,

1. Press either the **Bump Test** or the **Calibration** button for two seconds.
2. The Power LED will initially turn on to orange, then switch to green when the unit is ready. If the unit has a low battery, the power LED will switch to red.
3. If the USB is full or is not detected, the power LED will initially flash orange for five seconds.











To turn off the power,

1. Press and hold the **Bump Test** and **Calibration** button simultaneously for two seconds.
2. The power LED will shut off indicating the unit has been switched to sleep mode.

NOTE: The unit will automatically switch to sleep mode after 5 minutes of inactivity.

3.2 LEDs

There are LEDs on the Bump-Calibration Station which indicate the operation status. A single multi-colored Power LED indicates the power status. Each unit bay has 6 blue LEDs which indicate the status of each bay.

LED	Color	Description
Bay LEDs		1 LED: Stand by
		2 LED: Injecting fresh air
		3 LED: Testing (Bump or Calibration)
		4 LED: Purging remaining gas
		5 LED: Save log data
		6 LED: Test pass
		Third LED On (flashing): Test failed
Power LED		Green: Power On
		Red: Low Battery
		Orange: No USB or USB Storage Full

3.3 Charge Battery

The charging port is located on the right side of the unit. The unit comes with a DC adapter which can be used to charge the unit using a 110V power supply. A full charge will take approximately 3 hours and will last for approximately 1000 bump tests.

3.4 Exhaust and Clean Air Intake Ports

There are two ports located on the right side of the station next to the charging port (see Figure 2–2 Side View).

The clean air intake port is nearest to the front of the station. During an active test, the station will draw clean air in through the clean air intake port. Optionally, tubing can be attached to the clean air intake port using the included

twist connector to draw clean air from a suitable location or a cylinder of “Zero Air” (20.9% O₂) with a “demand flow” type regulator.

The exhaust port is the port between the clean air port and the charging port. During an active test, the used test gas will exit the unit through the exhaust port. Optionally, tubing can be attached to the exhaust port using the included twist connector to direct the used test gas to a suitable location.

It is recommended to use the exhaust port and the rubber stoppers. This will help limit potential exposure to the user.

3.5 Gas Cylinder Installation

Gas cylinders are available in single gas and multi-gas concentrations. They must have the C10 fitting on them. Gas cylinders are available through local distribution or from AimSafety.

To install a new gas cylinder,

1. Loosen the two thumbscrews located between the handle and the edge of the case.
2. Lift the handle to open the gas cylinder compartment.
3. Attach the cylinder to the gas regulator by threading the bottle into the fitting until tight.
4. Secure the cylinder with the three cylinder straps.
5. Close the cylinder compartment.
6. Check the pressure gauge to confirm adequate pressure.
7. Tighten the two thumbscrews.

The Gas Expiration date and Gas Bottle Lot # can be recorded using the Bump-Calibration Station Manager software (See Section 5.3.1.1 Station Info).

4 Testing

Place up to four PM₄₀₀ monitors (monitors must be powered on) in the bays for testing. The Bump-Calibration Station can test and calibrate for different gas types at the same time when using a multi-gas cylinder.

Every test (Bump test and Calibration) can also automatically perform the following optional operations (See Section 5.3.1.2 Enable/Disable Function):

- Upgrade each monitor’s firmware (if required)
- Test each monitor’s audible alarm (Bump test only)
- Configure each monitor’s user options (as required)
- Download each monitor’s Event, Bump, and Calibration logs and save them to the USB memory
- Record the test to the USB memory

NOTE: All empty bays should have a rubber cap installed before a test can be performed. Without the rubber cap installed, exhaust test gas will leak out of the empty bay.

4.1 Bump Test

All monitors need to be periodically tested with a known concentration of gas to verify the sensor is responding correctly to the target gas. This test is called a bump test. The system can be configured for “Beep”, “Concentration”, or “Beep + Concentration” tests. The default is “Beep” and can be changed using the software (see the heading **Bump Result Decision** in section 5.3.1.2 for more information about each test).

To perform a bump test,

1. Remove the rubber cap for the unit bay. Place the monitor face down into the bay. Press down on the monitor until it locks into place.
2. With the Bump-Calibration Station powered on, press the Bump Test button for two seconds to start the test.
3. The unit LEDs will begin to light up as the test progresses. A bump test will take approximately 20 seconds.
4. When the test is complete, all six unit LEDs will be lit for a successful test. If the test fails, the third LED will flash (see Figure 4–1 LED pattern indicates test pass or fail).
5. To remove the monitor from the bay, slide the locking mechanism (lower left side of each unit bay) to the left and lift the monitor. Replace the rubber cap for the unit bay.

NOTE: Any monitors that fail a bump test will require calibration before use.



Figure 4–1 LED pattern indicates test pass or fail

4.2 Calibration

Calibration is the process of adjusting the sensor’s response by using a specific concentration of calibration gas. Sensors will lose accuracy over time for a variety of reasons. Therefore, it is important to perform a full calibration periodically to ensure the sensors response to the target gas are accurate.

The PM₄₀₀ Bump-Calibration Station performs a “Fresh Air” and “Span Calibration”.

To perform a calibration,

1. Remove the rubber cap for the unit bay. Place the monitor face down into the bay. Press down on the monitor until it locks into place.
2. With the Bump-Calibration Station powered on, press the calibration button for two seconds to start the test.
3. The unit LEDs will begin to light up as the test progresses. The calibration will take approximately 90 seconds.
4. When the calibration is complete, all six unit LEDs will be lit for a successful test. If the test fails (see Figure 4–1 LED pattern indicates test pass or fail), the third LED will flash.

5. To remove the monitor from the bay, slide the locking mechanism (lower left side of each unit bay) to the left and lift the monitor. Replace the rubber cap for the unit bay.

NOTE: Do not use a monitor that fails a calibration.

4.3 Test Troubleshooting

4.3.1 Unit LED does not turn on or test is not performed

- Clean monitor IR window
- IR interference (bright lights/sunlight)
- Monitor in gas alarm state

4.3.2 All tests fail

- Gas cylinder empty – Check pressure gauge. Gas pressure should read at least 100 psi for proper operation.
- Gas Expired – Gas expiration date is located on the gas cylinder.
- Wrong gas concentration(s).
- Wrong gas type.
- If a monitor fails 3 consecutive test attempts, please contact AimSafety Technical Support.

4.3.3 Test results not stored

- USB drive not installed or corrupted – Power LED will flash orange for five seconds during startup.
- USB drive full – Power LED will flash orange for five seconds during startup.

5 Station Manager Software

The Bump-Calibration Station Manager software is used to configure the Bump-Calibration Station. The software can make changes to the Bump-Calibration Station settings using a PM Link device or the included USB Disk.

Not all software features are available when using the USB Disk. The table below shows the available features:

Feature	Available with PM Link?	Available with USB Disk?
PM ₄₀₀ configuration	Yes	Yes
Update PM ₄₀₀ firmware files	Yes	Yes
Update Bump-Calibration Station firmware files	Yes	Yes
Add test gas information	Yes	Yes
Retrieve log files	Yes	Yes, using file explorer
Set time and date	Yes	No

5.1 Download and Installation

5.1.1 Download the software

Download the Bump-Calibration Station Manager software from the following link:

<https://www.macurco.com/?ddownload=2090>

Save the file to a place you will remember.

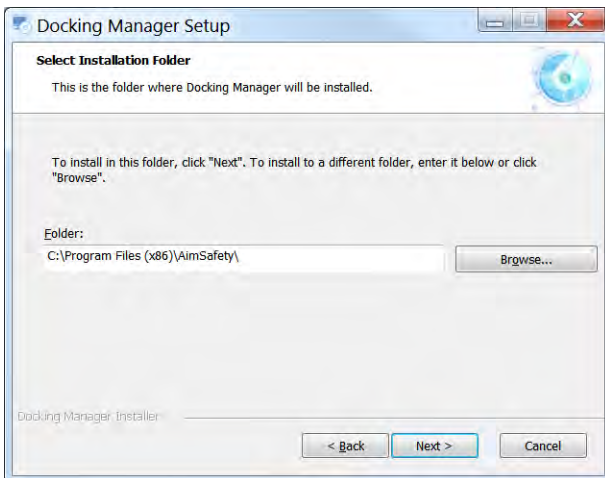
5.1.2 Install the software

To install the software,

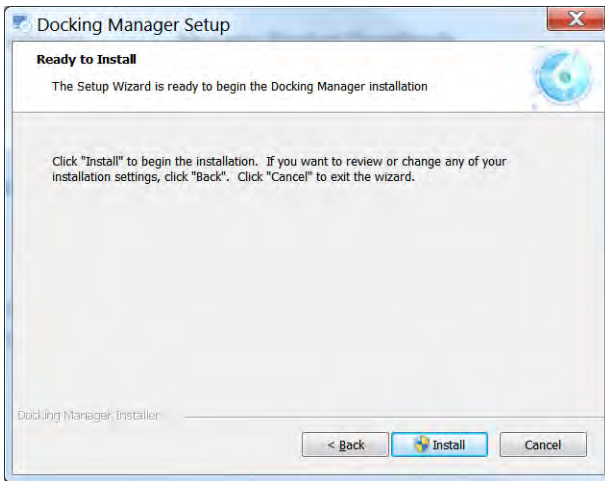
1. Navigate to the saved file.
2. Double-click the file to run the installer.
3. You may receive a security warning. Click **Run** or **Run Anyway** to continue with the installation.
4. The Docking Manager Setup wizard will start. Click **Next**.



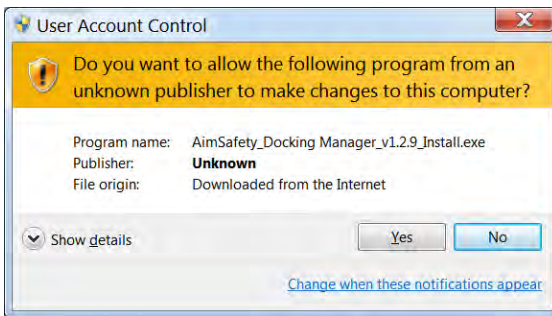
5. Now select the installation folder. The default folder is the best option for most people. Click **Next**.



6. The installation is ready to begin. Click **Install**.



7. You may receive a warning. Click **Yes** to continue.



8. When the installation is complete, click **Finish** to exit the Setup Wizard.



5.2 Connect to the Bump-Calibration Station

When the Bump-Calibration Station Manager software is first opened, the fields are grayed out. The software must be connected to the Bump-Calibration Station before it can be used. There are two methods to connect the software to the Bump-Calibration Station: A PM Link or the included USB Disk can be used.

5.2.1 Connect Using PM Link

The Bump-Calibration Station can be conveniently configured using the PM Link device. The station can communicate with the PM Link device using the IR communication in Unit 1 bay.

To connect using the PM Link,

1. Plug the PM Link device into a USB port on your computer.
2. Place the PM Link device in Unit 1 bay with the IR lens of the PM Link facing the IR lens of the Unit 1 bay (see Figure 5–1 PMLink placement).
3. Make sure the Bump-Calibration Station power is on indicated by the green Power LED.
4. Open the Bump-Calibration Station Manager software.
5. Make sure the “IR” option at the top of the software interface is selected.
6. Press **OPEN** in the upper right corner of the software interface.
NOTE: If the software is opened before the PM Link device is plugged into the computer, a “Port open fail” message may popup. If this occurs, close the software and reopen it.
7. The communication light on the PM Link device will begin to flash rapidly.
8. After several seconds, the current Bump-Calibration Station settings will be displayed on the interface and a “Read complete” message will be displayed.

If the PM Link device fails to communicate with the Bump-Calibration Station after 20 seconds, a “Send timeOut” message will be displayed. Check to make sure the Bump-Calibration Station power is on, and that the PM Link IR screen is aimed at the IR screen of Unit 1 bay.

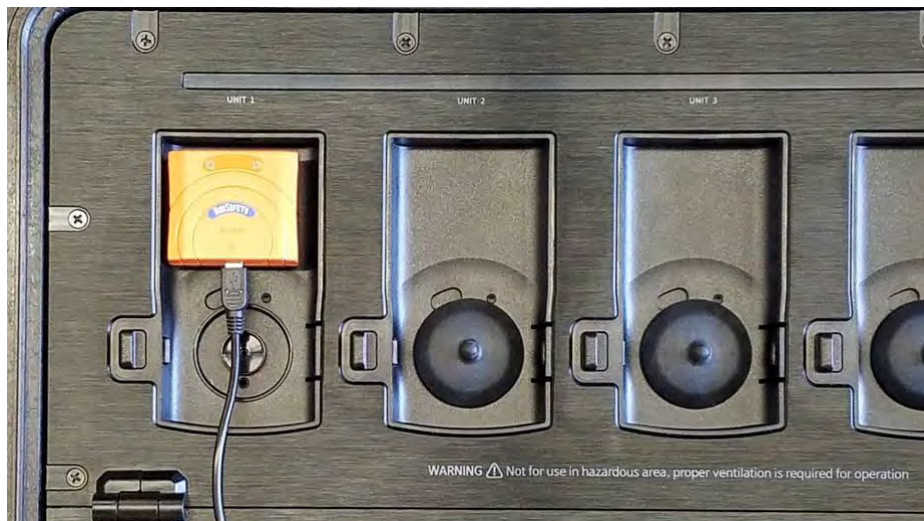


Figure 5–1 PMLink placement

5.2.2 Connect Using USB Disk

Alternatively, the Bump-Calibration Station can be configured using the included USB Disk. The USB Disk will need to be removed from the Bump-Calibration Station and plugged into a USB port on the computer.

To connect the USB Disk to the Bump-Calibration Station Manager software,

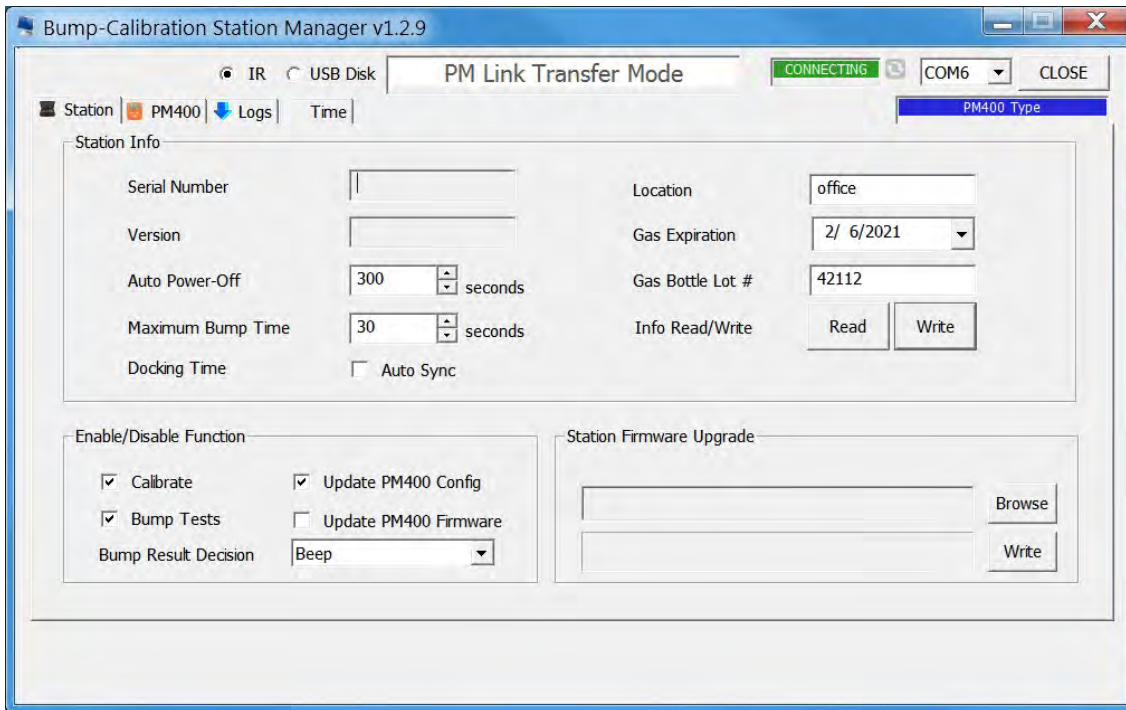
1. Turn off the power to the Bump-Calibration Station by pressing the Bump Test and Calibration buttons simultaneously.

2. Remove the two thumbscrews located between the edge of the case and the handle.
3. Lift the handle to open the gas cylinder compartment.
4. The USB Disk is located on the right side of the bottom of the compartment. Remove the USB Disk by simply pulling it out.
5. Plug the USB Disk into a USB port on your computer.
6. Open the Bump-Calibration Station Manager software.
7. Select the USB Disk option at the top of the software interface.
8. Navigate to the location of your USB Disk. Click **OK**.

5.3 Use the Software

Once connected, the software interface will display the current settings of the connected Bump-Calibration Station and fields that can be edited will no longer be grayed out. It should look similar to the image below.

NOTE: The Logs and Time tabs will not be available if connected using the USB Disk.



5.3.1 Station Tab

The Station tab is displayed when the software opens (as shown above). It shows information about the Bump-Calibration Station, information about the installed gas cylinder, configuration of the operation of the Bump-Calibration Station, and the Bump-Calibration Station firmware upgrade interface.

NOTE: No changes will be saved to the Bump-Calibration Station until the **Write** button is pressed (see 5.3.1.1).

5.3.1.1 Station Info

Serial Number – Cannot be changed. It uniquely identifies the Bump-Calibration Station unit.

Version – The firmware version installed on the Bump-Calibration Station.

Auto Power-off – Determines the idle time before the Bump-Calibration Station automatically switches to sleep mode. Can be set from 1-3600 seconds. Default is 300 seconds.

Maximum Bump Time – Determines the maximum time allowed for a Bump Test. If the PM₄₀₀ device fails to properly respond before the time expires, the test will stop, and the device will fail the test. Can be set from 20-120 seconds (default is 20 seconds).

Docking Time Auto Sync – If checked, the time on the Bump-Calibration Station will be synced to the computer time. If unchecked, the time can be manually adjusted within the Time tab.

Location A custom location can be added up to 12 alphanumeric characters. This can be useful to keep data from multiple Bump-Calibration Stations organized.

Gas Expiration – Displays the expiration date of the installed gas cylinder. Update this field when a new gas cylinder is installed. Gas expiration date can be found on the gas cylinder.

Gas Bottle Lot # - Displays the lot number of the installed gas cylinder. The gas cylinder lot number can be found on the gas cylinder. Update this field when a new gas cylinder is installed.

Info Read/Write – Press **Read** to download and display the current settings of the Bump-Calibration Station. Pressing Read will discard any unsaved changes in the Station tab. Press **Write** to upload the settings currently displayed on the software to the Bump-Calibration Station. No changes will be saved to the Bump-Calibration Station until the **Write** button is pressed.

5.3.1.2 Enable/Disable Function

When the Bump-Calibration Station performs a bump test or calibration on a PM₄₀₀ device, it can optionally perform other maintenance tasks simultaneously.

Calibrate – If the Calibrate box is unchecked, the calibrate function of the Bump-Calibration Station will be disabled. With the calibrate function disabled, pressing the Calibrate button will not calibrate the monitor, but it will update configuration or firmware if the option is enabled. The power LED will turn orange for 5 seconds, then return to green.

Bump Tests – If the Bump Tests box is unchecked, the Bump Test function of the Bump-Calibration Station will be disabled. With the Bump Test function disabled, pressing the Bump Test button will not test the monitor, but it will update configuration or firmware if the option is enabled. The power LED will turn orange for 5 seconds, then return to green.

Update PM400 Config – If this box is checked, the Bump-Calibration Station will update the PM₄₀₀ configuration settings (See Section 5.3.2.1 PM400 Configuration Options) when the Bump Test or Calibration button is pressed.

Update PM400 Firmware – If this box is checked, the Bump-Calibration Station will upgrade the PM₄₀₀ firmware when the Bump Test or Calibration button is pressed. It is not necessary to upgrade the PM₄₀₀ firmware every time the monitor is tested. It is only necessary when a newer version of the firmware is available. To update the firmware file saved on the Bump-Calibration Station, see Section 5.3.2.4 PM400 Firmware Upgrade.

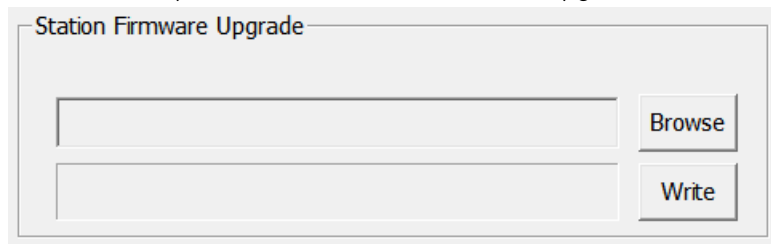
Bump Result Decision – The dropdown list is selectable for “Beep”, “Concentration”, or “Beep + Concentration”.

The “Beep” option will run the bump test until the alarm condition is met and the audible alarm is detected.

The “Concentration” option will run the bump test until the test gas concentration is verified. If the units are in Stealth Mode, the Concentration option will be required for a successful bump test.

The “Beep + Concentration” option will run the bump test until the audible alarm is detected and the test gas concentration is verified.

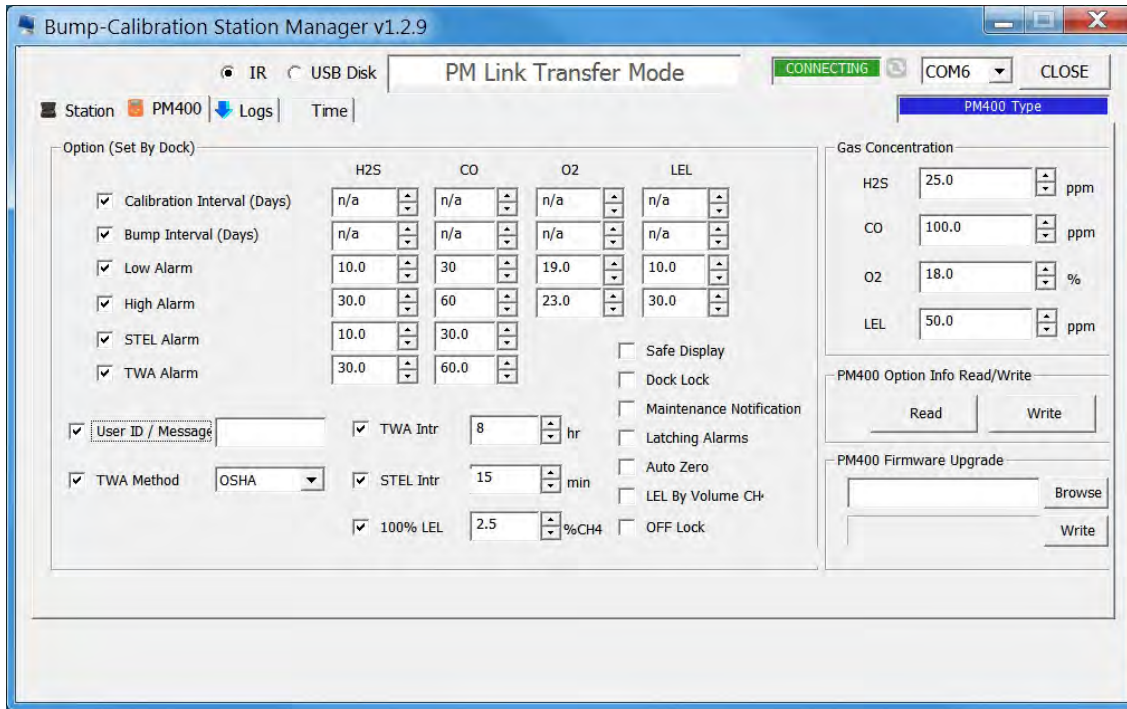
5.3.1.3 Bump-Calibration Station Firmware Upgrade



To upgrade the Bump-Calibration Station firmware,

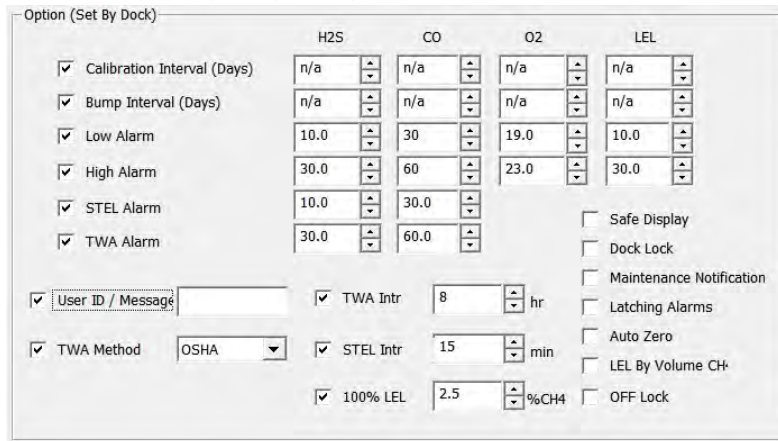
1. Click **Browse**.
2. Navigate to the location of the firmware file.
3. Click **Open**.
4. The software interface will show the file path of the new firmware in the Station Firmware Upgrade field. Click **Write** to write the new firmware to the Bump-Calibration Station.

5.3.2 PM400 Tab



The Bump-Calibration Station and Bump-Calibration Station Manager software can be used to quickly make configuration changes for multiple PM₄₀₀ detectors. The PM₄₀₀ tab in the Bump-Calibration Station Manager software shows the available configuration options for PM₄₀₀ devices. All configuration settings can be set to be simultaneously updated during each bump test or calibration (see Section 5.3.1.2 Enable/Disable Function).

5.3.2.1 Option (Set By Dock)



Each of the following configuration options can be enabled/disabled using the checkbox on the left side.

For options with user configurable settings (all options except for the 7 check boxes in the lower right of the image above), disabling the option will not disable the feature in the PM₄₀₀ monitor. It will only prevent the Bump-Calibration Station from changing the existing setting in each PM₄₀₀ monitor.

Note: Although the software will perform a “Read” operation when opening, If the device is not in place, the “Read” operation may need to be performed once the software is opened to display the configuration of the device.

Calibration Interval (Days) – The Calibration reminder can be configured from n/a (Off) to 365 days.

Bump Interval (Days) – The Bump Test reminder can be configured from n/a (Off) to 365 days.

Low Alarm – This is the first (low for O₂) set point that activates the monitor’s alarms.

High Alarm – This is the second (high for O₂) set point that activates the monitor’s alarms.

STEL Alarm – Short Term Exposure Limit alarm uses the average level of concentration of each gas for the past 15 minutes to determine the alarm state.

TWA Alarm – Time Weighted Average uses the average level of concentration of each toxic gas for the past eight hours to determine the alarm state.

User ID – The User ID field can be used to add a custom message.

TWA Method – Determines the method for calculating the TWA Alarm. Either OSHA or ACGIH can be selected.

TWA Intr – Determines the time period for calculating the time weighted average. Valid settings are 4-16 hours.

STEL Intr – Determines the time period for the Short Term Exposure Limit. Valid settings are 5-15 minutes.

100% LEL - Valid settings are 1.0-50.0%CH₄.

Safe Display – If checked, the display of the monitor will read “SAFE ZONE” unless gas concentrations exceed an alarm setpoint. Should this happen, alarms will activate normally.

Maintenance Notification - Check the box to enable the Calibration and Bump Test Due notifications.

Latching Alarms – If checked and an alarm is triggered, the alarm will stay on until the user resets the monitor. If unchecked, the monitor will return a normal state once the gas concentration returns below the alarm set point.

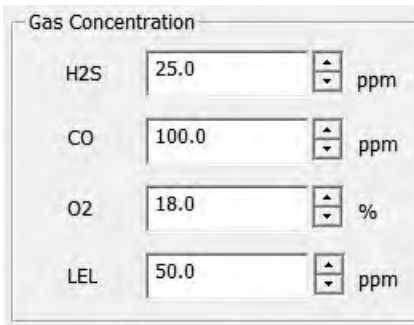
Auto Zero - The Auto Zero option sets the sensors to fresh air during the power-on sequence.

NOTE: The detector must only be turned on in a known safe environment with this feature enabled.

LEL By Volume CH₄ - Check the box to enable a custom setting (see 100% LEL option above) for the 100% LEL setting. If this box is left unchecked, the 100% LEL setting will use the default value of 5%.

OFF Lock - Check OFF Lock to prevent the monitor from being turned off. If a user tries to power off the monitor with Off Lock engaged, the screen will flash “OFF LOCK” and continue operating normally.

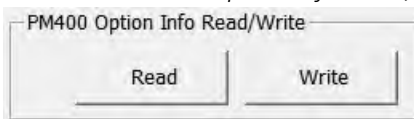
5.3.2.2 Gas Concentration



Gas	Concentration	Unit
H2S	25.0	ppm
CO	100.0	ppm
O2	18.0	%
LEL	50.0	ppm

This field allows you to enter the gas concentration(s) of the test gas cylinder installed in the Bump-Calibration Station. This is necessary for proper testing and calibration of PM₄₀₀ monitors. There are fields available for H2S, CO, O2, and LEL.

5.3.2.3 PM400 Option Info Read/Write



Function
Read
Write

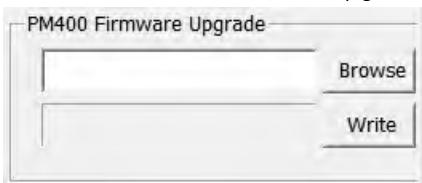
IMPORTANT: Any changes made to the PM400 tab will not be saved to the Bump-Calibration Station until the **“Write”** button is clicked.

To write the data from the PM400 tab to the Bump-Calibration Station, press **Write**.

To read the current PM₄₀₀ configuration options saved in the Bump-Calibration Station, press **Read**.

NOTE: Pressing **Read** will cause any unsaved changes on the PM400 tab to be lost.

5.3.2.4 PM400 Firmware Upgrade



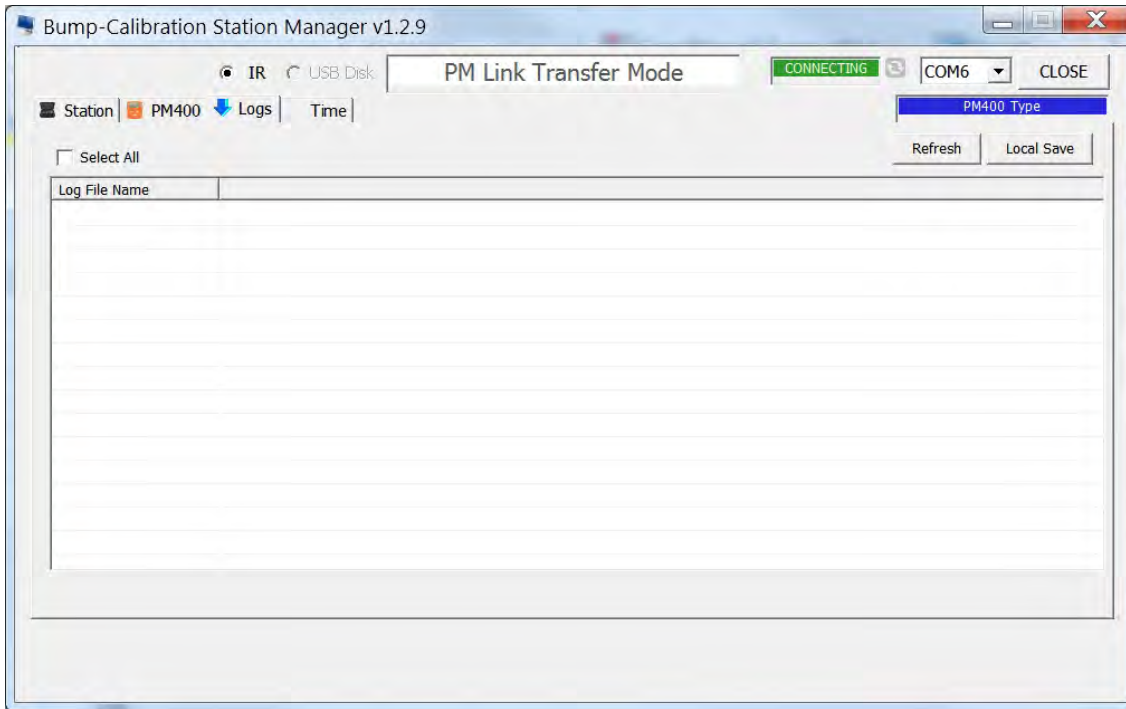
Field	Action
File Selection	Browse
Write	Write

The Bump-Calibration Station can be used to upgrade the PM₄₀₀ firmware. The Bump-Calibration Station can keep a copy of the PM₄₀₀ firmware saved on its USB Disk. If there is a new firmware version, the file can be found at <https://macurco.com/downloads/>.

To update the PM₄₀₀ firmware file,

1. Press **Browse** to open the file explorer.
2. Navigate to the PM₄₀₀ firmware file.
3. Press **Open**.
4. Press **Write**. The PM₄₀₀ firmware file will be saved to the USB Disk of the Bump-Calibration Station.

5.3.3 Logs Tab



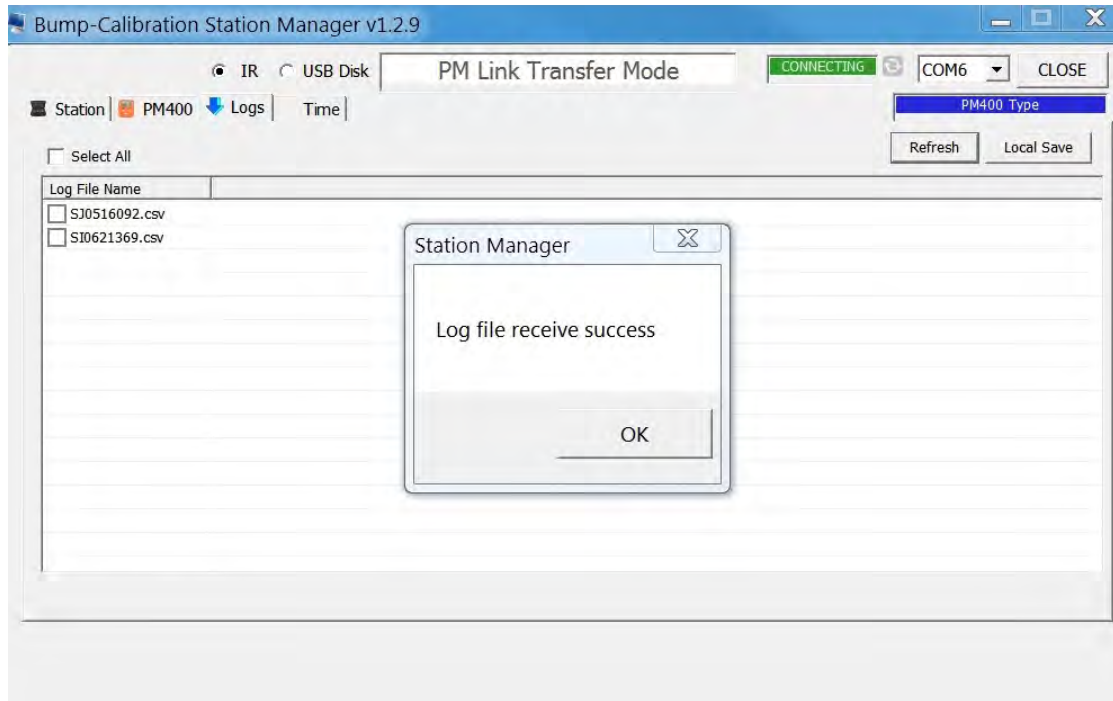
Logs are stored on the USB Disk and can be viewed on a computer using the Bump-Calibration Station Manager software. The log files will be formatted as .csv files (comma separated values) for easy viewing and manipulation with spreadsheet software. A log file will be created for each PM₄₀₀ monitor used in the Bump-Calibration Station. A single log file will be created for the Bump-Calibration Station.

NOTE: The Logs tab is not available if connected via USB Disk. Instead, the log files can be viewed and saved directly by navigating to the “Logs” folder in the USB Disk.

5.3.3.1 View Log Files

To view a list of the log files, click **Refresh** while connected to the Bump-Calibration Station. The log file names will appear in the list box and a “Log file receive success” message will pop-up when the list is complete. Log file names are based on the serial number of the device.

PM400 Bump Test and Calibration Station



5.3.3.2 Save Logs to Computer

The log files can be saved to the computer.

To save the log files to the computer,

1. Select the desired log files to save. Click the **Select All** check box to select or deselect all log files at once. Individual log files can be selected by clicking on their respective check box.
2. Click **Local Save**.
3. A Browse window will open. **Navigate** to the desired save location. If saving many log files, it may be advisable to create a folder for the log files.
4. Press **OK**. The download will start.
5. When the download is complete, a “Log data save success” message will pop-up.

5.3.3.3 Log Information

The log files are saved in a .csv file format. They can be opened by any spreadsheet software.

Each time a test is performed, a log similar to the image below will be created in the Bump-Calibration Station log file.

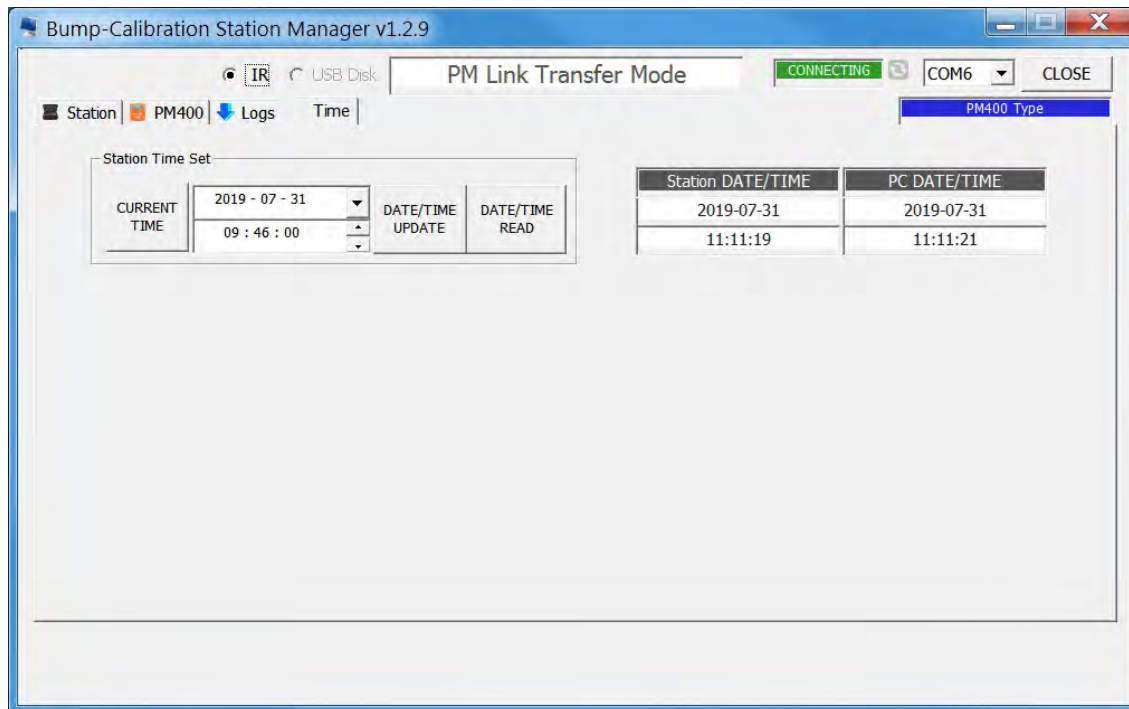
	A	B	C	D	E	F	G	H
1	Log Time	7/31/2019 10:59						
2	Docking Serial Number	SJ0516092						
3	F/W Version	1.0.2						
4	H/W Version	2.1.1						
5	Place							
6	Gas Expiration Date	2020.1.1						
7	Gas Bottle Lot							
8								
9	Bay Num	Model	Test Type	Test Result	S/N	F/W Versi	H/W Versi	User ID
10		1 PM400	Bump	FAILURE	SI0621369	0.1.8	2.1.0	
11		2 PM400	Bump	FAILURE		0.1.8	2.1.0	

PM400 Bump Test and Calibration Station

Each PM₄₀₀ monitor that is tested using the Bump-Calibration Station will generate its own log file. The log file shows entries for events, bump tests, and calibration tests. The image below shows the information in a sample log file.

	A	B	C	D	E	F	G	H	I	J	K	L	M	N	O	P
1																
2																
3	Event Log															
4	Date/Time	Duration	H2S(C)	H2S(S)	CO(C)	CO(S)	O2(C)	O2(S)	LEL(C)	LEL(S)	Serial Num	User Message				
5	2018.08.26 06:05:17	0:00:05	0		0		19.4	Low Alarm	0		SI0621369					
6	2018.08.29 01:52:38	0:00:40	0		0		19.4	Low Alarm	0		SI0621369					
7																
8																
9	Bump Log															
10	Date/Time	Beep	H2S(C)	H2S(A)	H2S(S)	CO(C)	CO(A)	CO(S)	O2(C)	O2(A)	O2(S)	LEL(C)	LEL(A)	LEL(S)	Serial Num	User Message
11																
12																
13	Calibration Log															
14	Date/Time	Cal Type	H2S(C)	H2S(S)	CO(C)	CO(S)	O2(C)	O2(S)	LEL(C)	LEL(S)	Serial Num	User Message				
15	2000.02.23 22:17:20	Span Cal	25	Pass	100.1	Pass	24.4	Fail	50	Pass	SI0621369					
16	2000.02.25 19:11:31	Span Cal	0	Fail	3.8	Fail	20.9	Fail	0	Fail	SI0621369					
17																

5.3.4 Time Tab



The Bump-Calibration Station adds time data to all its logs. If the Bump-Calibration Station time is incorrect, it can easily be updated to the correct time using the Bump-Calibration Station Manager software. The time can only be set when connected using the PM Link.

5.3.4.1 Station Time Set

The image shows a software interface titled "Station Time Set". It contains a table with two rows and two columns. The first row shows the date "2019 - 03 - 07" and a dropdown arrow. The second row shows the time "14 : 37 : 17" and another dropdown arrow. To the right of the table are two buttons: "DATE/TIME UPDATE" and "DATE/TIME READ".

CURRENT TIME	DATE/TIME
2019 - 03 - 07	DATE/TIME UPDATE
14 : 37 : 17	DATE/TIME READ

NOTE: If the Docking Time Auto Sync option is checked in Station Info, the option to manually set the Bump-Calibration Station time will not be available.

To manually set the Bump-Calibration Station time,

1. Update the date field to the desired time. Click **CURRENT TIME** to set the date field to the current computer time.
2. Click **DATE/TIME UPDATE**. The software will set the Bump-Calibration Station time to the time displayed in the date field.

6 AimSafety Product limited warranty

Macurco warrants the PM400 Bump/Cal Station gas detector will be free from defective materials and workmanship for a period of two (2) years from the date of manufacture (indicated on inside cover of the PM400 Bump/Cal Station), provided it is maintained and used in accordance with Macurco instructions and/or recommendations. If any component becomes defective during the warranty period, it will be replaced or repaired free of charge, if the unit is returned in accordance with the instructions below. This warranty does not apply to units that have been altered or had repair attempted, or that have been subjected to abuse, accidental or otherwise. The above warranty is in lieu of all other express warranties, obligations or liabilities. THE IMPLIED WARRANTIES OF MERCHANTABILITY AND FITNESS FOR PARTICULAR PURPOSE ARE LIMITED TO A PERIOD OF TWO (2) YEARS FROM THE PURCHASE DATE. Macurco shall not be liable for any incidental or consequential damages for breach of this or any other warranty, express or implied, arising out of or related to the use of said gas detector. The manufacturer or its agent's liability shall be limited to replacement or repair as set forth above. Buyer's sole and exclusive remedies are the return of the goods and repayment of the price, or repair and replacement of non-conforming goods or parts.

AimSafety by Macurco

3601 N. St. Paul Avenue
Sioux Falls, SD 57104

Technical Support Contact Information

Phone: 1-844-325-3050

Fax: 1-605-951-9616

Email: support@aimsafety.com

Website: www.support.aimsafety.com

General Contact Information

Phone : 1-877-367-7891

Fax : 1-605-951-9616

Email : info@aimsafety.com

Website: www.aimsafety.com

Rev - 1.0

Issue Date: 9-06-2019

Document No: 34-2900-0513-1

© Aerionics 2019. All rights reserved.

Macurco is a trademark of Aerionics, Inc.

