

# DF Air Source Treatment Unit

## Filter



### Symbol:

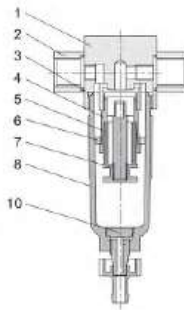


### Product feature:

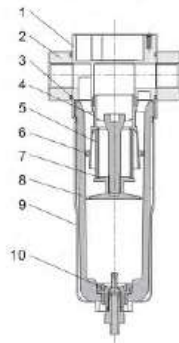
1. Special guide structure makes the flowing gases spin properly to separate the water from gas and filter solid particle efficiently.
2. Low pressure loss and high division efficiency.
3. Filter precision 5 or 40 μm is optional.
4. Manual, differential pressure and automatic drain ways are optional.

### Inner structure drawing:

DF100



DF200/400/600

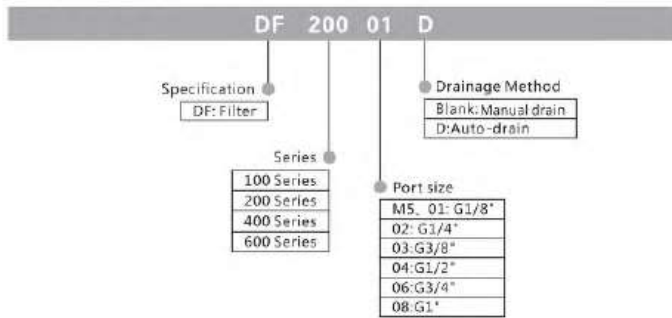


### Specification:

Type	DF100-M5, 01	DF200-01, 02, 03	DF400-01, 04, 06	DF600-06, 08
Port size(G)	M5·1/8"	1/8"·1/4"·3/8"	3/8"·1/2"·3/4"	3/4"·1"
Fluid	Compressed air			
Operating pressure range(MPa)	0.15~0.7		0.15~1.2	
Max. Flow rate(L/min)	500	2000	4000	11500
Ambient temperature(°C)	-10~60			
Filter precision	5μm or 40μm			
Cup material	Polycarbonate			
Guard cup	-	•	•	•



### How to order:



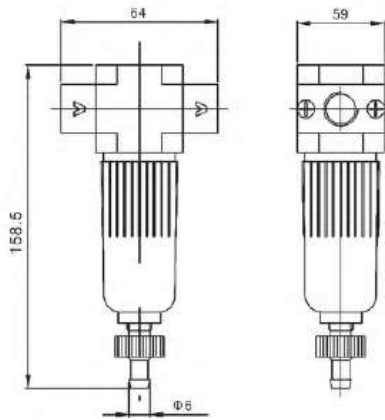
Number	Name	Material
1	Regulate body	Aluminium(DFR100)Zinc(Other)
2	Connecting block	Aluminium(DFR100)Zinc(Other)
3	O-ring	NBR
4	Filter case pedestal	POM
5	Filter core	Polypropylene fiber Bronze
6	Impeller	POM
7	Chemical-resistant plate	POM
8	Water cap	PC
9	Guard cup	Aluminium
10	Drain	POM

# DF Air Source Treatment Unit

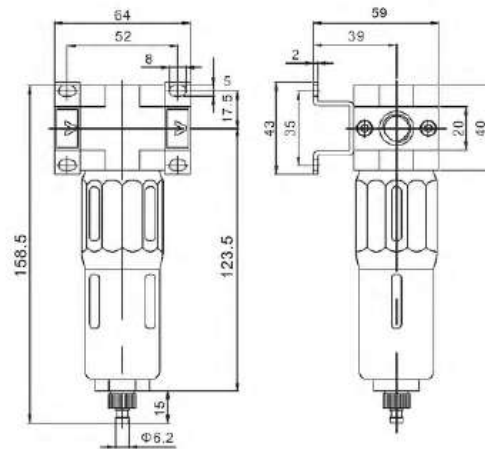
## Filter

### ■ Dimension(mm):

■ DF100-M5. 01

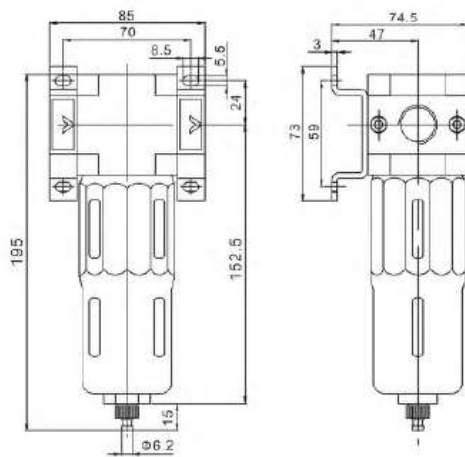


■ DF200-01, 02, 03

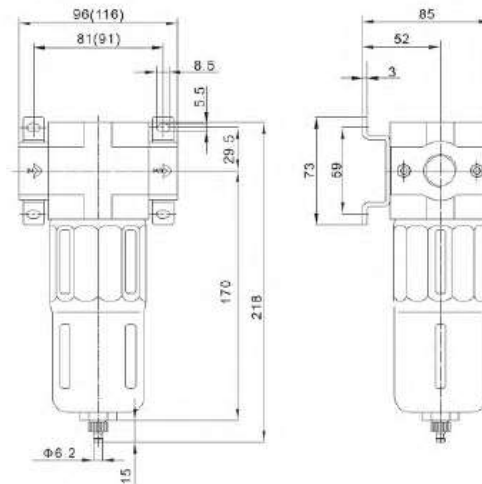


Note: The interface of M5 is without connecting block.

■ DF400-03, 04, 06



■ DF600-06, 08



DF