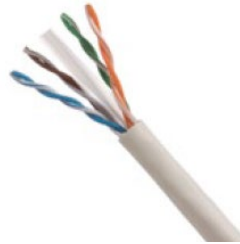


# TX6™ ER Category 6 U/UTP 22 AWG Copper Cable

## specifications

Category 6 cable shall meet ANSI/TIA-568.2-E Category 6 component Standard. The conductors shall be 22 AWG construction with PE insulation. The copper conductors shall be twisted in pairs, separated by a cross-divider, and covered by a flame retardant (CMR) jacket. Provides less voltage drop, increased current carrying capacity and reduced heat generation for PoE applications. The cable shall exceed the 100-meter distance for security, ICT, building automation, and IoT applications.



## technical information

<b>Part number</b>	PUR6C2204**-CE (** designates jacket color: BU = Blue, WH=White)
<b>Electrical performance:</b>	Certified channel performance in a 4-connector configuration up to 100 meters and meets ANSI/TIA-568.2-E Category 6 Standard at swept frequencies up to 250MHz Certified component performance up to 100 meters and meets the component requirements of ANSI/TIA-568.2-E Category 6 component Standard at swept frequencies up to 250 MHz
<b>Conductors/insulators:</b>	22 AWG solid copper insulated with polyethylene (PE)
<b>Insulation diameter:</b>	1.19 – 1.29mm (0.047 – 0.051 in.)
<b>Flame rating:</b>	UL 1666
<b>PoE compliant:</b>	Meets IEEE 802.3af, IEEE 802.3at and IEEE 802.3bt for PoE applications
<b>Installation tension:</b>	110 N (25 lbf)
<b>Temperature rating:</b>	0°C to 50°C (32°F to 122°F) during installation -20°C to 75°C (-4°F to 167°F) during operation
<b>Cable jacket:</b>	Riser (CMR)
<b>Cable diameter:</b>	7.3 mm (0.287 in.) nominal
<b>Cable weight:</b>	18 kg/305m (38 lbs./1000 ft.)
<b>Packaging:</b>	305m (1000 ft) in an easy payout carton Package tested to ISTA Procedure 1A

## key features and benefits

<b>Longer runs for labor and material savings:</b>	Provides power and bandwidth at extended distances of 150 meters based on the IEEE 802.3 application standards. Maximum distance is subject to change based on manufacturers' equipment and varying environmental conditions.
<b>High powered applications:</b>	Larger AWG conductors for higher power applications (reduced heat generation, higher maximum current carrying capabilities, improved attenuation).
<b>Extended temperature range:</b>	Allows operation in 75°C (167°F) ambient environment providing error-free performance in high-density cabinets and large cable bundles running PoE+ or PoE++ applications

## applications

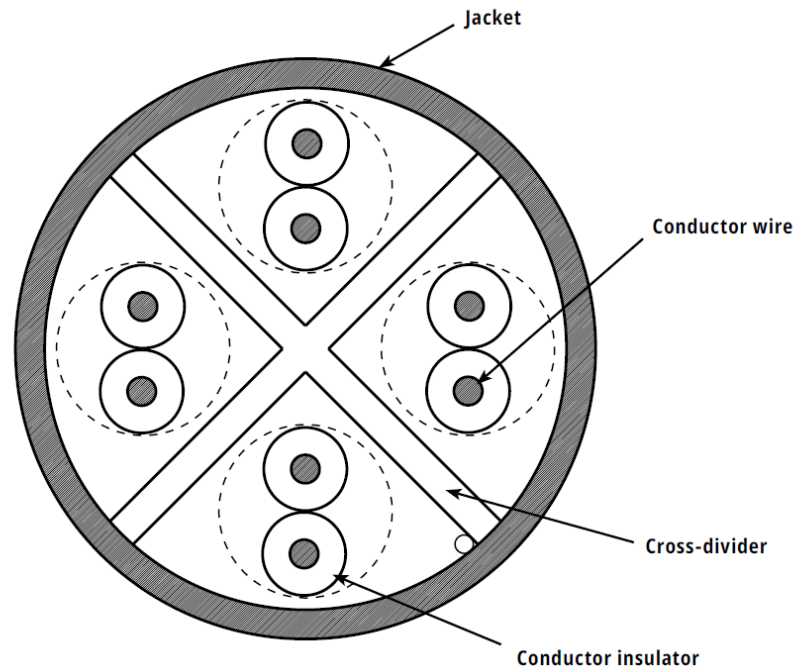
Interoperable and backward compatible, the TX6 U/UTP Cabling System provides design flexibility to protect network investments well into the future. With certified performance to the ANSI/TIA-568-2.E Category 6 Standards for a 100 meter channel, this system will support the following applications:

- Ethernet 10BASE-T, 100BASE-T (Fast Ethernet), 1000BASE-T (Gigabit Ethernet)
- 155 Mb/s ATM, 622 Mb/s ATM, 1.2 Gb/s ATM
- Token Ring 4/16

# TK6™ ER Category 6 U/UTP 22 AWG Copper Cable

Mechanical Test	
Ultimate Breaking Strength	>400 N (90 lbf)
Minimum Bend Radius	8 x Cable Diameter
Electrical Test	
Nominal Velocity of Propagation (NVP)	67% nominal
Operating Voltage, maximum	80V

## ENGINEERING DRAWING



### WORLDWIDE SUBSIDIARIES AND SALES OFFICES

PANDUIT CANADA  
Markham, Ontario  
cs-cdn@panduit.com  
Phone: 800.777.3300

PANDUIT EUROPE LTD.  
London, UK  
cs-emea@panduit.com  
Phone: 44.20.8601.7200

PANDUIT SINGAPORE PTE. LTD.  
Republic of Singapore  
cs-ap@panduit.com  
Phone: 65.6305.7575

PANDUIT JAPAN  
Tokyo, Japan  
cs-japan@panduit.com  
Phone: 81.3.6863.6000

PANDUIT LATIN AMERICA  
Guadalajara, Mexico  
cs-la@panduit.com  
Phone: 52.33.3777.6000

PANDUIT AUSTRALIA PTY. LTD.  
Victoria, Australia  
cs-aus@panduit.com  
Phone: 61.3.9794.9020

For a copy of Panduit product warranties, log on to [www.panduit.com/warranty](http://www.panduit.com/warranty)

For more information

Visit us at [www.panduit.com](http://www.panduit.com)

Contact Customer Service by email: [cs@panduit.com](mailto:cs@panduit.com)  
or by phone: 800-777-3300

# PANDUIT®