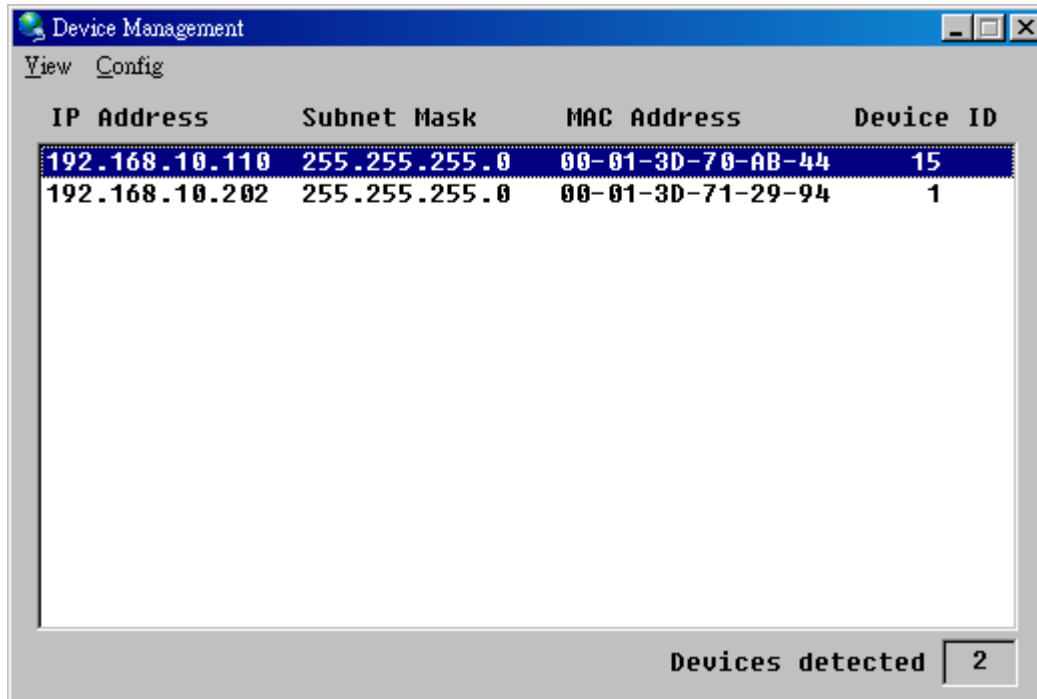


TCP/IP Converter Setting

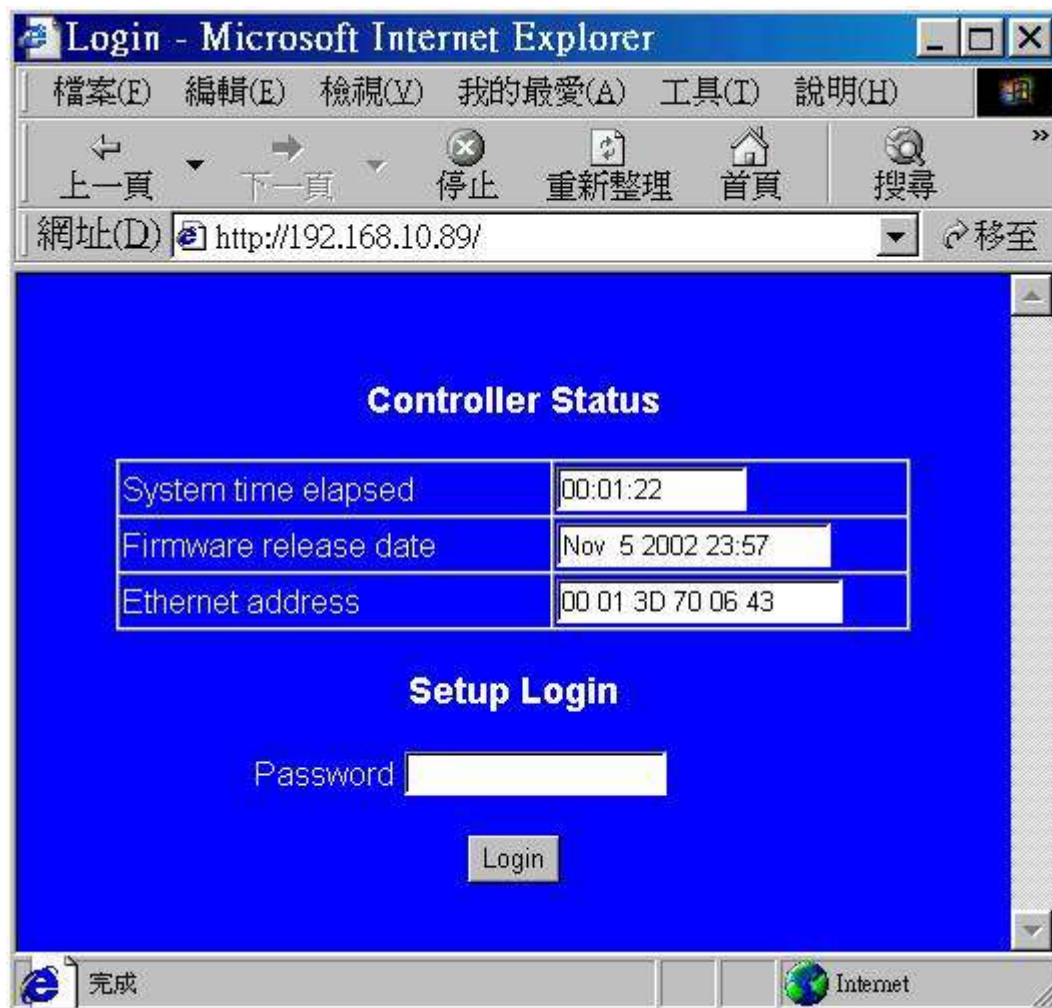
1.First, run the enclosed disk which contained **DEM.EXE** to search for its TCP/IP converter from LAN. We strongly recommend to set only one TCP/IP converter at a time. If there is more than one TCP/IP converter in LAN, please unplug the other converters.



- Converter setting can be done with a sole computer (with a Hub) when there are many TCP/IP converters to be set before installing to other places.
- Any setting of TCP/IP converter shall be done by Professional Internet Engineer.

2.Click **Config -> IP Address** to set as the same IP group of LAN. For example, if the IP of computer is 192.168.10.88, please set the TCP/IP converter's IP to 192.168.10.89. Do not use the same IP. After then, use Ping command under MS-DOS format to test the setting of the new IP. Fro example, setting of the new IP(C:\> ping 192.168.10.89) is completed when there is no error message of Request timed out appeared.

3.Type the new IP in any browser.



4. Click **Login** to enter as there is no default password.
5. Follow below to complete the remaining settings.

Controller Setup

IP address	192.168.10.89	1
Subnet mask	255.255.0.0	2
Gateway address	0.0.0.0	
DHCP client	Disable	
Socket port of HTTP setup	80	
Socket port of serial I/O	4444	3
Socket port of digital I/O	4444	
Client mode server IP address	192.168.10.88	4
Client mode server socket port	4444	
Serial I/O settings (baud rate, parity, data bits, stop bits)	9600 N 8 2	5
Interface of serial I/O	RS 485 (Half Duplex)	6
Packet mode of serial input	Disable	
Packet mode inter-packet timeout	10 ms	
Device ID	1	
Report device ID when connected	Disable	
Setup password		7
Access password		

Update

Red area is set variably according to Internet conditions.

1.IP address of TCP/IP converter.

2.Depending on TCP/IP converter's location, use default value for both Subnet mask and Gateway address.

3.The value of TCP/IP converter's socket port shall be between 1024 ~ 65535 Setting of communication mode depending on software's communication interface setting.

- Please set **UDP Client** if the software's communication interface mode is **TCP/IP (UDP)**.
- Please set **TCP Server** if the software's communication interface mode is **TCP/IP (TCP)**.

4.We recommend Client mode server IP address shall be the same as TCP/IP converter's IP address.

5.TCP/IP converter serial I/O parameter setting:

- ST-680: 9600,N,8,2
- ST-3000: 9600,N,8,1
- ST-6000: 9600,N,8,1
- SF-1000: 9600,N,8,1
- ST-500A: 9600,N,8,1

6.serial I/O setting for TCP/IP converter:

- Please select **RS 232** for **RS 232** Communication Interface.
- Please select **RS 485 (Half Duplex)** for **RS 485** Communication Interface.

7.Setup and access password for TCP/IP converter.