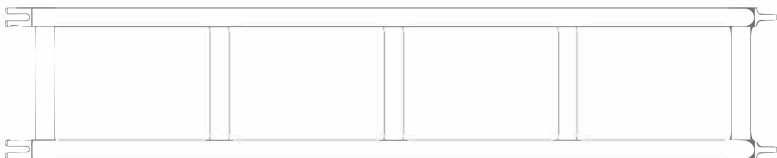
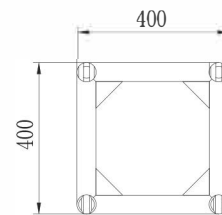
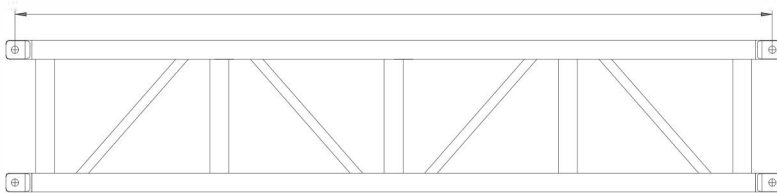
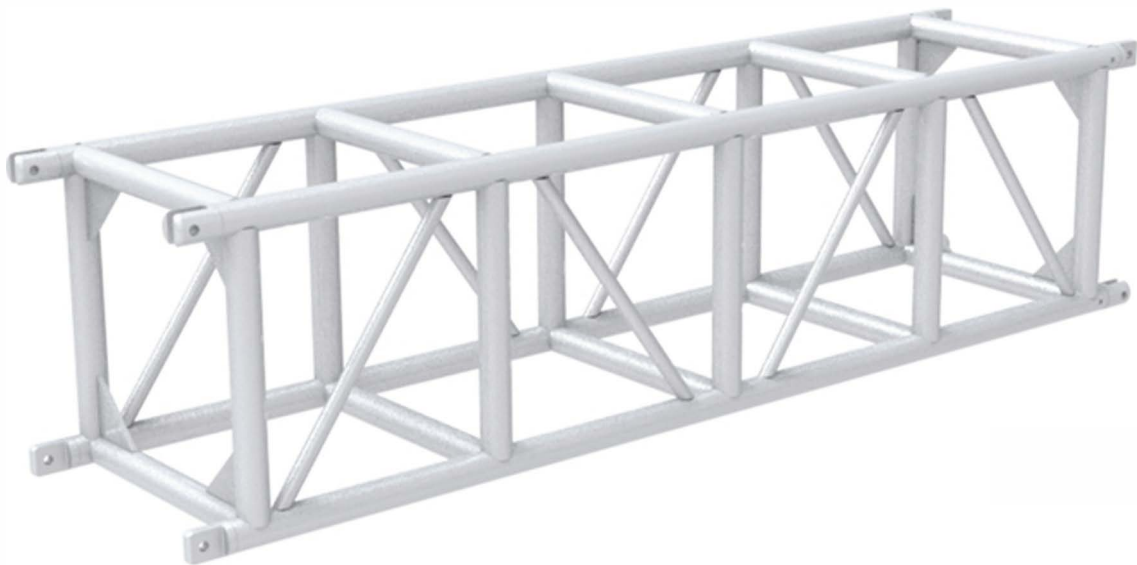


# EPYT40S/400x400mm



Especificación	
Material	6082-T6
Tubo principal	Φ50*3mm
Tubo secundario	Φ50*2mm
Tubo diagonal	Φ25*2mm
Peso	~11kg/m

1 inch=25,4mm | 1m=3.28ft | 1 lbs=0,453kg

EPYT40S (tabla de carga)	Span(m)	4m	6m	8m	10m	12m	14m	16m
UDL	(kg)	688	253	143	77	55	41	22
DEFLECCIÓN	(mm)	22	70	98	131	171	218	294
CPL	(kg)	1528	843	636	428	367	317	196
DEFLECCIÓN	(mm)	26	74	101	132	169	216	289

1 inch=25,4mm | 1m=3.28ft | 1 lbs=0,453kg

UDL: Carga uniformemente distribuida

CPL: Carga puntual al centro